



Computer Enhanced Image

## 269 Victoria Street DARLINGHURST, NSW

1 bed | 1 bath

First time offered in over 50 years, affordable price range.  
 An excellent work/home property or solid inner city investment  
 Excellent exposure, Hi-visibility location with busy pedestrian traffic

Features include:

- . Zoned Mixed residential / commercial usage
- . Pedestrian rear lane access from Hayden Place
- . Land size 74sqm with a 5metre frontage
- . Ground floor is a fully operational cafe/take-away shop

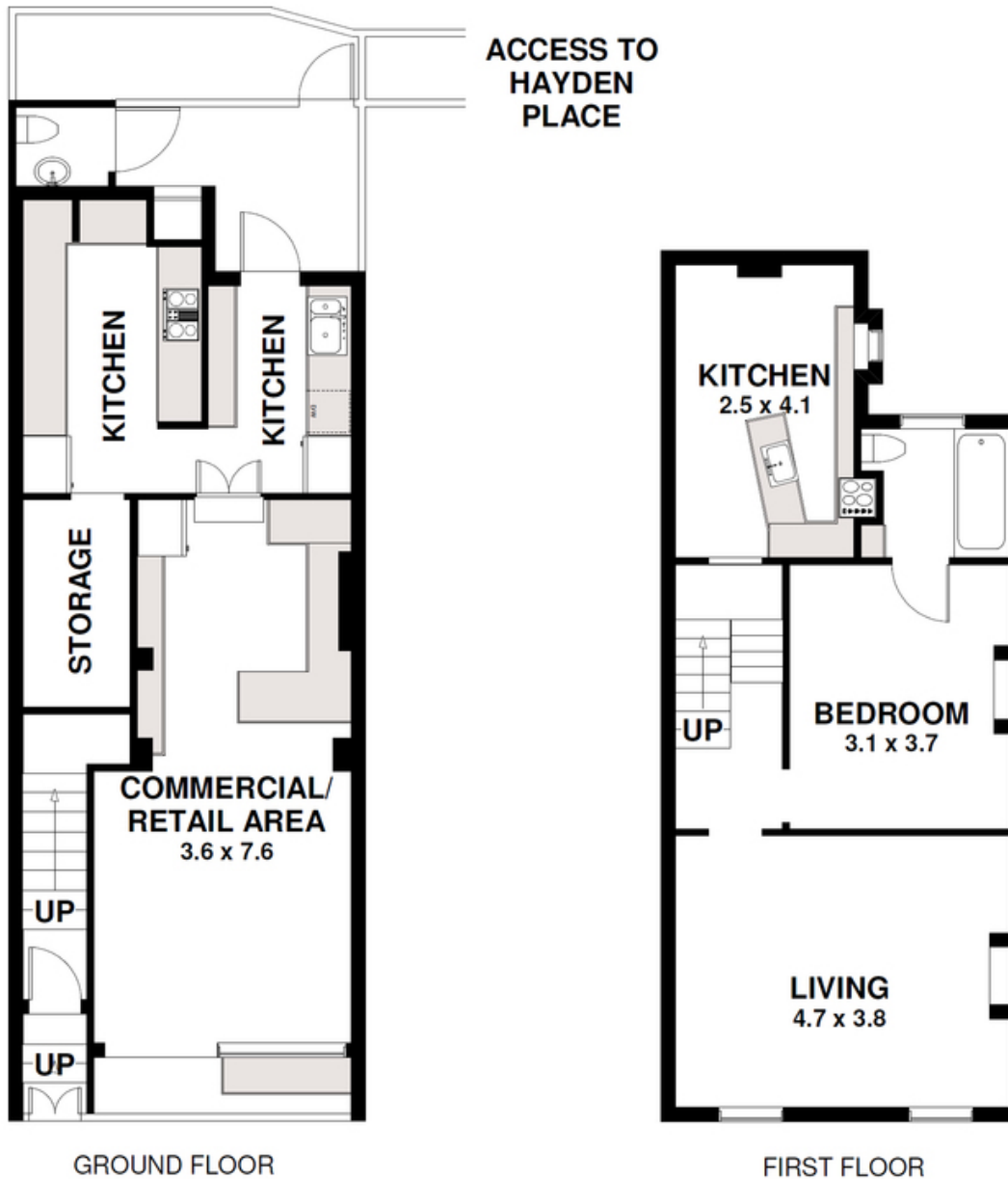


[rwebay.com.au/1707305](http://rwebay.com.au/1707305)

Rod Angus 0419 599 888

**Proudly Richardson & Wrench**

Richardson & Wrench Elizabeth Bay / Potts Point  
 02 8356 2700



## 269 Victoria Street, Darlinghurst

**DISCLAIMER CLAUSE** The information contained in this brochure has been furnished to us by the vendors. The plan is provided as a guide only. While we trust it to be correct, we cannot guarantee its accuracy. Sizes and areas indicated are approximate only. We have not verified whether or not that information is accurate and do not have any belief one way or another in its accuracy. We do not accept any responsibility to any person for its accuracy and do no more than pass it on. All interested parties should make and rely on their own enquiries in order to determine whether or not this information is in fact accurate.