



## 20/40a - 42 Macleay Street POTTS POINT, NSW

3 bed | 2 bath | 1 car

# R&W

- \* Buy into exclusivity, privacy and security amidst superbly maintained gardens
- \* Just one easy flight up, impressive security lobby
- \* Large open plan living/dining room, mirrored foyer
- \* Balcony style spacious adjoining sunroom/study
- \* 3 generous bedrooms, 2 with built-ins & bay windows
- \* 2 smart modern fully-tiled bathrooms (one is ensuite)
- \* Marble spacious modern kitchen with gas hob, oven, dishwasher, concealed fridge, ample storage
- \* This grand apartment offers readymade style with scop...

[rwebay.com.au/1712976](http://rwebay.com.au/1712976)

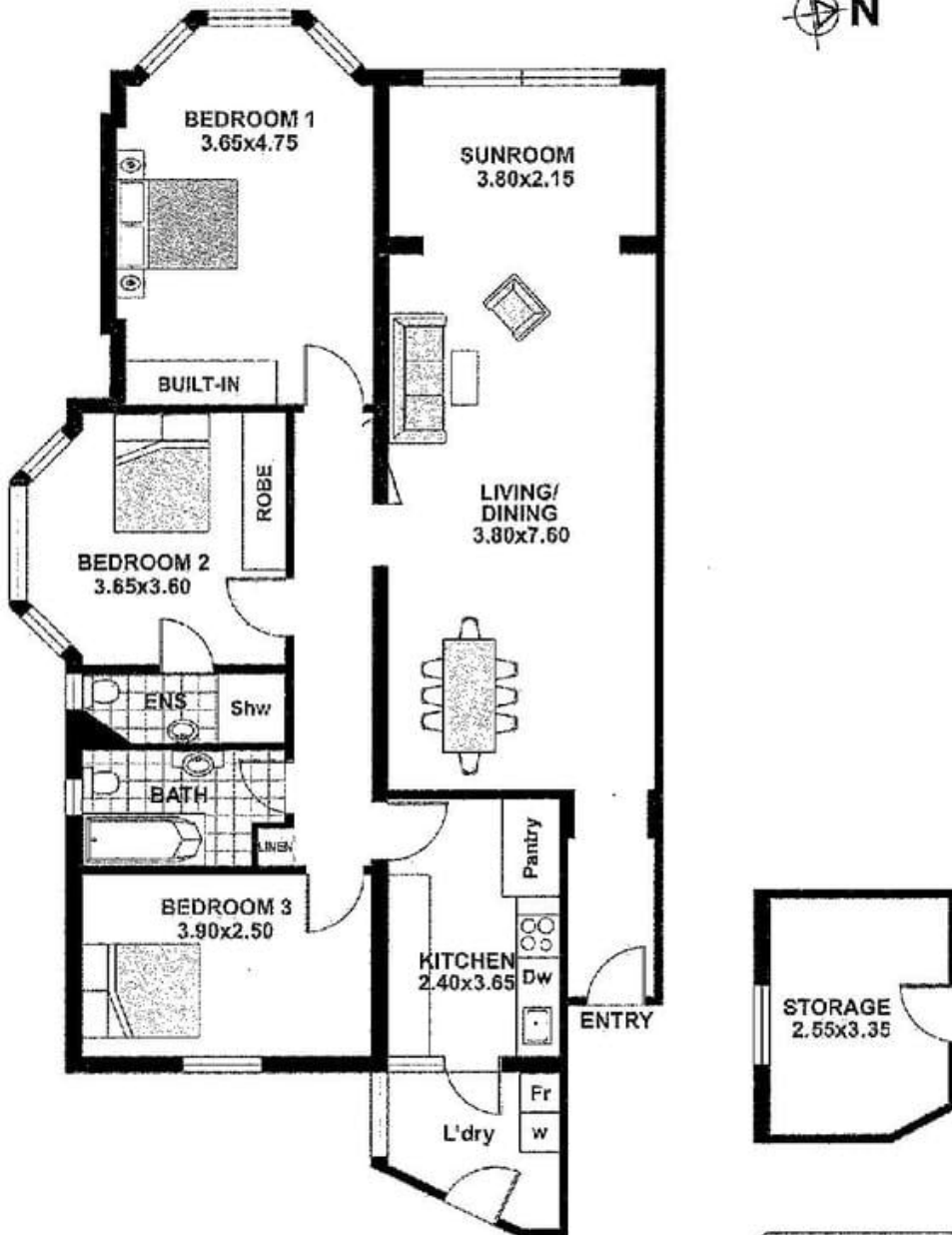
Jason Boon 0418 671 494

Geoff Cox 0418 231 004

**Proudly Richardson&Wrench**

Richardson & Wrench Elizabeth Bay / Potts Point  
02 8356 2700

**20/40a MACLEAY ST  
POTTS POINT**



Dw	Dishwasher
Fr	Refrigerator
L'dry	Laundry
w	Washing machine

*DISCLAIMER CLAUSE The information contained in this brochure has been furnished to us by the vendors. The plan is provided as a guide only. While we trust it to be correct, we cannot guarantee its accuracy. Sizes and areas indicated are approximate only. We have not verified whether or not that information is accurate and do not have any belief one way or another in its accuracy. We do not accept any responsibility to any person for its accuracy and do no more than pass it on. All interested parties should make and rely on their own enquires in order to determine whether or not this information is in fact accurate.*