



10/95 Palmer Street WOOLLOOMOOLOO, NSW

2 bed | 1 bath

R&W

- * Secure access via sunny large central landscaped courtyard
- * Generous open plan living/dining areas, designer fireplace
- * Stacking glass doors open to northerly private decked garden with built-in bbq, integrated dog kennel, plus a wall-mounted vertical garden system growing lush herbs and veges
- * CaesarStone open plan kitchen, ceramic hob/stove, integrated fridge, dishwasher, ample storage
- * 2 double bedrooms, both with extensive built-in storage
- * Stylish bathroom with deep bath and high quality fittings

rwebay.com.au/1734879

Geoff Cox 0418 231 004

Jason Boon 0418 671 494

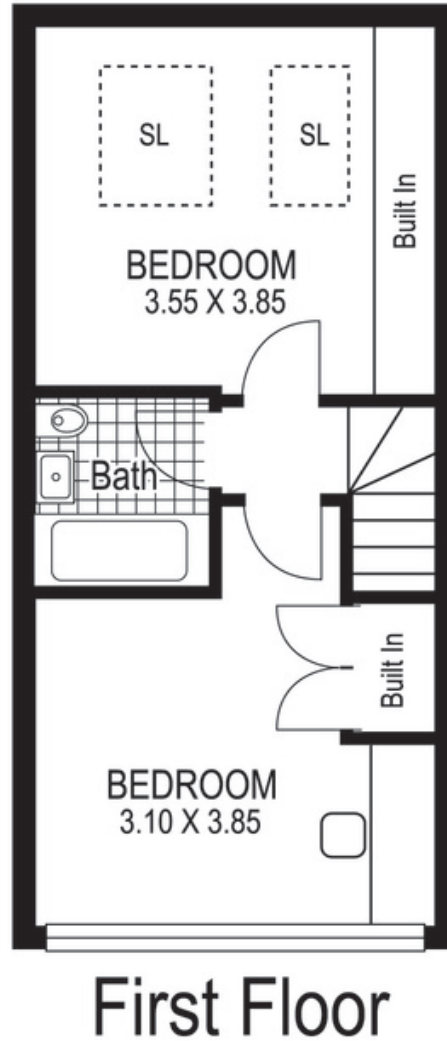
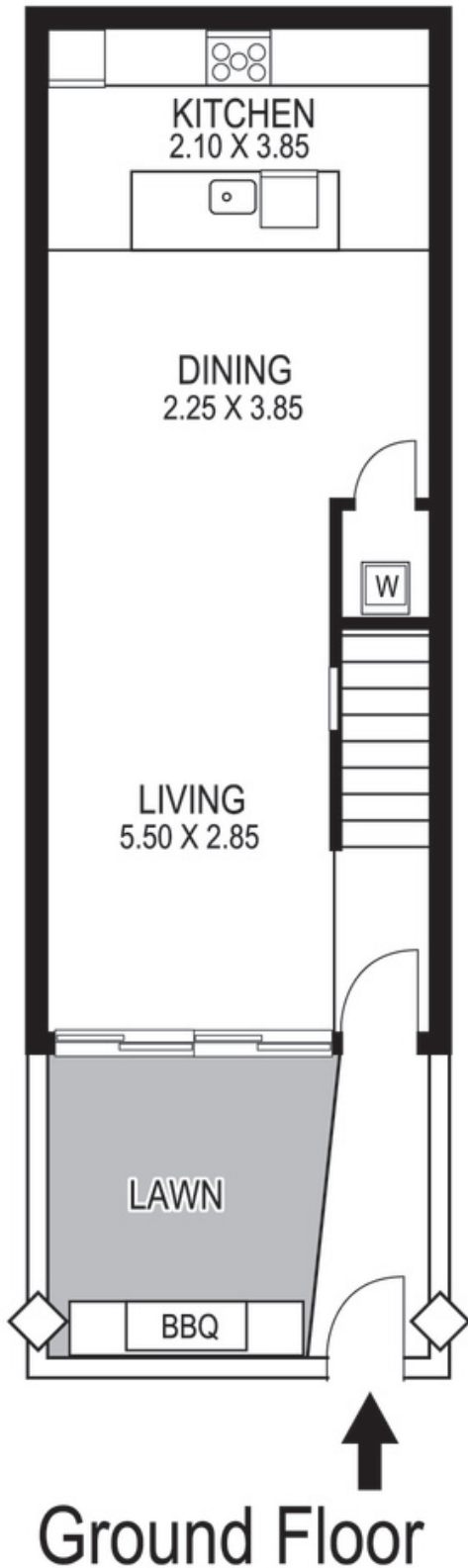
Proudly Richardson&Wrench

Richardson & Wrench Elizabeth Bay / Potts Point
02 8356 2700

Contact:
Jason Boon
0418 671 494

Contact:
Geoff Cox
0418 231 004

R&W | The best reputation
in real estate
Elizabeth Bay/Potts Point



Plans shown are for presentation purposes only and are not part of any legal document or title and are subject to errors, omissions, inaccuracies and they should not be used as sole and/or accurate reference for purchasing decision. Interested parties should make their own enquiries using other sources supplied. Dimensions shown on the plans are approximate values in length by width. Illustration by Raoul Isidro 04111 28500.

10 / 95 Palmer Street WOOLLOOMOOLOO

Every precaution has been taken to establish accuracy of the information in this brochure but does not constitute any representation by the vendor or agent.

R&W