



## 13/227 Crown Street DARLINGHURST, NSW

1 bed | 1 bath

Combining its Art Deco origins with modern style and sophistication, this spacious one bedroom home was completely reinvented for stunning yet still practical living. Unique in its layout and luxurious in all aspects this perfectly proportioned apartment with study alcove is quietly positioned in **ROYAL COURT**, a superbly maintained strata title secure building with entertaining rooftop comprising city/harbour views.

Large open plan living/dining with timber floors an...

# R&W

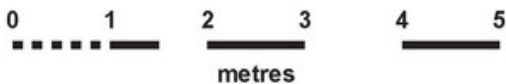
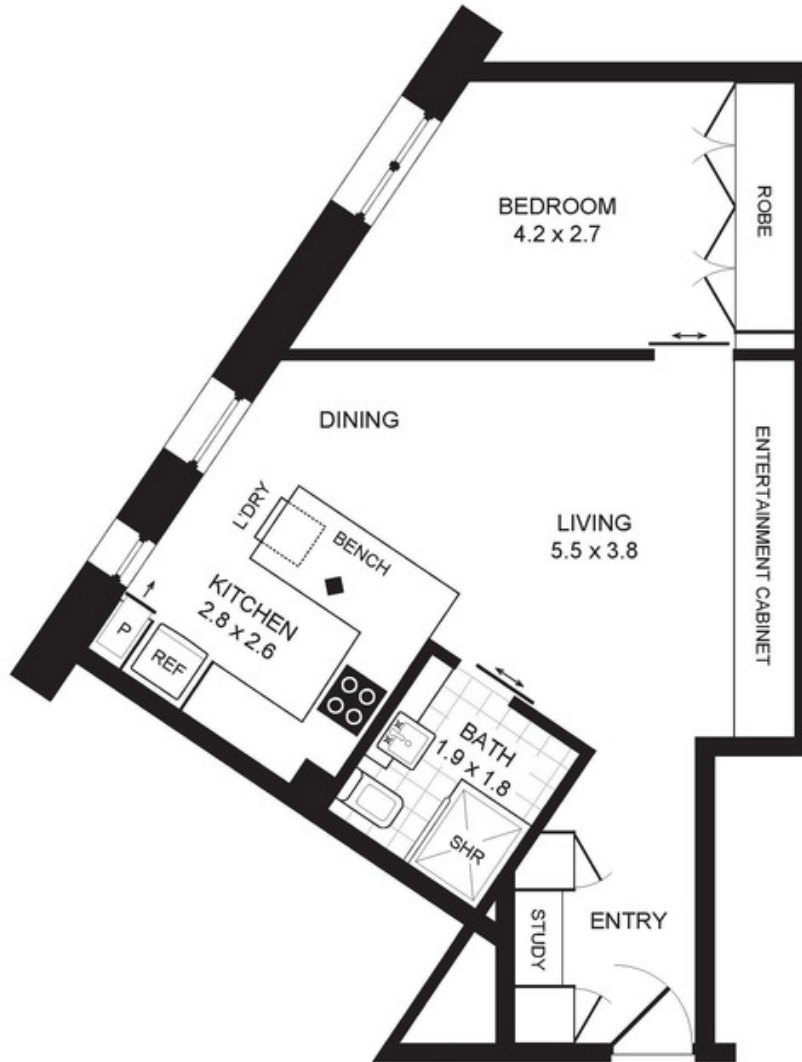
[rwebay.com.au/1741682](http://rwebay.com.au/1741682)

R&W Elizabeth Bay Potts Point

**Proudly Richardson&Wrench**

Richardson & Wrench Elizabeth Bay / Potts Point  
02 8356 2700

APARTMENT 13/227 CROWN STREET  
DARLINGHURST



**PROMOPLANS ...adding REAL value!**

E&OE This plan is for illustrative purposes only and dimensions are approximate. It does not constitute part of any legal document or commercial contract for the sale or lease of this property.

**COPYRIGHT © 2014 PROMOPLANS 02 9572 7111**

**Warning: Usage restricted under the Copyright Act**

**CONTACT:**

John Hoggett  
Phone 8356 2700 Mobile 0431 411 004  
Email [jhoggett@rwebay.com.au](mailto:jhoggett@rwebay.com.au)

**R&W**

**Elizabeth Bay | Potts Point  
8356 2700**