



9/20 Macleay Street POTTS POINT, NSW

1 bed | 1 bath

With an oversized well proportioned layout this affordable gem will excite buyers seeking huge potential with the ability to create your own personal haven . The first time offered in almost 30 years and quietly set well back from the buzzing lifestyle in the heart of Potts Point, this is an opportunity to transform this home into something special with simple cosmetic improvements.

Retaining original features including stunning art deco...

R&W

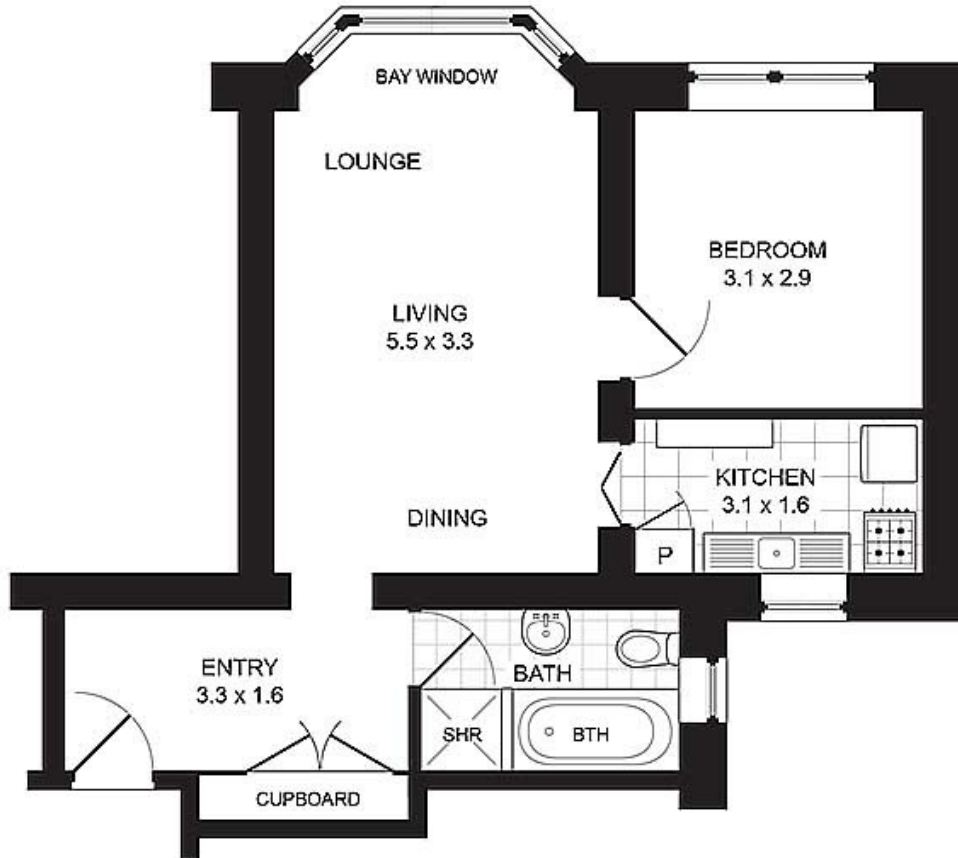
rwebay.com.au/1758865

R&W Elizabeth Bay Potts Point

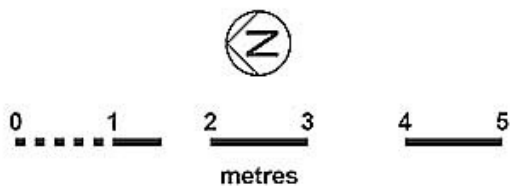
Proudly Richardson&Wrench

Richardson & Wrench Elizabeth Bay / Potts Point
02 8356 2700

APARTMENT 9/20 MACLEAY STREET
POTTS POINT



FLOOR PLAN



CONTACT: _____
John Hoggatt
Phone 8356 2700 Mobile 0431 411 004

PROMOPLANS ...adding REAL value!
E&OE This plan is for illustrative purposes only and dimensions are approximate. It does not constitute part of any legal document or commercial contract for the sale or lease of this property.
COPYRIGHT © 2014 PROMOPLANS 02 9572 7111
Warning: Usage restricted under the Copyright Act

R&W
Elizabeth Bay | Potts Point
8356 2700

Every precaution has been taken to establish accuracy of the information in this brochure but does not constitute any representation by the vendor or agent.

