



516/81 Macleay Street POTTS POINT, NSW

1 bed | 1 bath | 1 car

R&W

Enjoying treetop outlooks and plenty of north-easterly sunlight, this spacious modern 2-level apartment is an excellent first home or investment. Creatively designed for a lockup-and-go city lifestyle, the open plan layout is smartly presented for pet-friendly designer living in the exclusive Ikon. Quiet and privately positioned in what is known as one of Mirvac's most successful contemporary landmark security blocks, the layout is bright, airy and New York inspired. Ideal for downsizers, young professionals and long-time investors, this low maintenance apartment offers exceptional value along with supreme convenience in the very heart of fashionable Potts Point.

rwebay.com.au/1800397

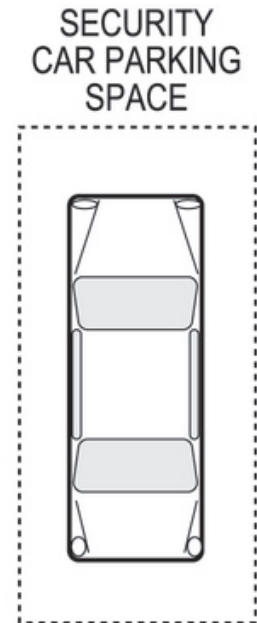
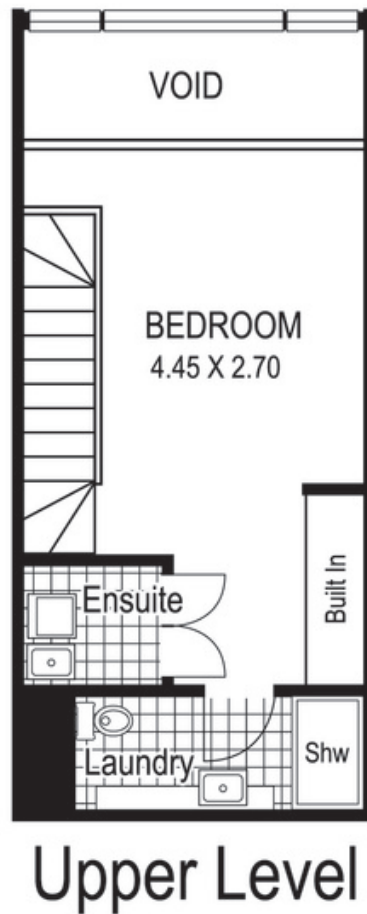
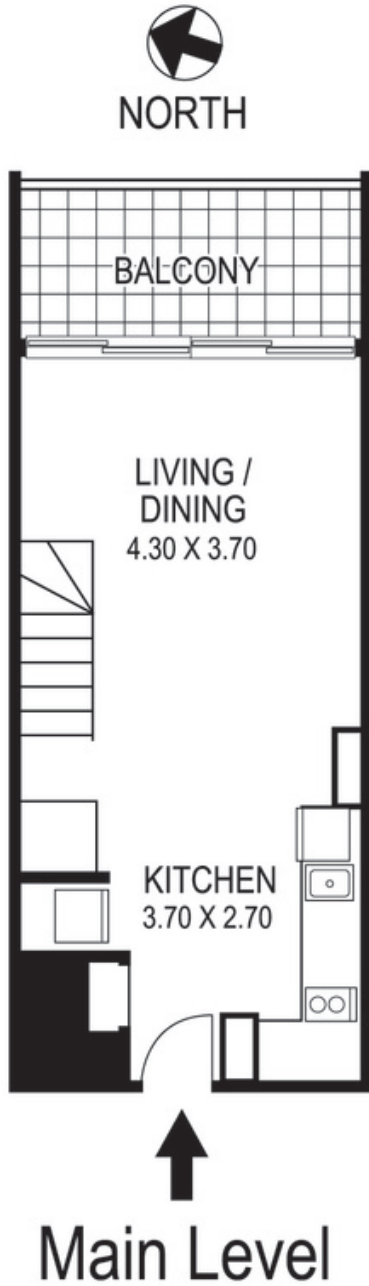
Jason Boon 0418 671 494

Geoff Cox 0418 231 004

Proudly Richardson&Wrench

Richardson & Wrench Elizabeth Bay / Potts Point
02 8356 2700

Contact:
Jason Boon
0418 671 494



516 / 81 Macleay Street
POTTS POINT
"IKON"

Plans shown are for presentation purposes only and are not part of any legal document or title and are subject to errors, omissions, inaccuracies and they should not be used as sole and/or accurate reference for purchasing decision. Interested parties should make their own enquiries using other sources supplied. Dimensions shown on the plans are approximate values in length by width. Illustration by Raoul Isidro 04111 28500.

Every precaution has been taken to establish accuracy of the information in this brochure but does not constitute any representation by the vendor or agent.