



## 10/265 Palmer Street DARLINGHURST, NSW

2 bed | 1 bath



A great opportunity presents itself in the form of this special offering in the heart of Darlinghurst.

Apartment 10 is located on the second floor of this boutique walk-up security building and brings with it the potential to renovate, redecorate, move in yourself or put a tenant in; options galore!

Features include reverse cycle air conditioning, a modern kitchen and bathroom, and a short walk to Oxford St and all that that encompasses, plus it???'s just moments to the CBD.

This apartment feels like a terrace house inside and offers a true inner city living experience.

...

[rwebay.com.au/1853652](http://rwebay.com.au/1853652)

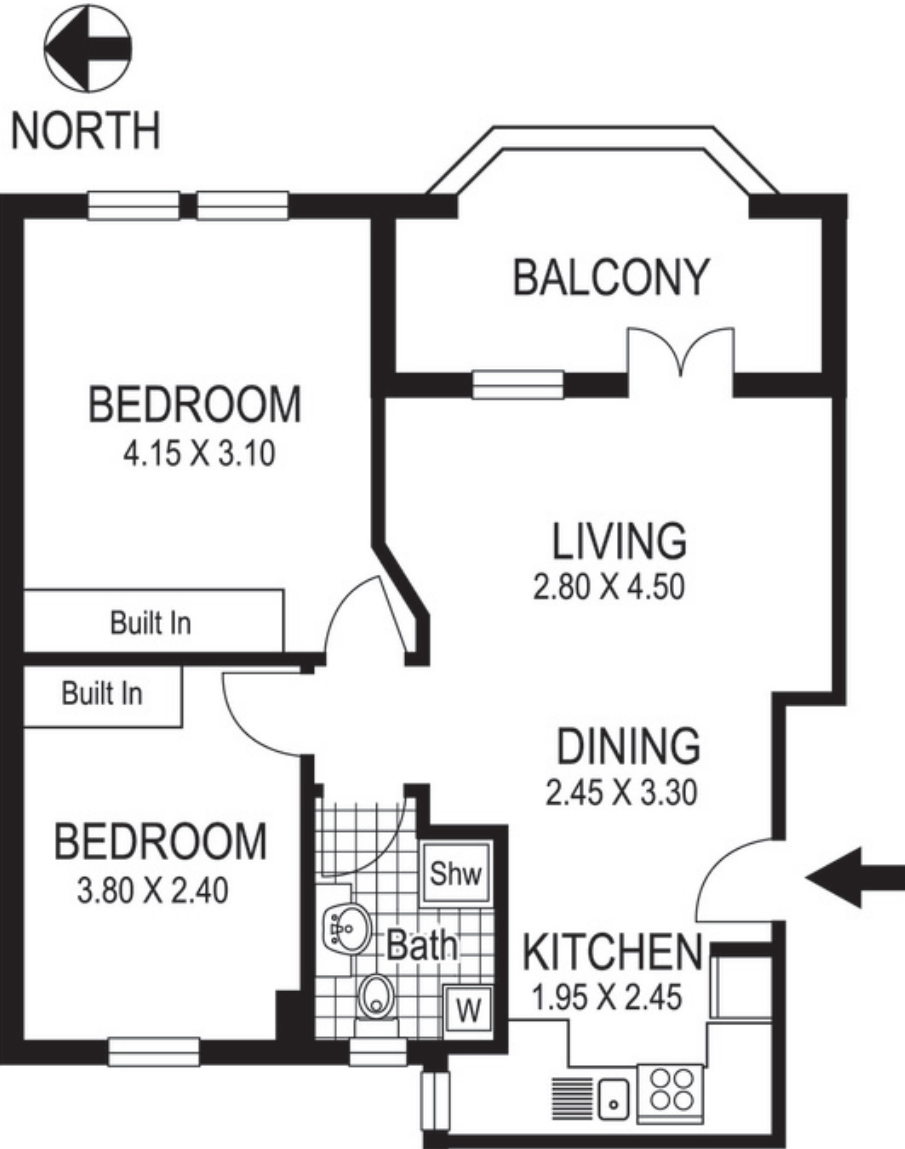
R&W Elizabeth Bay Potts Point

**Proudly Richardson&Wrench**

Richardson & Wrench Elizabeth Bay / Potts Point  
02 8356 2700

Contact:  
Nicholas Tsaoucis  
0419 777 717

**R&W** | The best reputation  
in real estate  
Elizabeth Bay/Potts Point



10 / 265 Palmer Street  
DARLINGHURST  
*"RIVERINA FLATS"*

Plans shown are for presentation purposes only and are not part of any legal document or title and are subject to errors, omissions, inaccuracies and they should not be used as sole and/or accurate reference for purchasing decision. Interested parties should make their own enquiries using other sources supplied. Dimensions shown on the plans are approximate values in length by width. Illustration by Raoul Isidro 04111 28500.

Every precaution has been taken to establish accuracy of the information in this brochure but does not constitute any representation by the vendor or agent.

**R&W**