



## 1209/227 Victoria Street DARLINGHURST, NSW

2 bed | 2 bath | 1 car

**R&W**

- \* Secure lift access, secure parking + storage, elegant lobby with 24-hour concierge
- \* Flexible floorplan with central foyer and views on offer as soon as front door opens
- \* A full-length view-terrace opens from 2 double bedrooms, both with walk-in robes
- \* Designer powder room, 2 additional glass mosaic bathrooms, master with ensuite
- \* Versatile separate study/media room/3rd double bedroom with built-ins, slide-in wall
- \* 2nd full-length alfresco view-terrace extends out fro...

[rwebay.com.au/1883135](http://rwebay.com.au/1883135)

Geoff Cox 0418 231 004

Jason Boon 0418 671 494

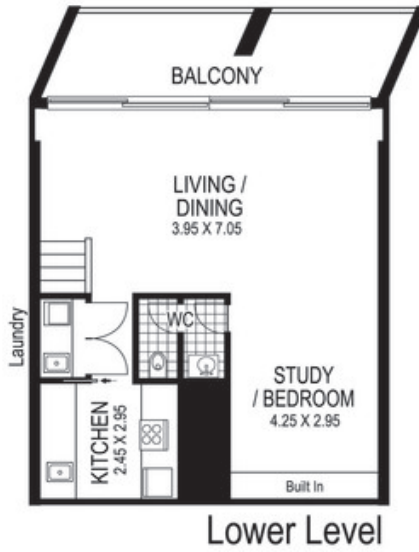
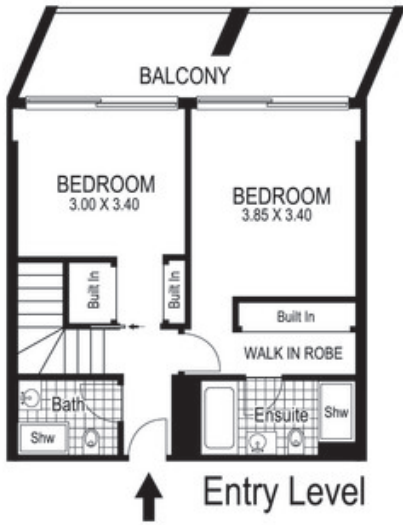
**Proudly Richardson&Wrench**

Richardson & Wrench Elizabeth Bay / Potts Point  
02 8356 2700

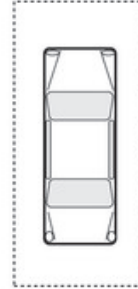
Contact:  
Jason Boon  
0418 671 494

Contact:  
Geoff Cox  
0418 231 004

**R&W** The best reputation  
in real estate  
Elizabeth Bay/Potts Point



SECURITY  
CAR PARKING  
SPACE



1209 / 227 Victoria Street DARLINGHURST  
*"TOP OF THE TOWN"*

Plans shown are for presentation purposes only and are not part of any legal document or title and are subject to errors, omissions, inaccuracies and they should not be used as sole and/or accurate reference for purchasing decision. Interested parties should make their own enquiries using other sources supplied. Dimensions shown on the plans are approximate values in length by width. Illustration by Raoul Isidro 04111 28500.