



320/50 Macleay Street POTTS POINT, NSW

1 bed | 1 bath | 1 car

R&W

Offering the ideal mix of modern practicality with style and sophistication, this cleverly designed home was reinvented for stunning contemporary living. Spacious in its layout and luxurious in all aspects, this perfectly proportioned apartment is perfect for discerning home-buyers or savvy investors.

- * Spacious living and dining featuring floor to ceiling smoked mirror wall and plush carpets throughout
- * Full width Juliet style balcony with tree lined outlook and city skylines cameos in winter
- * Galley kitchen with Calcutta marble bench tops, dish...

rwebay.com.au/1893379

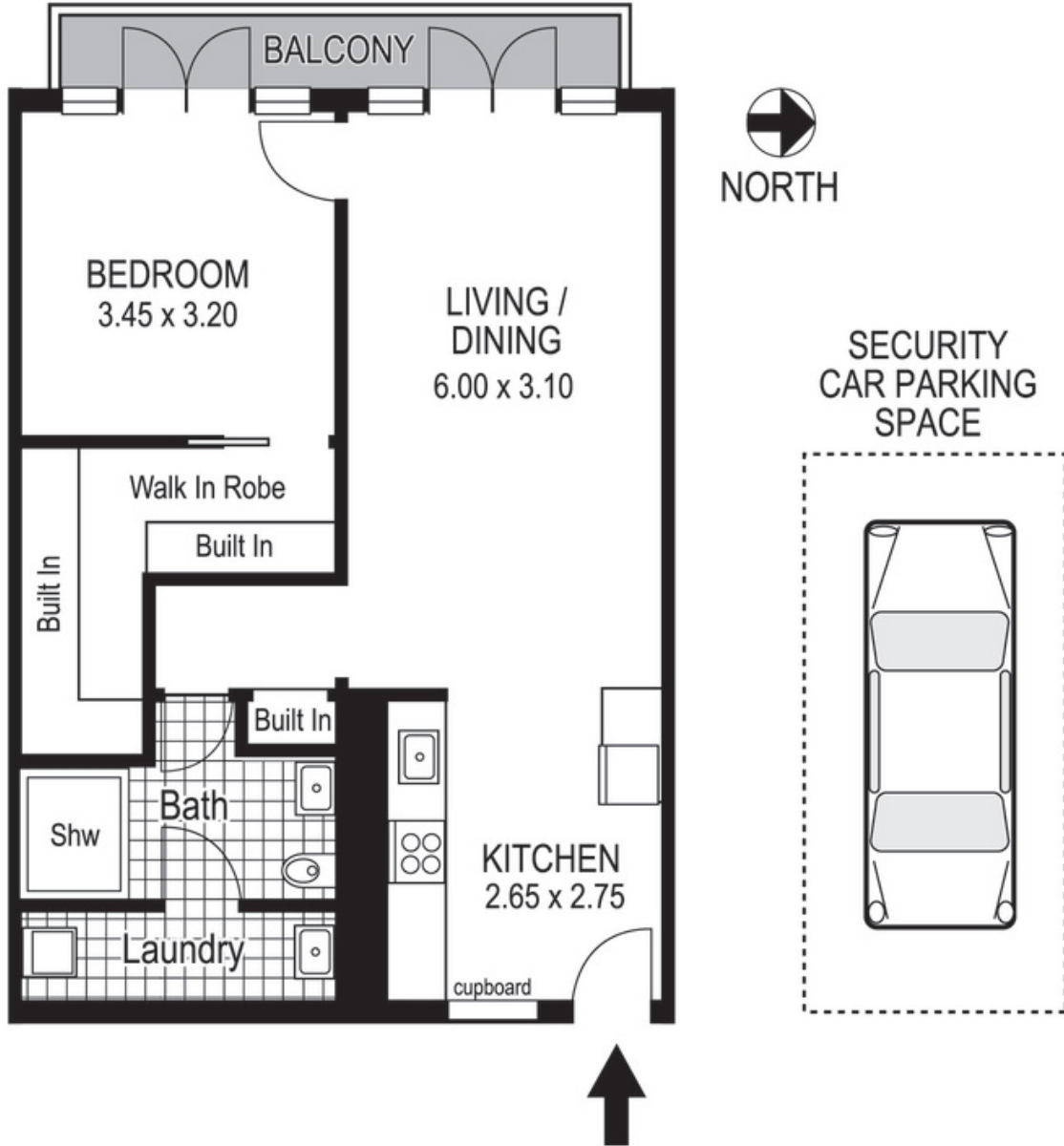
R&W Elizabeth Bay Potts Point

Proudly Richardson&Wrench

Richardson & Wrench Elizabeth Bay / Potts Point
02 8356 2700

Contact:
John Hogett
0431 411 004

R&W | The best reputation
in real estate
Elizabeth Bay/Potts Point



320 / 50 Macleay Street
POTTS POINT
"THE REX"

Plans shown are for presentation purposes only and are not part of any legal document or title and are subject to errors, omissions, inaccuracies and they should not be used as sole and/or accurate reference for purchasing decision. Interested parties should make their own enquiries using other sources supplied. Dimensions shown on the plans are approximate values in length by width. Illustration by Raoul Isidro 04111 28500.

Every precaution has been taken to establish accuracy of the information in this brochure but does not constitute any representation by the vendor or agent.

R&W