



## 26/76 Elizabeth Bay Road ELIZABETH BAY, NSW

1 bed | 1 bath

# R&W

- \* North/East aspect ensures airy sunlit layout
- \* Open plan living/dining with built-in storage
- \* Designated adjoining open bedroom alcove
- \* Chic contemporary fully tiled bathroom
- \* Separate sleek contemporary kitchen with ceramic hob
- \* High ceilings, modern timber floor, only 1 common wall
- \* Quiet and private with leafy district outlooks
- \* Easy access to sunny shared rooftop terrace with laundry facilities

[rwebay.com.au/1955089](http://rwebay.com.au/1955089)

Luke McDonnell 0418 844 110

Angelo Bouras 0401 658 653

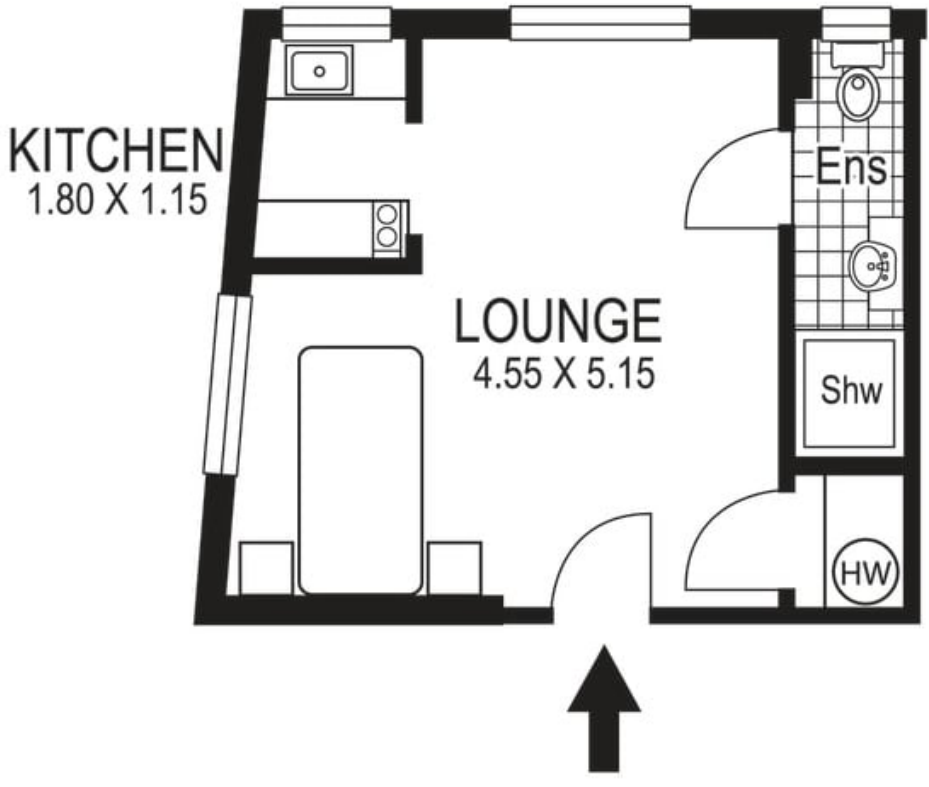
**Proudly Richardson&Wrench**

Richardson & Wrench Elizabeth Bay / Potts Point  
02 8356 2700

**R&W** | The best reputation  
in real estate  
Elizabeth Bay/Potts Point

Contact:  
Luke McDonnell  
0418 844 110

Contact:  
Angelo Bouras  
0401 658 653



26 / 76 Elizabeth Bay Road  
ELIZABETH BAY

Plans shown are for presentation purposes only and are not part of any legal document or title and are subject to errors, omissions, inaccuracies and they should not be used as sole and/or accurate reference for purchasing decision. Interested parties should make their own enquiries using other sources supplied. Dimensions shown on the plans are approximate values in length by width. Illustration by Raoul Isidro 04111 28500.

Every precaution has been taken to establish accuracy of the information in this brochure but does not constitute any representation by the vendor or agent.

