



## 9/42 Bayswater Road RUSHCUTTERS BAY, NSW

2 bed | 1 bath

**R&W**

Quiet yet ultra-convenient hideaway in the tightly held "Coonana" security block of 12, this 2nd floor apartment is tucked away within the leafy gated-community of a well-maintained group of classic strata buildings. Offering comfort, character and modern essentials, this delightful apartment is ready to move in, rent out or adapt to suit your personal style. Centrally located with shops, cafes, parks and transport just metres from the door, you???ll enjoy walk-to-almost-everywhere convenience - including Rushcutters Bay Park marinas, tennis courts, the harbor, the city, Kings Cross train station, hip Darlinghurst cafe scene and Potts Point shopping/dining and lifestyle attractions

...

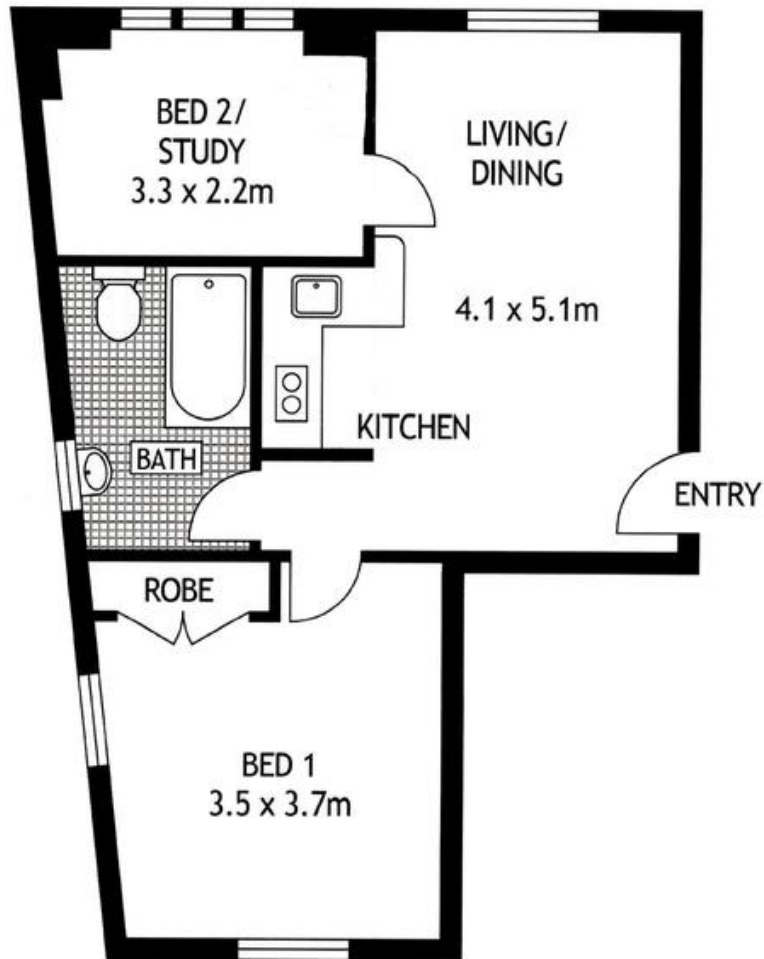
[rwebay.com.au/1968846](http://rwebay.com.au/1968846)

Luke McDonnell 0418 844 110

Angelo Bouras 0401 658 653

**Proudly Richardson&Wrench**

Richardson & Wrench Elizabeth Bay / Potts Point  
02 8356 2700



SECOND FLOOR



UNIT 9 " COONANA " 42 BAYSWATER ROAD

RUSHCUTTERS BAY

SCAPE Floor Planing Disclaimer: This floor plan is conceptual only. it is provided for illustrative purposes only and should not be relied upon. We make no guarantees to the correctness of this plan. All interested parties should make and rely on their own enquiries in determining the accuracy of the information contained in this floor plan.