



## 37/8 Macleay Street POTTS POINT, NSW

2 bed | 1 bath | 1 car

# R&W

- \* Level lift access from secure parking via Billyard Avenue
- \* Gated walkway access from Macleay Street to secure lift lobby
- \* Light filled 7th floor corner wing position, foyer area, built-ins
- \* Open plan living/dining with deep picture window and sunny balcony
- \* Quartzstone new kitchen with breakfast bar, ceramic hob, rangehood, oven, integrated dishwasher
- \* 2 double bedrooms, both with built-in wardrobes
- \* Stylish, bright and ready to move in or invest, this ...

[rwebay.com.au/1975507](http://rwebay.com.au/1975507)

Jason Boon 0418 671 494

Geoff Cox 0418 231 004

**Proudly Richardson&Wrench**

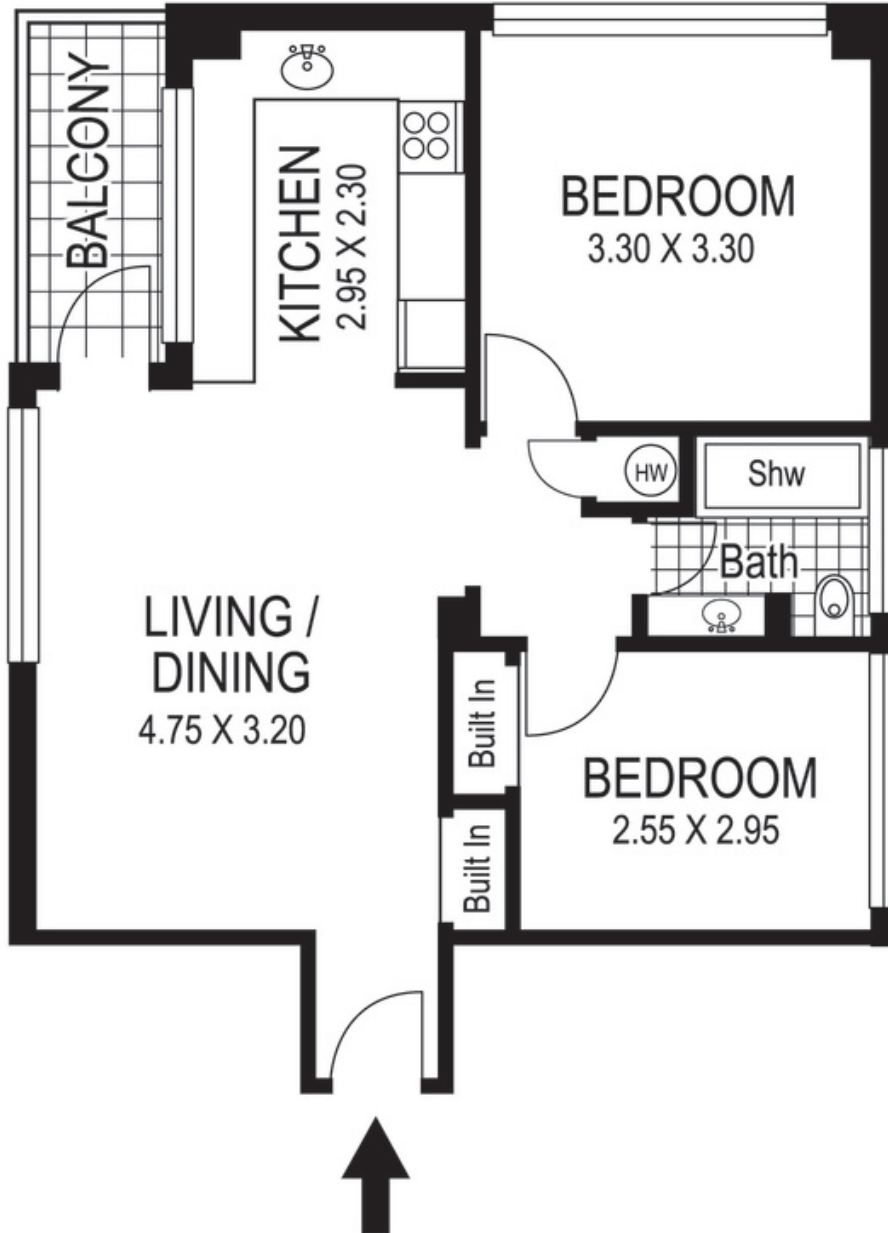
Richardson & Wrench Elizabeth Bay / Potts Point  
02 8356 2700



**R&W** | The best reputation  
in real estate  
Elizabeth Bay/Potts Point

Contact:  
Jason Boon  
0418 671 494

Contact:  
Geoff Cox  
0418 231 004



37 / 8 Macleay Gardens  
POTTS POINT  
*"MACLEAY GARDENS"*

Plans shown are for presentation purposes only and are not part of any legal document or title and are subject to errors, omissions, inaccuracies and they should not be used as sole and/or accurate reference for purchasing decision. Interested parties should make their own enquiries using other sources supplied. Dimensions shown on the plans are approximate values in length by width. Illustration by Raoul Isidro 04111 28500.

Every precaution has been taken to establish accuracy of the information in this brochure but does not constitute any representation by the vendor or agent.

