



12/9-11 Queens Avenue RUSHCUTTERS BAY, NSW

2 bed | 2 bath | 1 car

R&W

- * Level access via lift from lobby and lockup garage with storage
- * Spacious open plan living/dining areas lead out to wraparound balcony with bbq area
- * Quartzstone kitchen with integrated fridge, dishwasher, ceramic hob, rangehood, oven
- * Master bedroom with built-ins and smart modern fully tiled ensuite bathroom
- * Oversized 2nd bedroom with built-ins and direct access to idyllic balcony
- * Stylish modern fully tiled main bathroom with a conce...

rwebay.com.au/1989786

Jason Boon 0418 671 494

Geoff Cox 0418 231 004

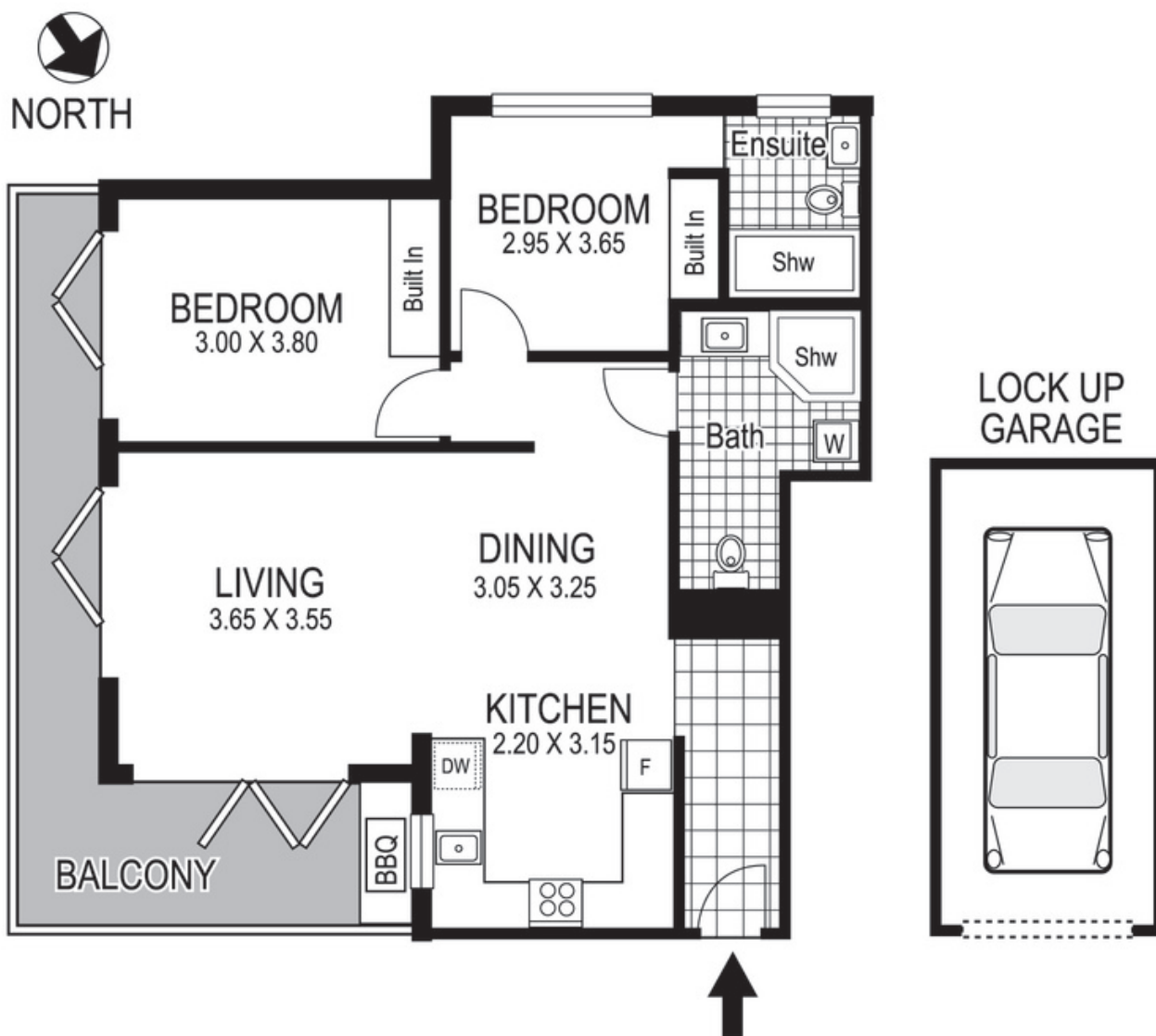
Proudly Richardson&Wrench

Richardson & Wrench Elizabeth Bay / Potts Point
02 8356 2700

R&W | The best reputation
in real estate
Elizabeth Bay/Potts Point

Contact:
Jason Boon
0418 671 494

Contact:
Geoff Cox
0418 231 004



**12 / 9-11 Queens Avenue
RUSHCUTTERS BAY**

Plans shown are for presentation purposes only and are not part of any legal document or title and are subject to errors, omissions, inaccuracies and they should not be used as sole and/or accurate reference for purchasing decision. Interested parties should make their own enquiries using other sources supplied. Dimensions shown on the plans are approximate values in length by width. Illustration by Raoul Isidro 04111 28500.

Every precaution has been taken to establish accuracy of the information in this brochure but does not constitute any representation by the vendor or agent.

R&W