



## 2/6 Challis Avenue POTTS POINT, NSW

3 bed | 2 bath | 2 car

**R&W**

- \* Gated private level entry from street, secure private porch, foyer
- \* Direct internal private access from double security lockup garage
- \* Bay fronted large Master bedroom with modern ensuite, walk-in robe and courtyard access
- \* 2nd double bedroom with walk in robe and study area leading to North facing terrace
- \* 3rd double bedroom with Built in Wardrobe also leads to North facing terrace
- \* Modern main bathroom with powder room, separate inter...

[rwebay.com.au/2022733](http://rwebay.com.au/2022733)

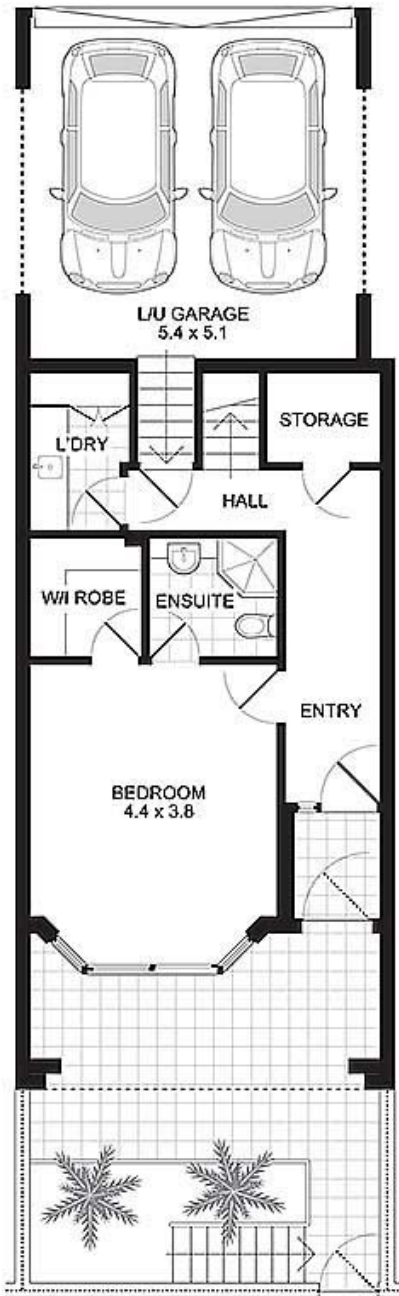
Geoff Cox 0418 231 004

Jason Boon 0418 671 494

**Proudly Richardson&Wrench**

Richardson & Wrench Elizabeth Bay / Potts Point  
02 8356 2700

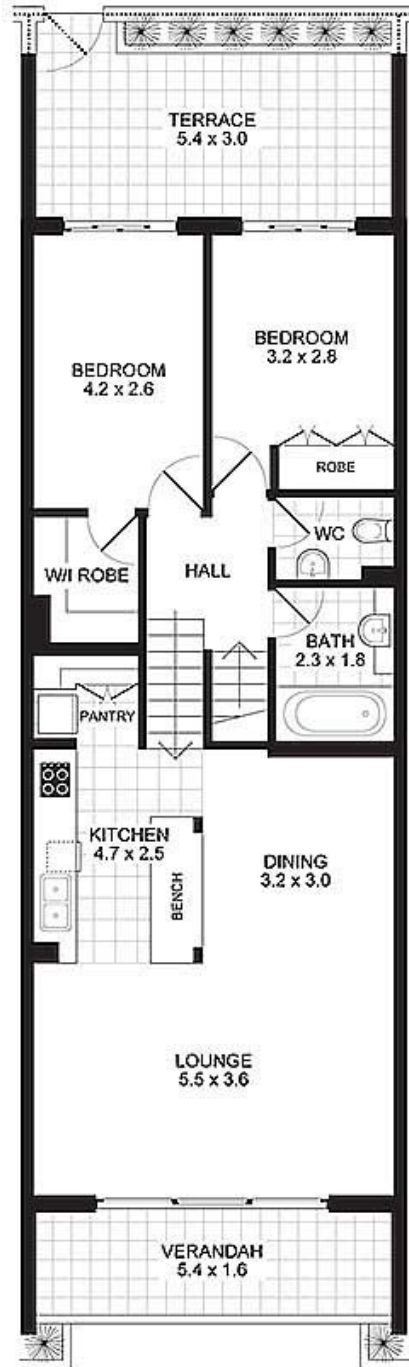
TOWNHOUSE 2  
6 CHALLIS AVENUE  
POTTS POINT



**LEVEL ONE**  
Scale 1cm = 1m (approx)

**PROMOPLANS ...adding REAL value!**

E&OE This plan is for illustrative purposes only and dimensions are approximate. It does not constitute part of any legal document or commercial contract for the sale or lease of this property.  
COPYRIGHT © 2010 PROMOPLANS 02 9572 7111  
Warning: Usage restricted under the Copyright Act



**LEVEL TWO**  
Scale 1cm = 1m (approx)

**Contact**

Jason Boon  
Phone: 8356 2700 Mobile: 0418 671 494  
Email: jboon@rwebay.com.au

Geoff Cox  
Phone: 8356 2734 Mobile: 0418 231 004  
Email: gcox@rwebay.com.au

**R&W Elizabeth Bay  
Potts Point**

**R&W**