



## 41/8 Macleay Street POTTS POINT, NSW

1 bed | 1 bath

Bathed in north east light & presiding over sublime views of the boat filled Bay & up the Harbour to the Heads, the spell binding panorama takes centre stage at this idyllic one bedroom home. Set on level 7 of Macleay Gardens the building is set quietly back from the street with access to both Macleay Street on the Potts Point side and Billyard Ave on the Elizabeth Bay side.

\* Elevated uninterrupted position looking north east to the Heads.

\* Floating timber floors, floor to ceiling sliders capture views

# R&W

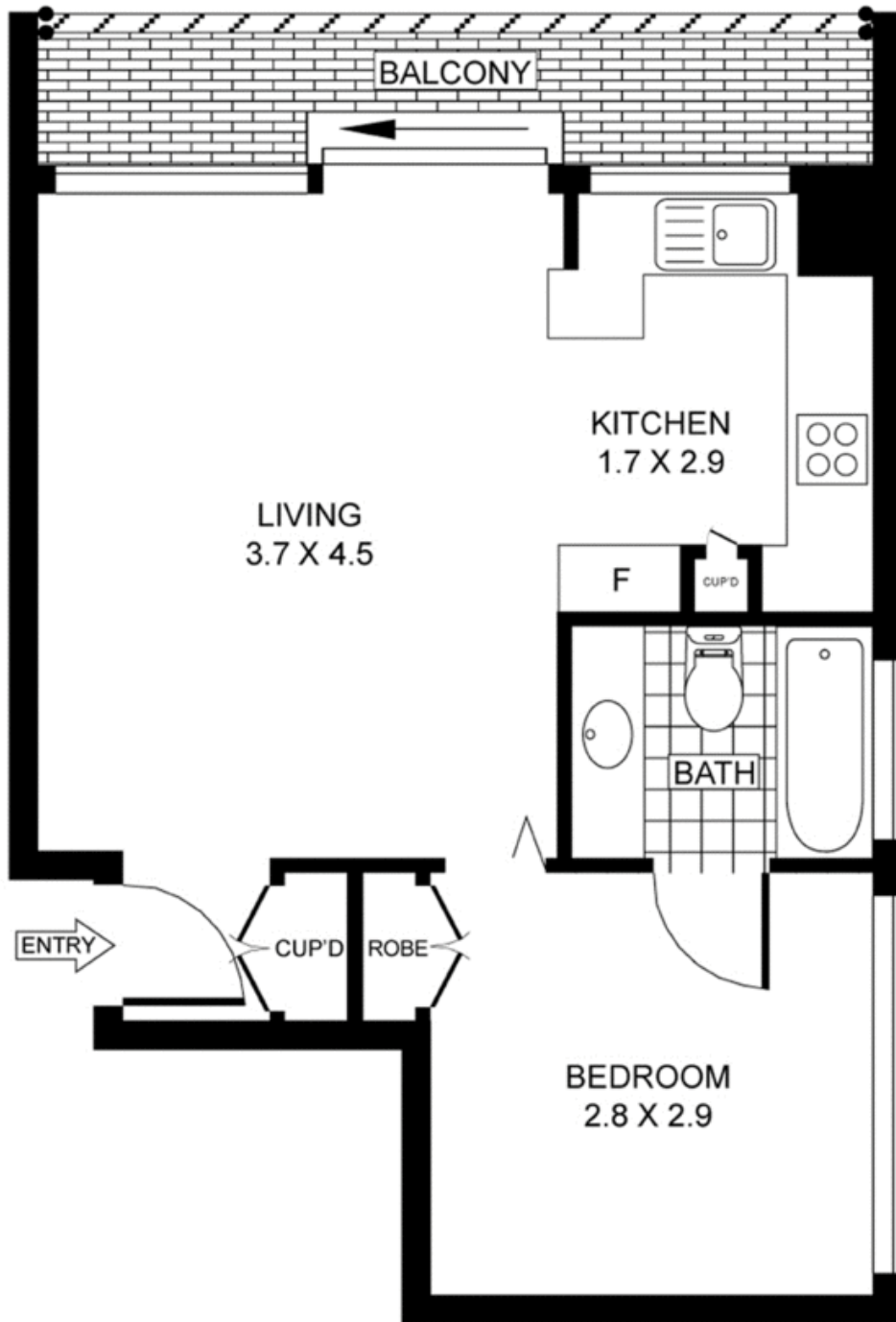
[rwebay.com.au/2038904](http://rwebay.com.au/2038904)

Greg McKinley 0412 044 822

Andrew Hoggett 0412 208 614

**Proudly Richardson&Wrench**

Richardson & Wrench Elizabeth Bay / Potts Point  
02 8356 2700



LEVEL SEVEN