



1702/7 Rockwall Crescent POTTS POINT, NSW

3 bed | 2 bath | 4 car

R&W

North facing and creatively reinvented by internationally acclaimed designer Phillip Silver, this fabulous New York style 2-bedroom-plus-study/library apartment originally had a standard 3-bedroom layout and could easily revert if desired. Wrapped in glass and 270-degree views of the CBD, Opera House, Bridge and Sydney Harbour, the flexible floorplan opens to two private alfresco balconies. Occupying a prized north-west corner wing position in prestigious Rockwall Apartments, an impeccable modern Mirvac-built security landmark block in the heart of Sydney's most fashionable locale, this dream apartment is quietly set high above the cool cosmopolitan lifestyle.

rwebay.com.au/2100155

Jason Boon 0418 671 494

Geoff Cox 0418 231 004

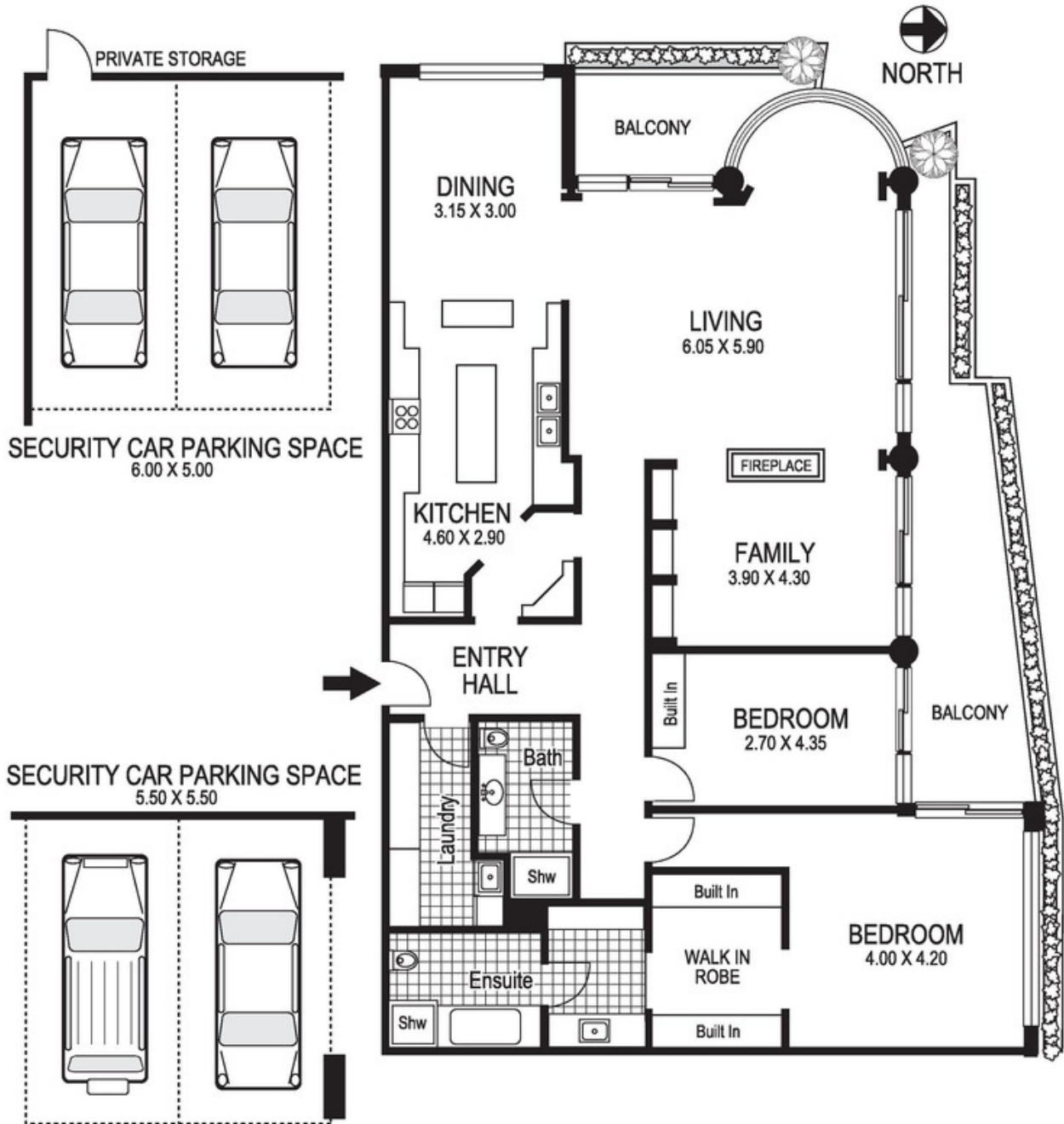
Proudly Richardson&Wrench

Richardson & Wrench Elizabeth Bay / Potts Point
02 8356 2700

Contact:
Jason Boon
0418 671 494

Contact:
Geoff Cox
0418 231 004

R&W | The best reputation
in real estate
Elizabeth Bay/Potts Point



1702 / 7 Rockwall Crescent POTTS POINT

Plans shown are for presentation purposes only and are not part of any legal document or title and are subject to errors, omissions, inaccuracies and they should not be used as sole and/or accurate reference for purchasing decision. Interested parties should make their own enquiries using other sources supplied. Dimensions shown on the plans are approximate values in length by width. Illustration by Raoul Isidro 04111 28500.

Every precaution has been taken to establish accuracy of the information in this brochure but does not constitute any representation by the vendor or agent.

R&W