



## 22/165 Victoria Street POTTS POINT, NSW

1 bed | 1 bath

# R&W

- \* Open living room and adjoining separate dining room/study, leafy outlooks
- \* CaesarStone kitchen features city cameos, st/steel hob, oven, dishwasher
- \* Double bedroom with city cameos, mirrored built-in wardrobe, ceiling fan
- \* Glass-mosaic light and airy bathroom with bath, built-ins, internal laundry
- \* Entry hall, built-in shelves, tall doorways, high ceilings, Oak floorboards
- \* Smart colours, quality modern finishes, monitored sec...

[rwebay.com.au/2102672](https://www.rwebay.com.au/2102672)

Geoff Cox 0418 231 004

Jason Boon 0418 671 494

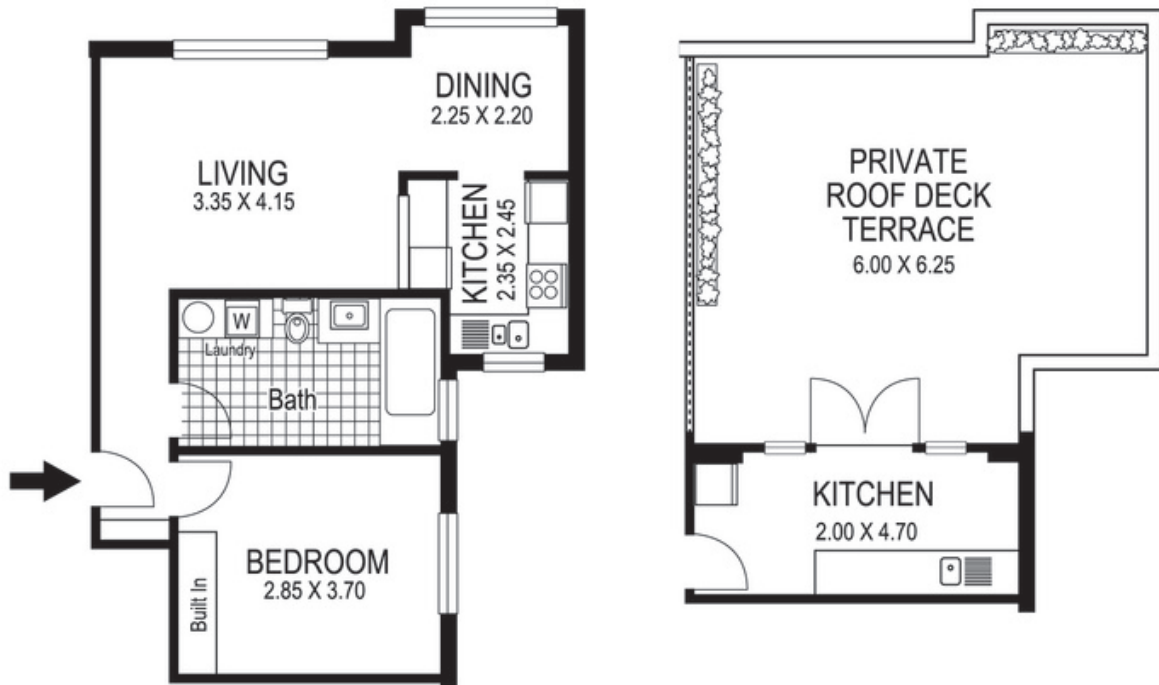
**Proudly Richardson&Wrench**

Richardson & Wrench Elizabeth Bay / Potts Point  
02 8356 2700

**R&W** | The best reputation  
in real estate  
**Elizabeth Bay/Potts Point**

Contact:  
Jason Boon  
0418 671 494

Contact:  
Geoff Cox  
0418 231 004



22 / 165 Victoria Street  
POTTS POINT  
*"CROSSPOINT"*

Plans shown are for presentation purposes only and are not part of any legal document or title and are subject to errors, omissions, inaccuracies and they should not be used as sole and/or accurate reference for purchasing decision. Interested parties should make their own enquiries using other sources supplied. Dimensions shown on the plans are approximate values in length by width. Illustration by Raoul Isidro 04111 28500.

Every precaution has been taken to establish accuracy of the information in this brochure but does not constitute any representation by the vendor or agent.

**R&W**