



6/1 Springfield Avenue POTTS POINT, NSW

2 bed | 1 bath | 1 car

R&W

Brimming with charm, quality and capital growth potential, this cosmopolitan blank-canvas is offered for the first time in almost 30 years. Updated over the years and superbly maintained, the oversized layout occupies half the top floor of a grand classic neo-Georgian security block of only 7. Set opposite a leafy piazza-garden and quietly located in a trendy village enclave known for some of the most distinguished Art Deco security buildings and smart modern supermarket and cafe scene ??? this gracious apartment is ready to move in or redecorate to suit.

* Enjoy as is or create the chic penthouse-style contem...

rwebay.com.au/2122411

Jason Boon 0418 671 494

Geoff Cox 0418 231 004

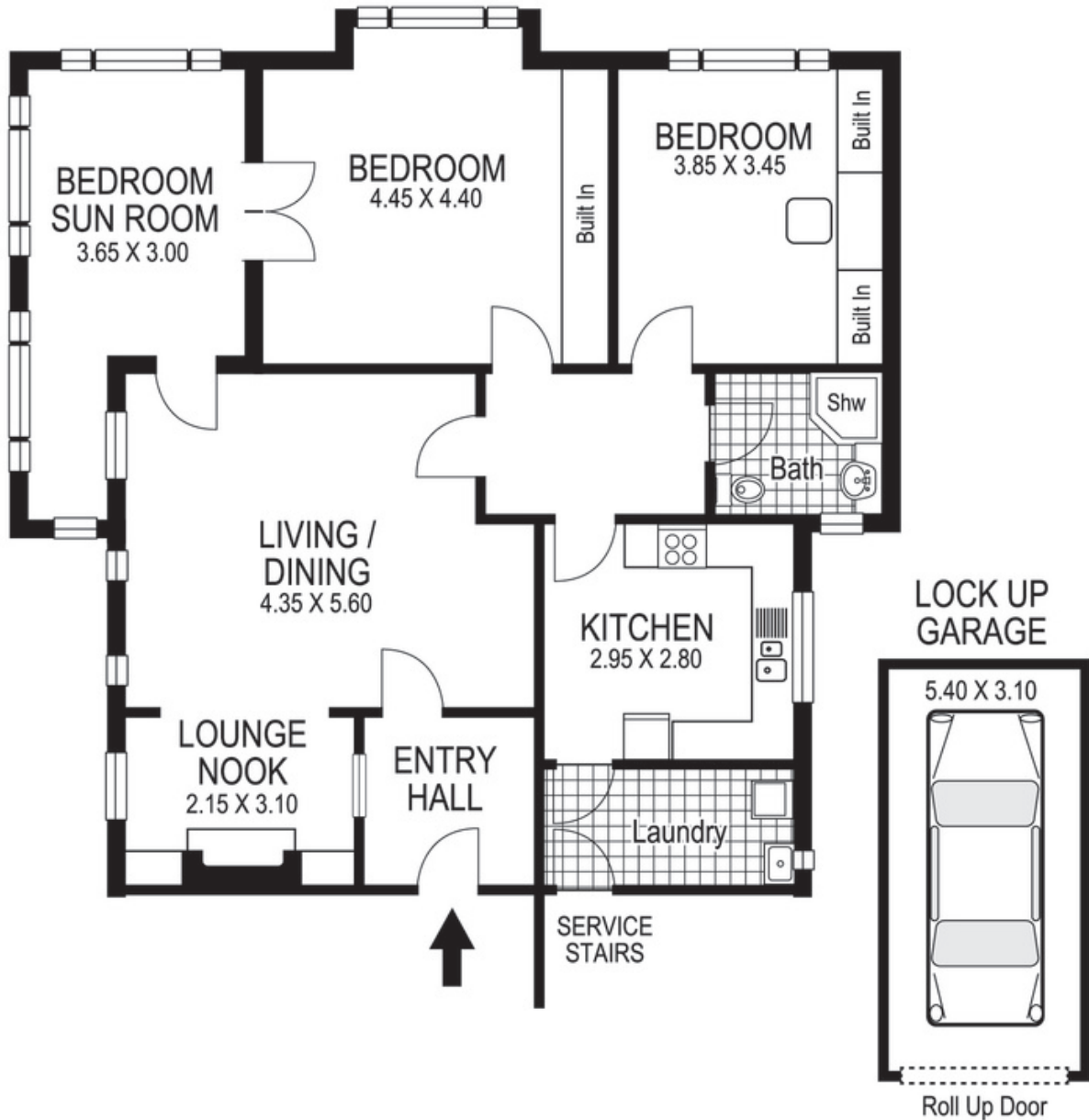
Proudly Richardson&Wrench

Richardson & Wrench Elizabeth Bay / Potts Point
02 8356 2700

R&W | The best reputation
in real estate
Elizabeth Bay/Potts Point

Contact:
Jason Boon
0418 671 494

Contact:
Geoff Cox
0418 231 004



6 / 1 Springfield Avenue POTTS POINT

Plans shown are for presentation purposes only and are not part of any legal document or title and are subject to errors, omissions, inaccuracies and they should not be used as sole and/or accurate reference for purchasing decision. Interested parties should make their own enquiries using other sources supplied. Dimensions shown on the plans are approximate values in length by width. Illustration by Raoul Isidro 04111 28500.

Every precaution has been taken to establish accuracy of the information in this brochure but does not constitute any representation by the vendor or agent.

R&W