



## 14/5 Wylde Street POTTS POINT, NSW

2 bed | 1 bath | 1 car

**R&W**

- \* Practical layout enhanced by views, northerly sunshine and coastal breezes
- \* Spacious separate living room and dining/sunroom or study, central entry hall
- \* Eat-in kitchen with a gas stove, rangehood, dishwasher, ample built-in storage
- \* Extra large master bedroom, queen size 2nd bedroom, each with built-in robe
- \* Fresh bright bathroom with internal laundry facility

[rwebay.com.au/2144909](http://rwebay.com.au/2144909)

Jason Boon 0418 671 494

Geoff Cox 0418 231 004

**Proudly Richardson&Wrench**

Richardson & Wrench Elizabeth Bay / Potts Point  
02 8356 2700

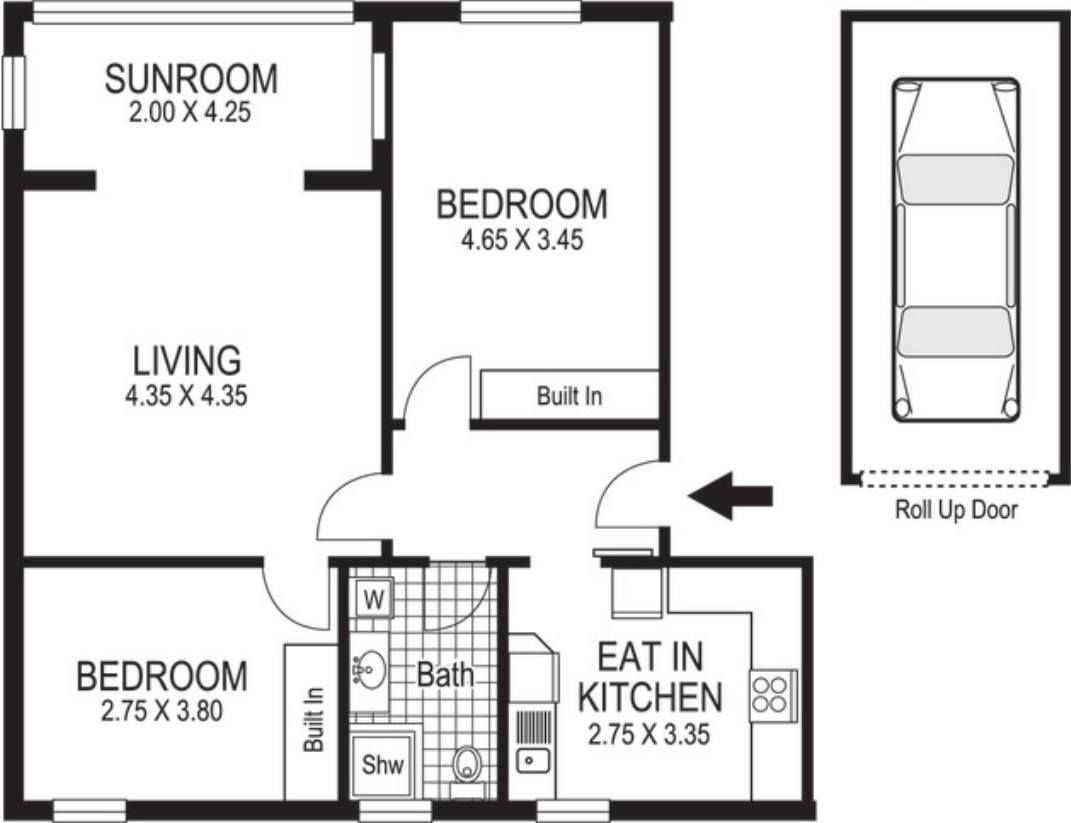
**R&W** | The best reputation  
in real estate  
Elizabeth Bay/Potts Point

Contact:  
Jason Boon  
0418 671 494

Contact:  
Geoff Cox  
0418 231 004



LOCK UP GARAGE  
ON SECURE PARKING  
BUILDING  
(on separate title)



# 14 / 5 Wylde Street POTTS POINT

Plans shown are for presentation purposes only and are not part of any legal document or title and are subject to errors, omissions, inaccuracies and they should not be used as sole and/or accurate reference for purchasing decision. Interested parties should make their own enquiries using other sources supplied. Dimensions shown on the plans are approximate values in length by width. Illustration by Raoul Isidro 04111 28500.

Every precaution has been taken to establish accuracy of the information in this brochure but does not constitute any representation by the vendor or agent.

