



5/65 Elizabeth Bay Road ELIZABETH BAY, NSW

3 bed | 2 bath | 1 car

R&W

- * Valuable off-street parking via shared level access secure walkway/driveway
- * Large open plan living/dining areas lead out onto balcony and floodlit decking
- * Gourmet European kitchen with granite benchtop, breakfast bar, ample storage
- * Master bedroom with own sitting area, walk-in robe, marble ensuite bathroom
- * 2 additional double bedrooms with built-ins, marble main bathroom (with bath)
- * Study nook, internal laundry room, central hallway wi...

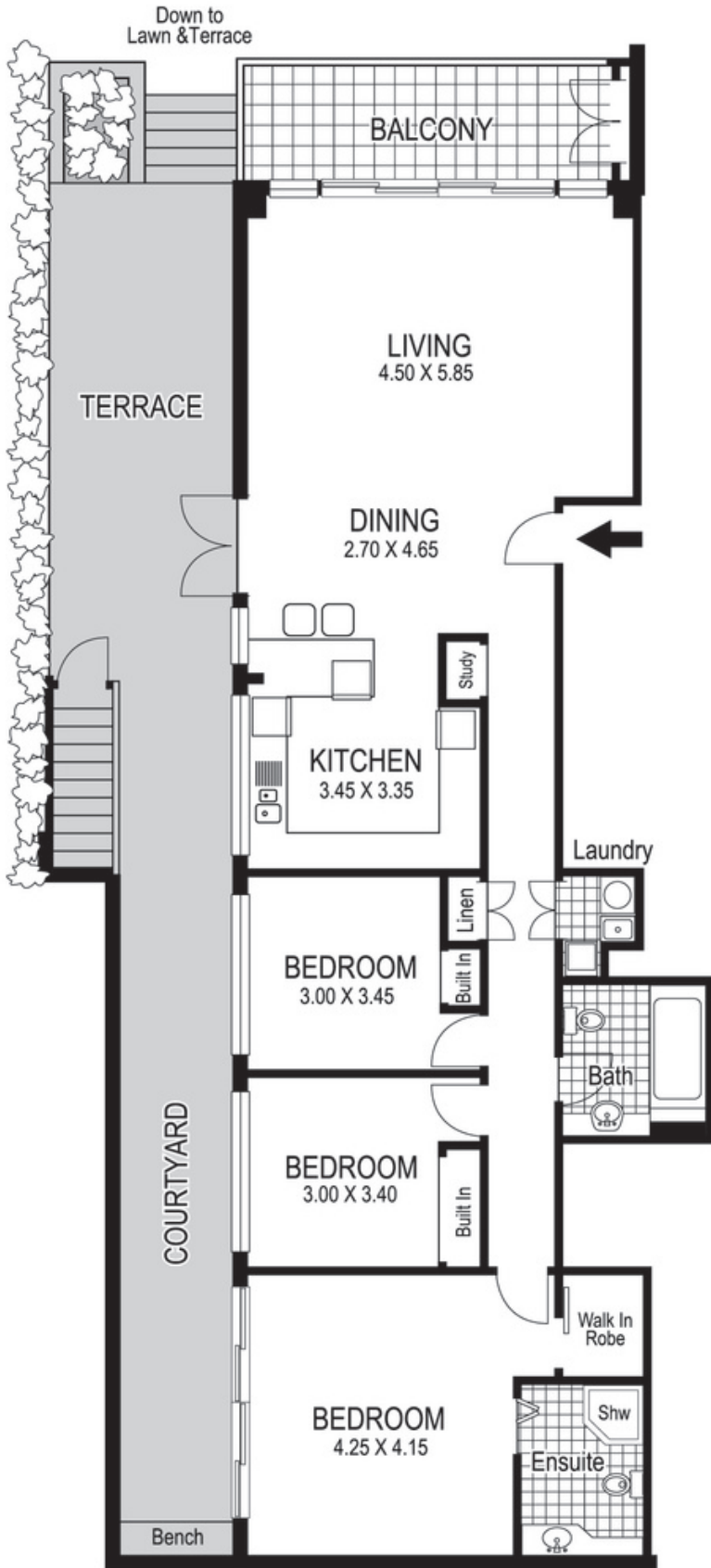
rwebay.com.au/2150502

Jason Boon 0418 671 494

Geoff Cox 0418 231 004

Proudly Richardson&Wrench

Richardson & Wrench Elizabeth Bay / Potts Point
02 8356 2700



Down to
Lawn & Terrace

BALCONY

TERRACE

LIVING
4.50 X 5.85

DINING
2.70 X 4.65

KITCHEN
3.45 X 3.35

Study

Laundry

BEDROOM
3.00 X 3.45

Linen

Built In

Bath

BEDROOM
3.00 X 3.40

Built In

Walk In
Robe

BEDROOM
4.25 X 4.15

Shw
Ensuite

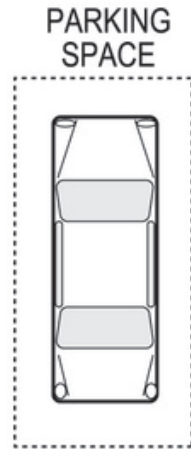
Bench

5 / 65 Elizabeth Bay Road
ELIZABETH BAY

R&W | The best reputation
in real estate
Elizabeth Bay/Potts Point

Contact:
Jason Boon
0418 671 494

Contact:
Geoff Cox
0418 231 004



Plans shown are for presentation purposes only and are not part of any legal document or title and are subject to errors, omissions, inaccuracies and they should not be used as sole and/or accurate reference for purchasing decision. Interested parties should make their own enquiries using other sources supplied. Dimensions shown on the plans are approximate values in length by width. Illustration by Raoul Isidro 04111 28500.

Every precaution has been taken to establish accuracy of the information in this brochure but does not constitute any representation by the vendor or agent.

R&W