



## 9/75 Macleay Street POTTS POINT, NSW

2 bed | 2 bath | 1 car

Set over two spacious levels opening to three sunny private balconies, this modern pet-friendly apartment offers an ideal lockup-and-go lifestyle in the very heart of fashionable Potts Point. Capturing elevated district outlooks and cameo-views of the CBD and Harbour Bridge, the flowing layout combines contemporary flair with designer finishes and plenty of natural light. Occupying one of the best positions in Westbourne, a tightly held boutique security block of 11, this cool cosmopolitan apartment is ideal for those wanting quiet convenience, relaxed elegance and easy entertaining indoors and out.

...

# R&W

[rwebay.com.au/2194702](https://www.rwebay.com.au/2194702)

Greg McKinley 0412 044 822

Andrew Hoggett 0412 208 614

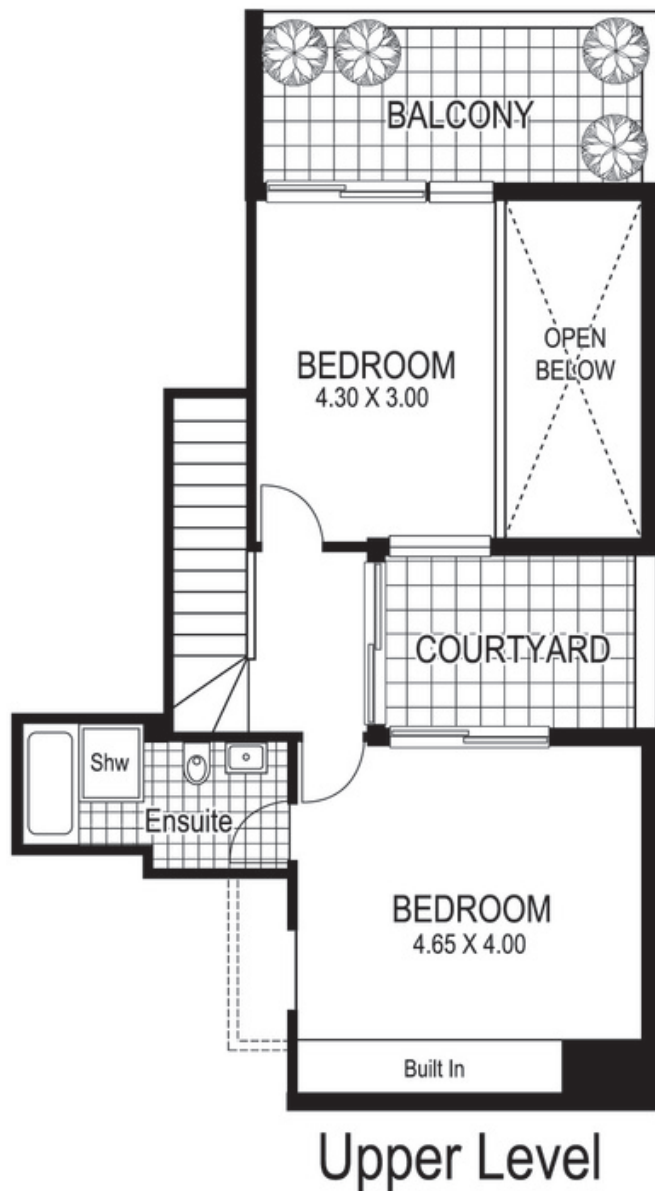
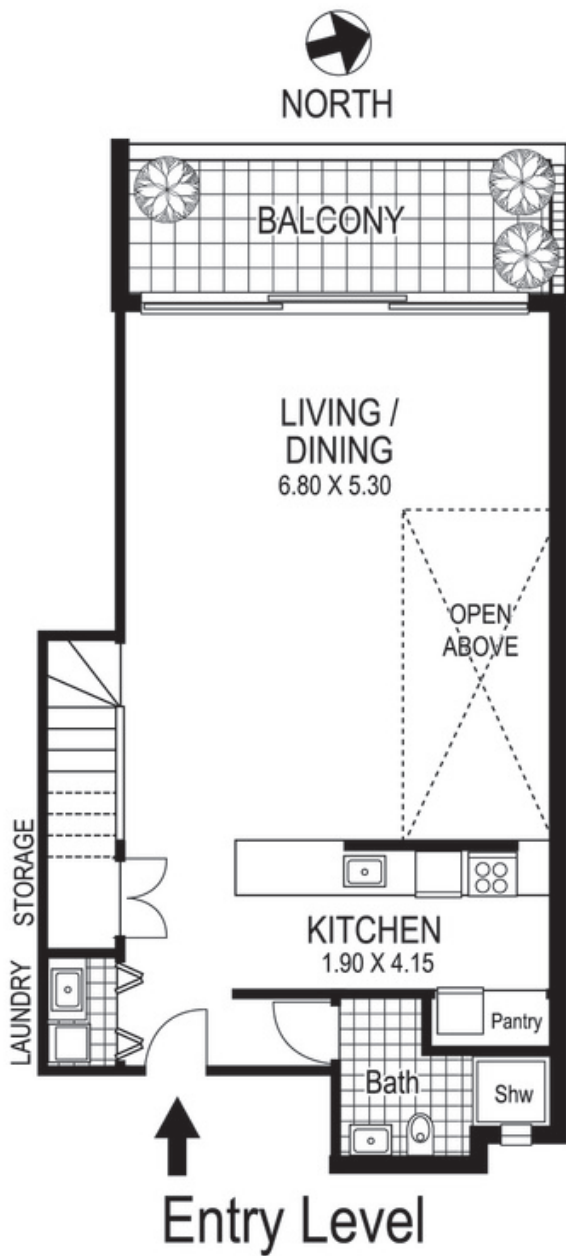
**Proudly Richardson&Wrench**

Richardson & Wrench Elizabeth Bay / Potts Point  
02 8356 2700

**R&W** | The best reputation  
in real estate  
**Elizabeth Bay/Potts Point**

Contact:  
Greg McKinley  
0412 044 822

Contact:  
Andrew Hoggett  
0412 208 614



9 / 75 Macleay Street  
POTTS POINT  
*"WESTBOURNE"*

Plans shown are for presentation purposes only and are not part of any legal document or title and are subject to errors, omissions, inaccuracies and they should not be used as sole and/or accurate reference for purchasing decision. Interested parties should make their own enquiries using other sources supplied. Dimensions shown on the plans are approximate values in length by width. Illustration by Raoul Isidro 04111 28500.

Every precaution has been taken to establish accuracy of the information in this brochure but does not constitute any representation by the vendor or agent.

**R&W**