



14/21C Billyard Avenue ELIZABETH BAY, NSW

1 bed | 1 bath | 1 car

R&W

Rare and tranquil in its setting, located only metres to the harbour foreshore and complete with outdoor entertaining area, security carspace (enter via Onslow Avenue) and separate storage cage, this well proportioned one bedroom apartment offers a rare ground floor position in the recently updated ?The Eliza?.

Features:

- * Living and dining with wall to wall glass flowing onto a full width entertaining balcony
- * Enjoy as is or create your own contemporary haven in ...

rwebay.com.au/2286279

Andrew Hoggett 0412 208 614

Greg McKinley 0412 044 822

Proudly Richardson&Wrench

Richardson & Wrench Elizabeth Bay / Potts Point
02 8356 2700

Contact:
John Hogett
0431 411 004

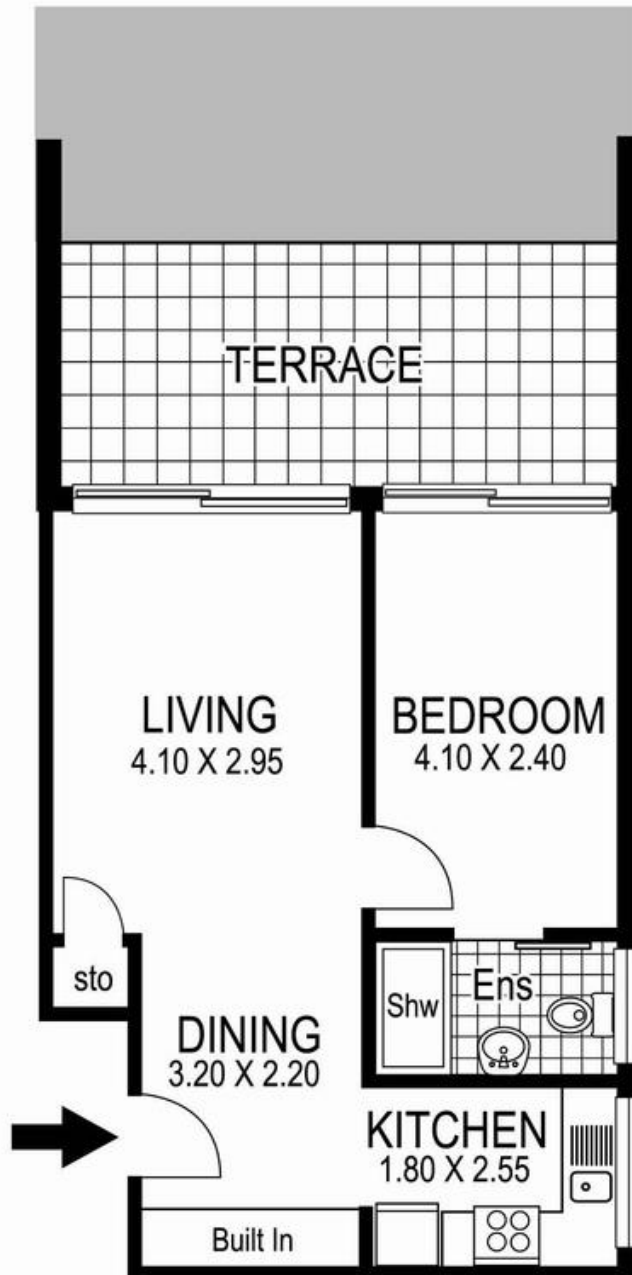
R&W | The best reputation
in real estate
Elizabeth Bay/Potts Point



NORTH



CAR SPACE



14 / 21c Billyard Avenue
ELIZABETH BAY

Plans shown are for presentation purposes only and are not part of any legal document or title and are subject to errors, omissions, inaccuracies and they should not be used as sole and/or accurate reference for purchasing decision. Interested parties should make their own enquiries using other sources supplied. Dimensions shown on the plans are approximate values in length by width. Illustration by Raoul Isidro 04111 28500.

Every precaution has been taken to establish accuracy of the information in this brochure but does not constitute any representation by the vendor or agent.

R&W