



## 33/91-93 Macleay Street POTTS POINT, NSW

2 bed | 1 bath

Enjoying treetop views and sun-splashed privacy, this top floor apartment is prime positioned in sought after Axus, a recently rebuilt modern landmark security block. In the heart of the ever-fashionable buzz and lifestyle yet surprisingly quiet, this bright and spacious home or ready-renter features an open plan layout for sleek modern cosmopolitan living. With cafes, delis, supermarkets, specialty shops, transport options and parks literally at the door, this stylish modern city pad is a well-priced investment or an ideal escape from today's fast pace.

\* Open plan kitchen with granite benchtop, glass mosaic...

# R&W

[rwebay.com.au/2329118](https://www.rwebay.com.au/2329118)

Jason Boon 0418 671 494

Geoff Cox 0418 231 004

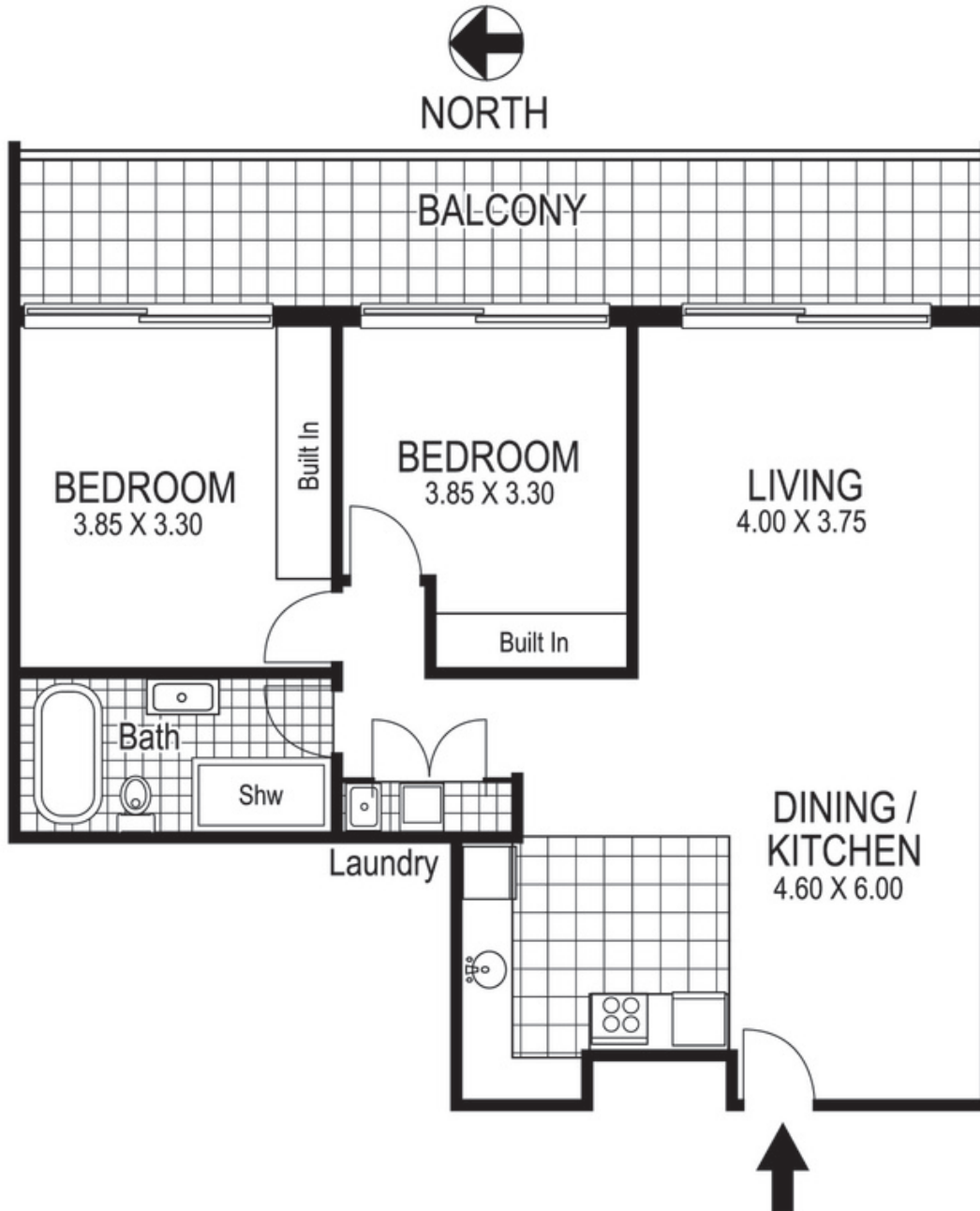
**Proudly Richardson&Wrench**

Richardson & Wrench Elizabeth Bay / Potts Point  
02 8356 2700

Contact:  
Jason Boon  
0418 671 494

Contact:  
Geoff Cox  
0418 231 004

**R&W** | The best reputation  
in real estate  
Elizabeth Bay/Potts Point



33 / 91-93 Macleay Street  
POTTS POINT  
*"AXUS"*

Plans shown are for presentation purposes only and are not part of any legal document or title and are subject to errors, omissions, inaccuracies and they should not be used as sole and/or accurate reference for purchasing decision. Interested parties should make their own enquiries using other sources supplied. Dimensions shown on the plans are approximate values in length by width. Illustration by Raoul Isidro 04111 28500.