



714/81 Macleay Street POTTS POINT, NSW

2 bed | 2 bath | 1 car

R&W

- * Secure lift access via stylish lobby (with concierge) and secure parking
- * The apartment's dual level layout offers plenty of space, light and views
- * Central entry foyer, ample built-ins, internal laundry room
- * 2 spacious bedrooms with built-ins, 2 stylish bathrooms
- * Master with ensuite, walk-in robe and study/sitting area
- * Open plan upper level is focused on relaxing and entertaining
- * Large adjoining living and dining areas flow to sunny balcony

rwebay.com.au/2330347

Jason Boon 0418 671 494

Geoff Cox 0418 231 004

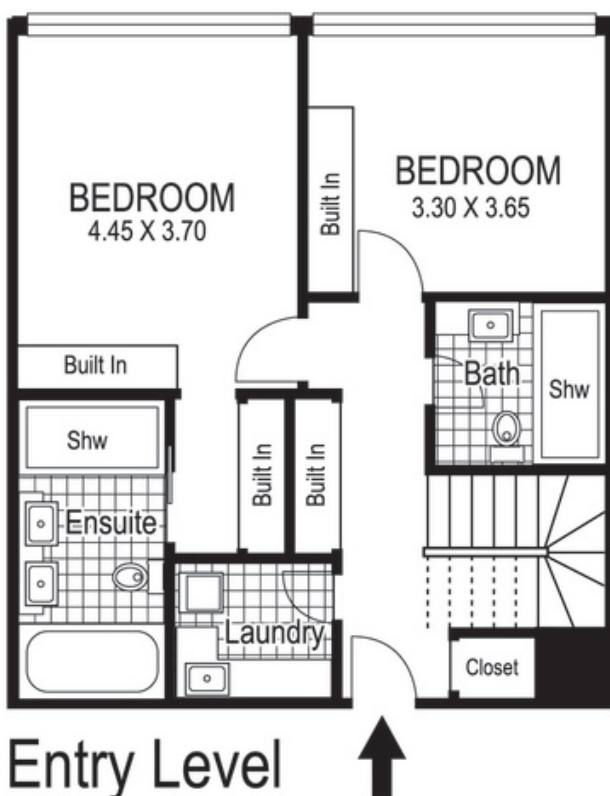
Proudly Richardson&Wrench

Richardson & Wrench Elizabeth Bay / Potts Point
02 8356 2700

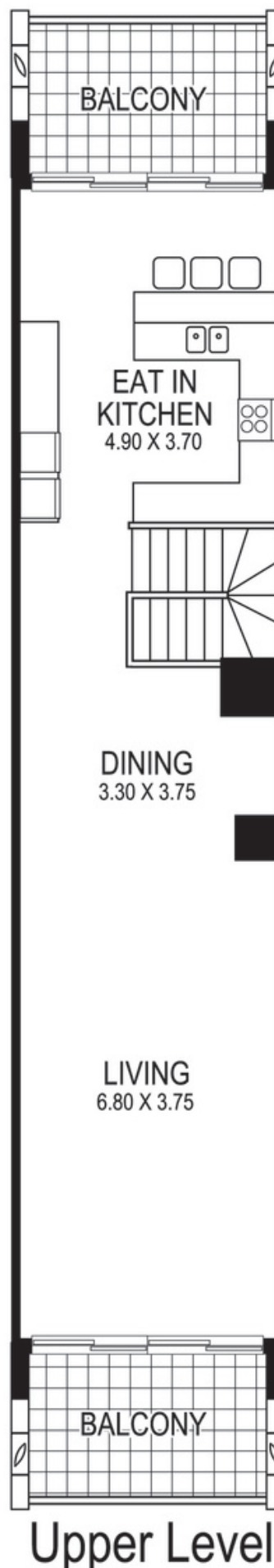
R&W | The best reputation
in real estate
Elizabeth Bay/Potts Point

Contact:
Jason Boon
0418 671 494

Contact:
Geoff Cox
0418 231 004



Entry Level



Upper Level

714 / 81 Macleay Street
POTTS POINT
"IKON"

Plans shown are for presentation purposes only and are not part of any legal document or title and are subject to errors, omissions, inaccuracies and they should not be used as sole and/or accurate reference for purchasing decision. Interested parties should make their own enquiries using other sources supplied. Dimensions shown on the plans are approximate values in length by width. Illustration by Raoul Isidro 04111 28500.

Every precaution has been taken to establish accuracy of the information in this brochure but does not constitute any representation by the vendor or agent.

R&W