



## 24/167 Brougham Street POTTS POINT, NSW

3 bed | 2 bath | 1 car



Boasting internals of 113m<sup>2</sup> this spacious apartment boasts an enviable floor plan with an east facing aspect.

Open plan living and dining area flows seamlessly onto a large entertaining terrace perfect for alfresco dining. Air conditioning and tiled throughout ensuring the apartment remains cool throughout summer.

Modern kitchen with dishwasher and ample cupboard space.

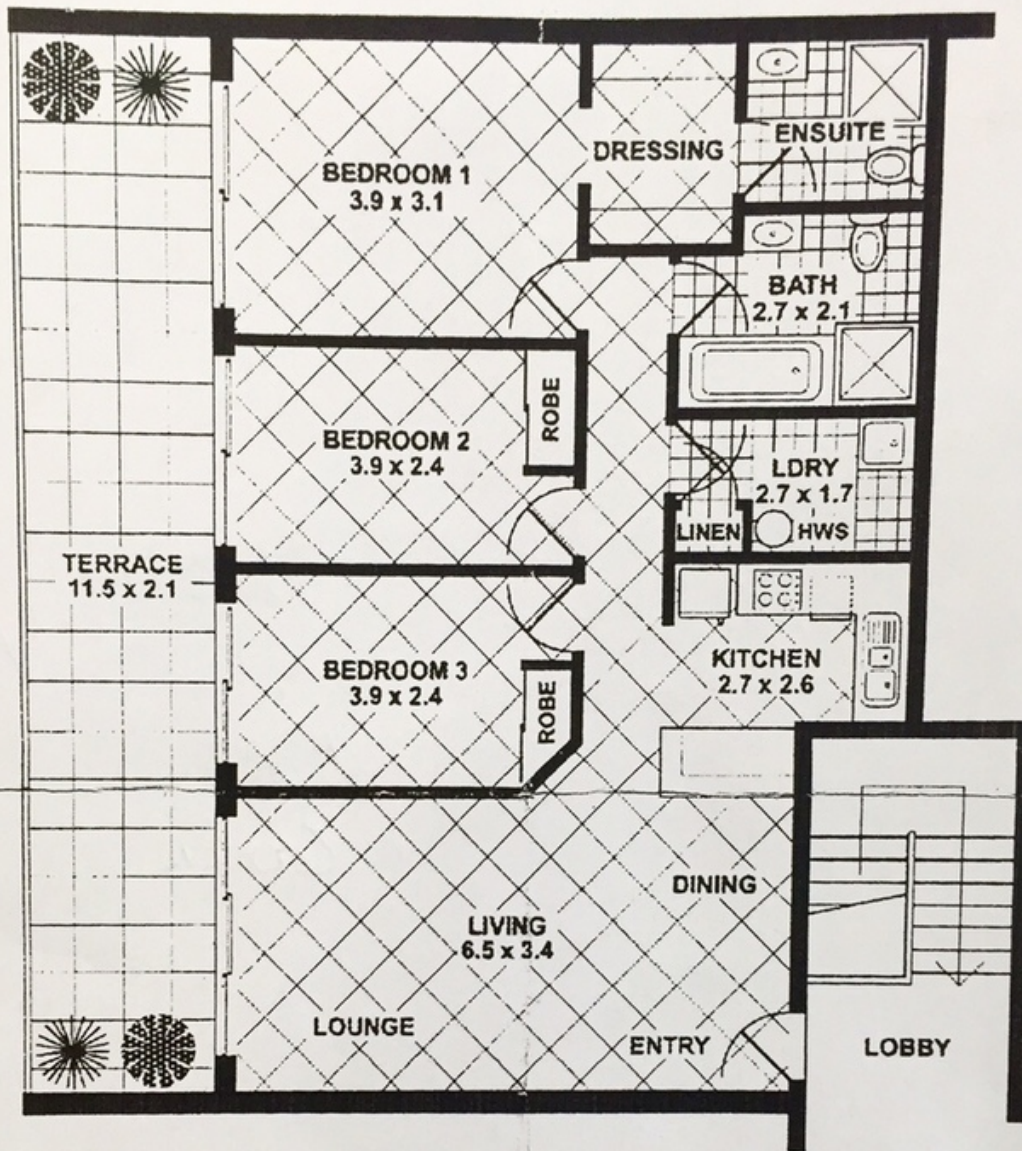
Double size second and third bedrooms, both with mirror...

[rwebay.com.au/2385705](http://rwebay.com.au/2385705)

R&W Leasing 02 8356 2700

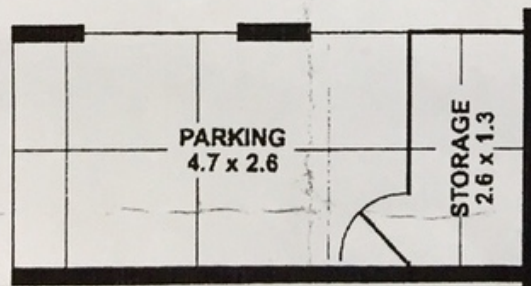
**Proudly Richardson&Wrench**

Richardson & Wrench Elizabeth Bay / Potts Point  
02 8356 2700



### FLOOR PLAN

Scale 1cm = 1m (approx)



### GARAGE