



503/14 Macleay Street POTTS POINT, NSW

3 bed | 2 bath | 2 car

R&W

- * Secure lift access, elegant marble lobby, secure double garage with storage
- * Superb day/night views enhance the bay-fronted deep balcony, gas for bbq
- * Huge open living/entertainment room, adjoining separate dining/family room
- * Caesarstone Miele gas gourmet kitchen with breakfast island, ample storage
- * Oversize master suite with huge walk-in robe and designer ensuite bathroom
- * 2nd double bedroom with built-ins, separate open 2-wa...

rwebay.com.au/2392404

Jason Boon 0418 671 494

Geoff Cox 0418 231 004

Andrew Hoggett 0412 208 614

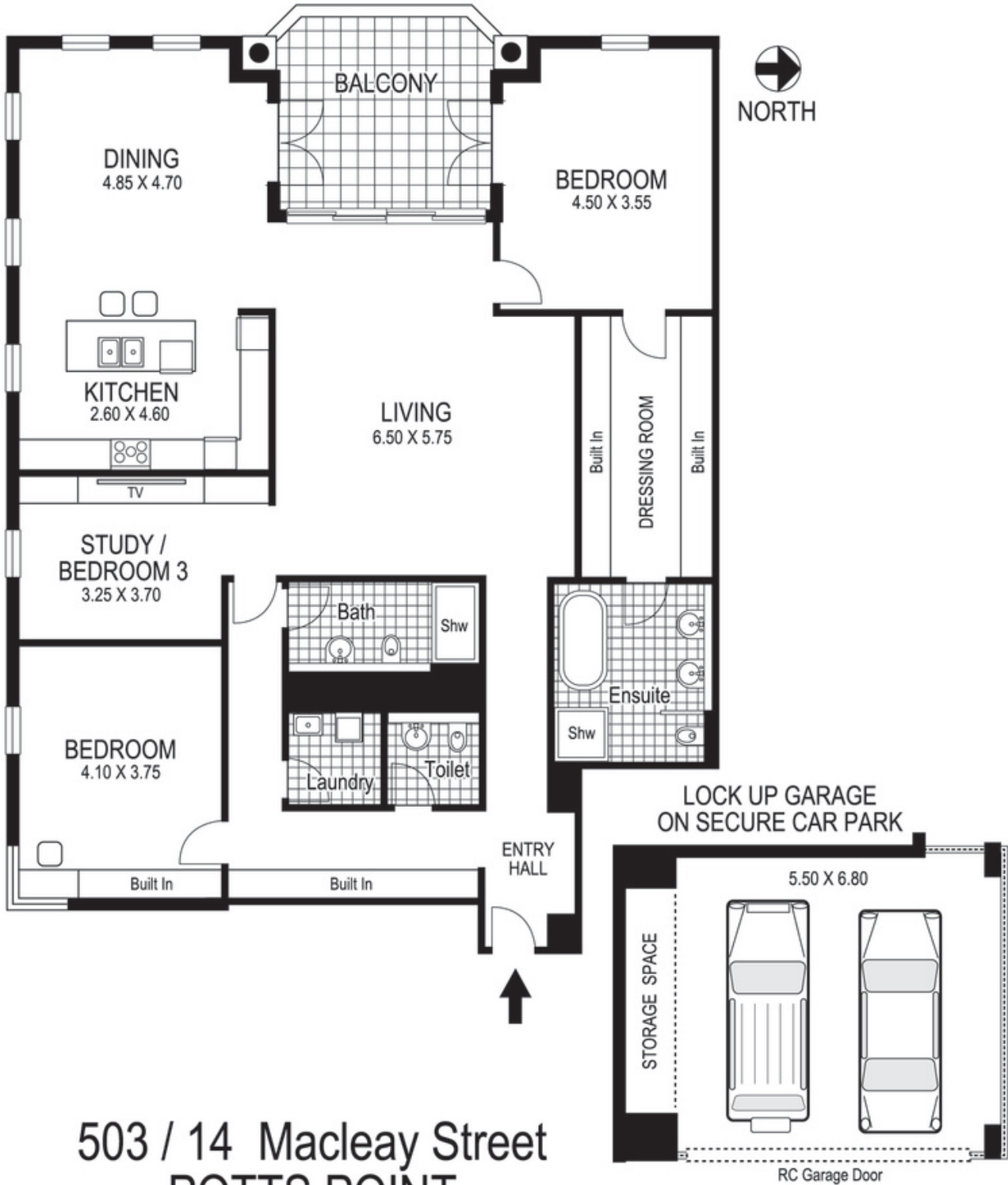
Proudly Richardson&Wrench

Richardson & Wrench Elizabeth Bay / Potts Point
02 8356 2700

Contact:
Jason Boon
0418 671 494

Contact:
Geoff Cox
0418 231 004

R&W | The best reputation
in real estate
Elizabeth Bay/Potts Point



503 / 14 Macleay Street
POTTS POINT
"POMEROY"

Plans shown are for presentation purposes only and are not part of any legal document or title and are subject to errors, omissions, inaccuracies and they should not be used as sole and/or accurate reference for purchasing decision. Interested parties should make their own enquiries using other sources supplied. Dimensions shown on the plans are approximate values in length by width. Illustration by Raoul Isidro 04111 28500.

Every precaution has been taken to establish accuracy of the information in this brochure but does not constitute any representation by the vendor or agent.

R&W