



**13/57 Cowper Wharf Road WOOLLOOMOOLOO, NSW**  
**2 bed | 1 bath | 1 car**



- \* Apartment 13 occupies one of the block's best positions
- \* Spacious open plan living area with northerly balconette
- \* Eat-in granite kitchen with dishwasher, ceramic hob, oven
- \* Kitchen easily serves out to large sunny alfresco terrace
- \* Intimate harbour views from both levels, refreshing coastal breezes
- \* Oversized master bedroom with built-ins and northerly balconette
- \* Double 2nd bedroom with balconette, cathedral ceilings to top floor
- \* Upstairs main bathroom, downstairs guest wc and inter...

[rwebay.com.au/2422992](http://rwebay.com.au/2422992)

Jason Boon 0418 671 494

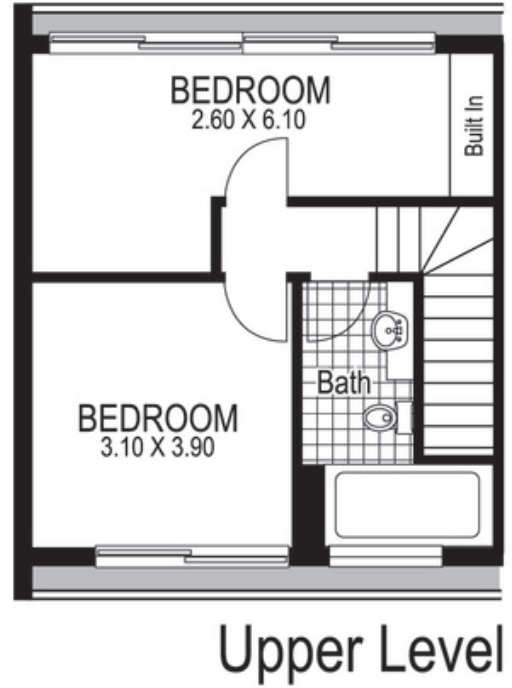
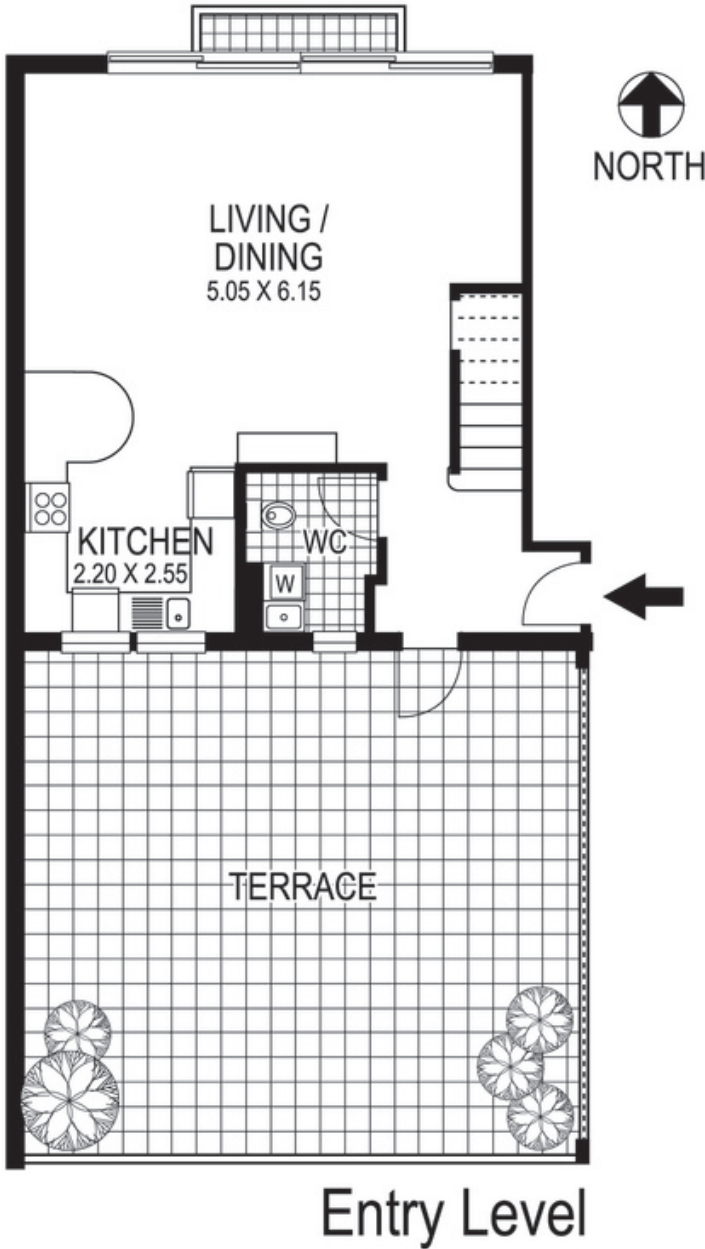
Geoff Cox 0418 231 004

**Proudly Richardson&Wrench**

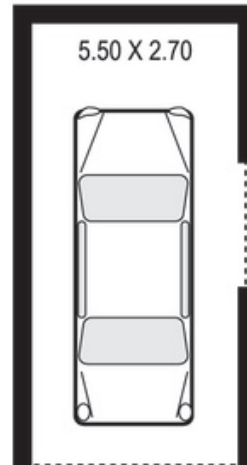
Richardson & Wrench Elizabeth Bay / Potts Point  
 02 8356 2700

Contact:  
Geoff Cox  
0418 231 004

**R&W** | The best reputation  
in real estate  
Elizabeth Bay/Potts Point



SECURITY  
CAR PARKING  
SPACE



13 / 57 Cowper Wharf Roadway  
WOOLLOOMOOLOO

Plans shown are for presentation purposes only and are not part of any legal document or title and are subject to errors, omissions, inaccuracies and they should not be used as sole and/or accurate reference for purchasing decision. Interested parties should make their own enquiries using other sources supplied. Dimensions shown on the plans are approximate values in length by width. Illustration by Raoul Isidro 04111 28500.

Every precaution has been taken to establish accuracy of the information in this brochure but does not constitute any representation by the vendor or agent.

**R&W**