



## 3/13 Onslow Avenue ELIZABETH BAY, NSW

2 bed | 1 bath

Private and tranquil with a sunny north aspect and harbour views to The Heads, this superbly renovated apartment is on the 1st level of 'Meudon', a landmark circa 1928 security building modelled on NYC's Flatiron Building. Spacious and bespoke, it has a large living room, balcony, custom-fitted gas kitchen, main bedroom (with WIR), 2nd bedroom (currently used as dining room), luxury bathroom and internal laundry. With 2 apartments per floor, 'Meudon' has driveway entry via Greenknowe Avenue and pedestrian access to Macleay Street, Crick & Onslow Avenues.

# R&W

[rwebay.com.au/2878353](https://rwebay.com.au/2878353)

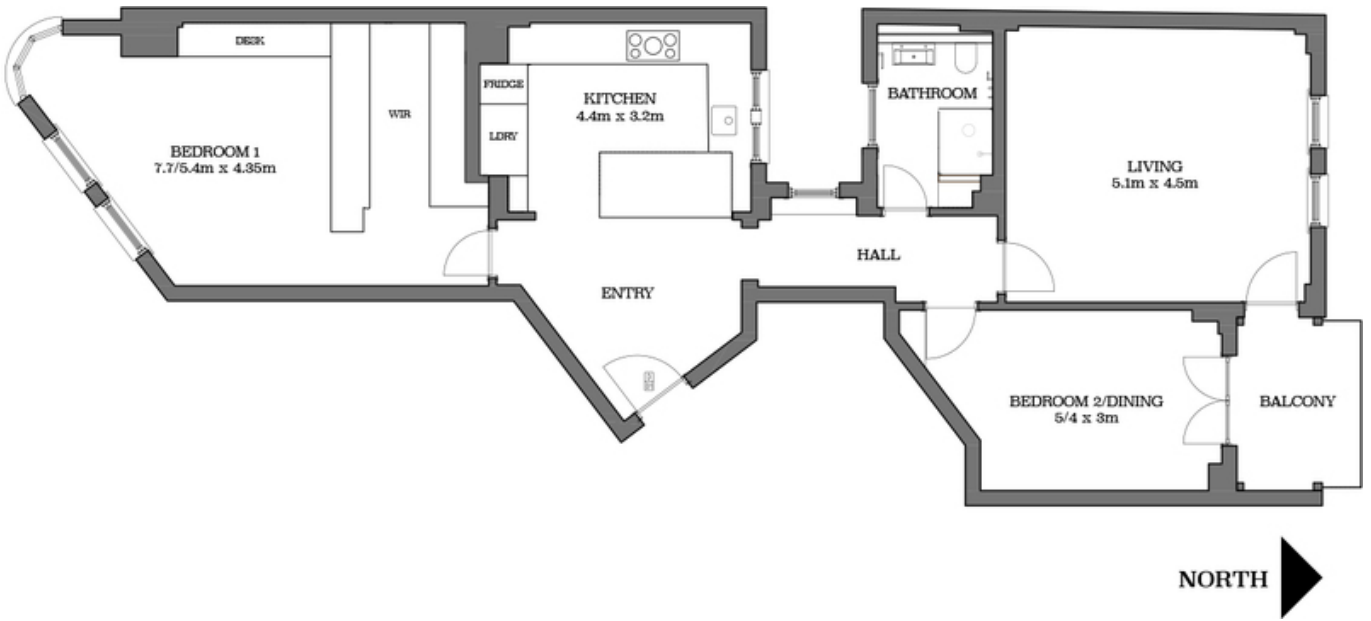
Jason Boon 0418 671 494

Luke McDonnell 0418 844 110

Geoff Cox 0418 231 004

**Proudly Richardson&Wrench**

Richardson & Wrench Elizabeth Bay / Potts Point  
02 8356 2700



Every precaution has been taken to establish accuracy of the information in this brochure but does not constitute any representation by the vendor or agent.

**R&W**