



2002/73 Victoria Street POTTS POINT, NSW

3 bed | 2.5 bath | 2 car

R&W

On the top floor north-east corner of 'Hordern Place', a sought after security building at the leafy northern end of Victoria Street, this ultra spacious apartment has large open-plan living and dining areas flowing to a wraparound balcony with beautiful views across Woolloomooloo Bay and The Domain to the Harbour Bridge and Opera House. Quiet and sunny, it features an excellent layout including a huge master suite with WIR and ensuite. Footsteps to renowned restaurants, cafes and village shopping, the apartment offers an enviable cosmopolitan lifestyle just a short walk from the CBD.

rwebay.com.au/2894323

Andrew Hoggett 0412 208 614

Greg McKinley 0412 044 822

Penny Timothy 0418 546 500

Proudly Richardson&Wrench

Richardson & Wrench Elizabeth Bay / Potts Point
02 8356 2700

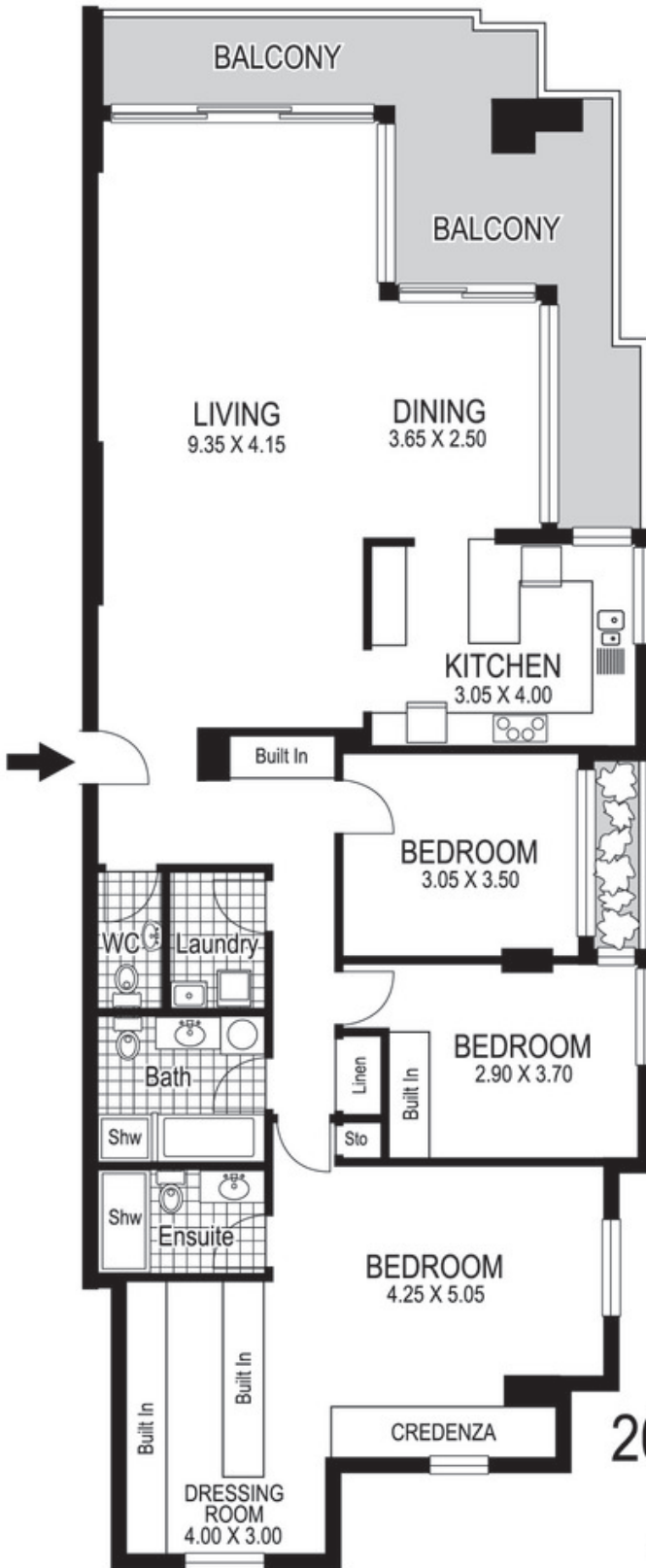


R&W | The best reputation
in real estate
Elizabeth Bay/Potts Point

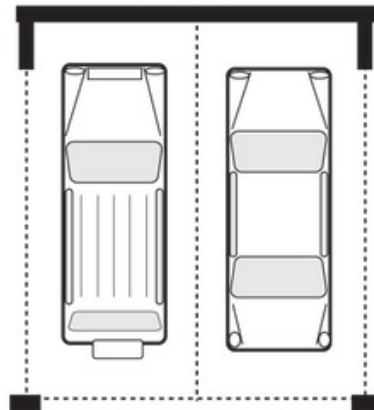
Contact:
Andrew Hoggett
0412 208 614

Contact:
Greg McKinley
0412 044 822

Contact:
Penny Timothy
0418 546 500



SECURITY
CAR PARKING
SPACE
5.50 X 5.00



2002 / 73 Victoria Street
POTTS POINT
"HORDERN PLACE"

Plans shown are for presentation purposes only and are not part of any legal document or title and are subject to errors, omissions, inaccuracies and they should not be used as sole and/or accurate reference for purchasing decision. Interested parties should make their own enquiries using other sources supplied. Dimensions shown on the plans are approximate values in length by width. Illustration by Raoul Isidro 04111 28500.

Every precaution has been taken to establish accuracy of the information in this brochure but does not constitute any representation by the vendor or agent.

R&W