



## 21/21c Billyard Avenue ELIZABETH BAY, NSW

1 bed | 1 bath | 1 car

**R&W**

- \* Security undercover carspace
- \* Dual access from both Billyard and Onslow Avenues
- \* 2sqm of storage space on title
- \* Sizeable balcony perfect for al fresco dining
- \* Updated bathroom and kitchen with Smeg appliances
- \* Freshly painted with floorboard finishes throughout
- \* Neutral window blinds and modern lighting throughout
- \* Built-in storage in the living room and bedroom
- \* Recently updated security building on an exclusive avenue

[rwebay.com.au/3008373](http://rwebay.com.au/3008373)

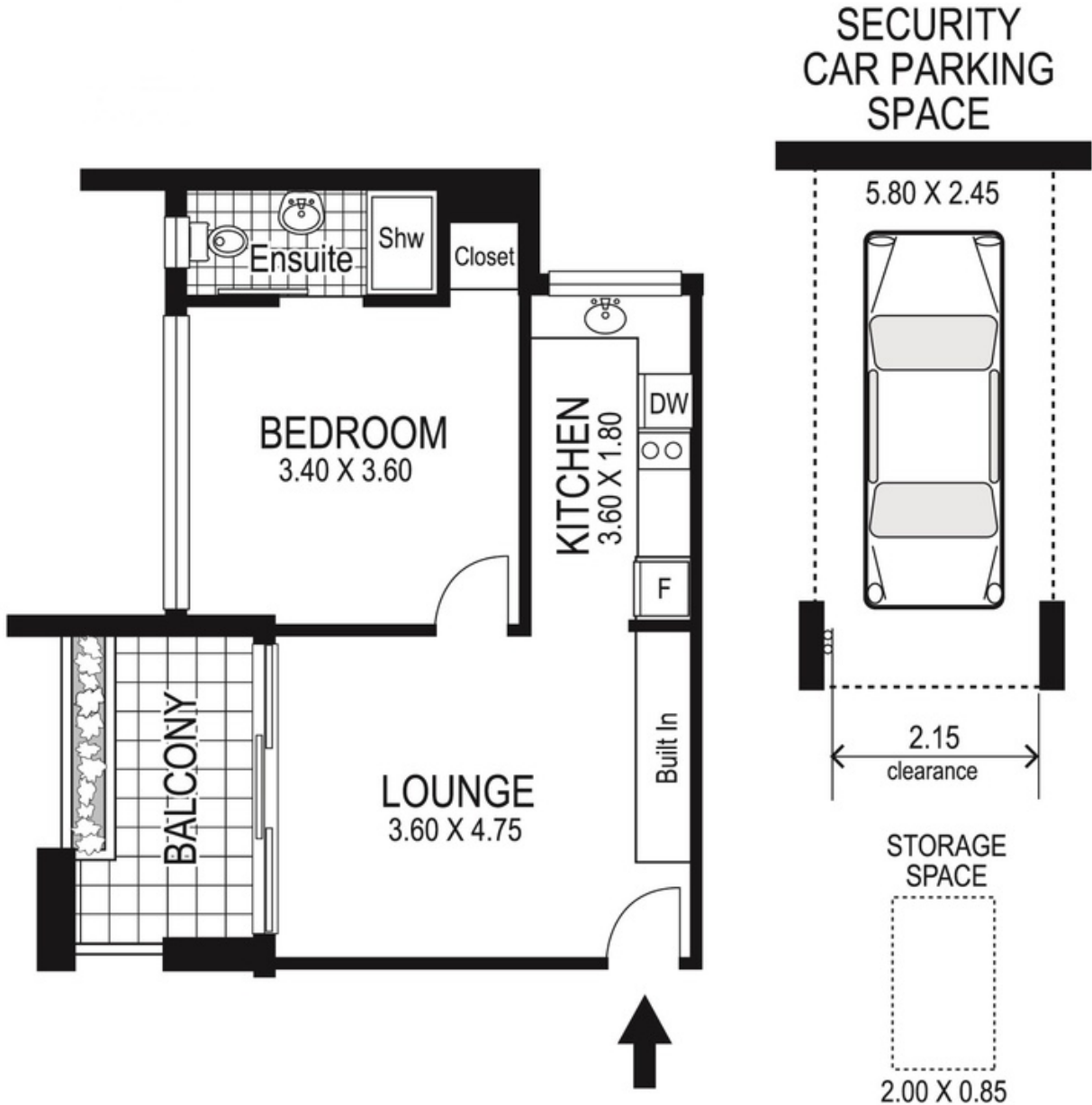
Penny Timothy 0418 546 500

**Proudly Richardson&Wrench**

Richardson & Wrench Elizabeth Bay / Potts Point  
02 8356 2700

Contact:  
Penny Timothy  
0418 546 500

**R&W** | The best reputation  
in real estate  
Elizabeth Bay/Potts Point



21 / 21c Billyard Avenue  
ELIZABETH BAY  
*"THE ELIZA"*

Plans shown are for presentation purposes only and are not part of any legal document or title and are subject to errors, omissions, inaccuracies and they should not be used as sole and/or accurate reference for purchasing decision. Interested parties should make their own enquiries using other sources supplied. Dimensions shown on the plans are approximate values in length by width. Illustration by Raoul Isidro 04111 28500.

Every precaution has been taken to establish accuracy of the information in this brochure but does not constitute any representation by the vendor or agent.

**R&W**