



234 Dowling Street WOOLLOOMOOLOO, NSW

3 bed | 3 bath | 2 car

R&W

With no detail missed in the creation of an exceptional...

rwebay.com.au/3047272

Jason Boon 0418 671 494

Geoff Cox 0418 231 004

Proudly Richardson&Wrench

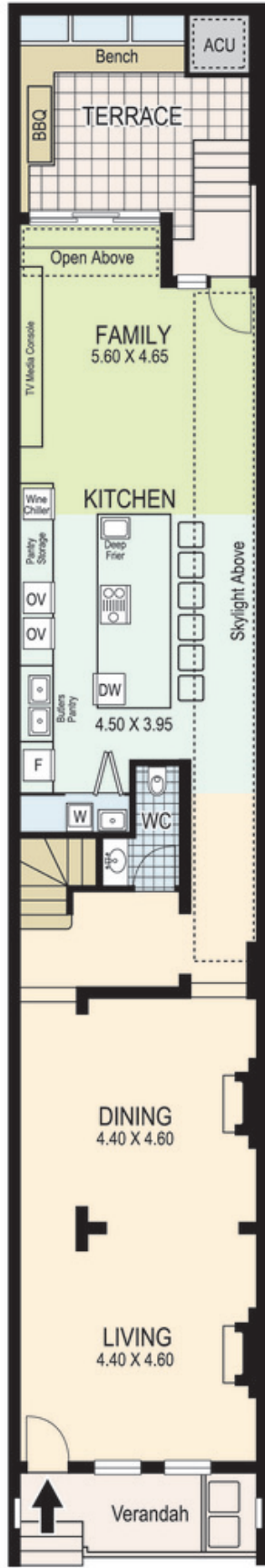
Richardson & Wrench Elizabeth Bay / Potts Point
02 8356 2700

R&W

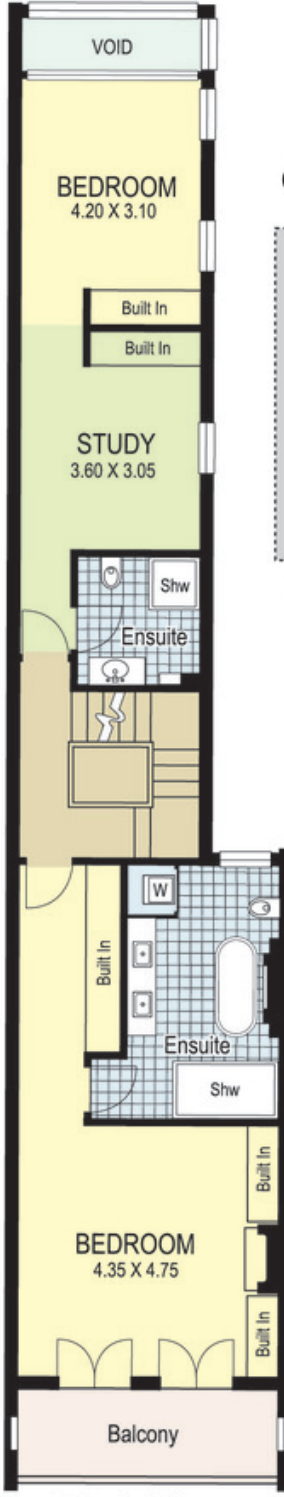
Elizabeth Bay / Potts Point
8356 2700

Contact:
Jason Boon
0418 671 494

Contact:
Geoff Cox
0418 231 004



Ground Floor

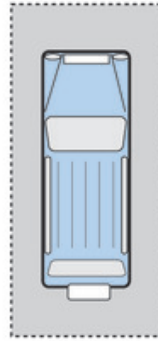


First Floor



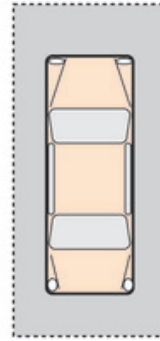
Second Floor

SECURITY
CAR PARKING
SPACE



REFER TO DETAILS
OF PARKING LAYOUT
ON STRATA PLAN

SECURITY
CAR PARKING
SPACE



REFER TO DETAILS
OF PARKING LAYOUT
ON STRATA PLAN

234 Dowling Street WOOLLOOMOOLOO

Plans shown are for presentation purposes only and are not part of any legal document or title and are subject to errors, omissions inaccuracies and they should not be used as the sole and/or accurate reference for purchasing decision. Interested parties should make their own inquiries using other sources supplied. Dimensions in length and width are approximate. Illustration by Raoul Isidro 0411128500

Every precaution has been taken to establish accuracy of the information in this brochure but does not constitute any representation by the vendor or agent.

R&W