



55 Victoria Street POTTS POINT, NSW

6 bed | 3 bath | 1 car

Perched high on the ridge of Potts Point in an incredible position overlooking the city and harbour, this landmark house affords a stunning opportunity in a superb location. An iconic freestanding residence ? adjacent to the historic McElhone Stairs ? it offers a multitude of possibilities, with a large main home augmented by two other currently separate self-contained premises.

The main residence features a sweeping high-ceilinged l...

R&W

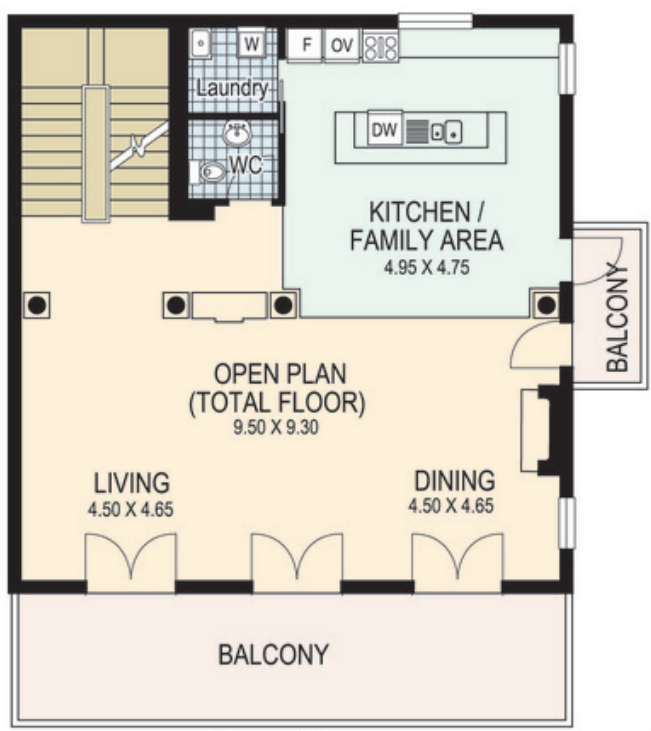
rwebay.com.au/3055961

Jason Boon 0418 671 494

Geoff Cox 0418 231 004

Proudly Richardson&Wrench

Richardson & Wrench Elizabeth Bay / Potts Point
02 8356 2700



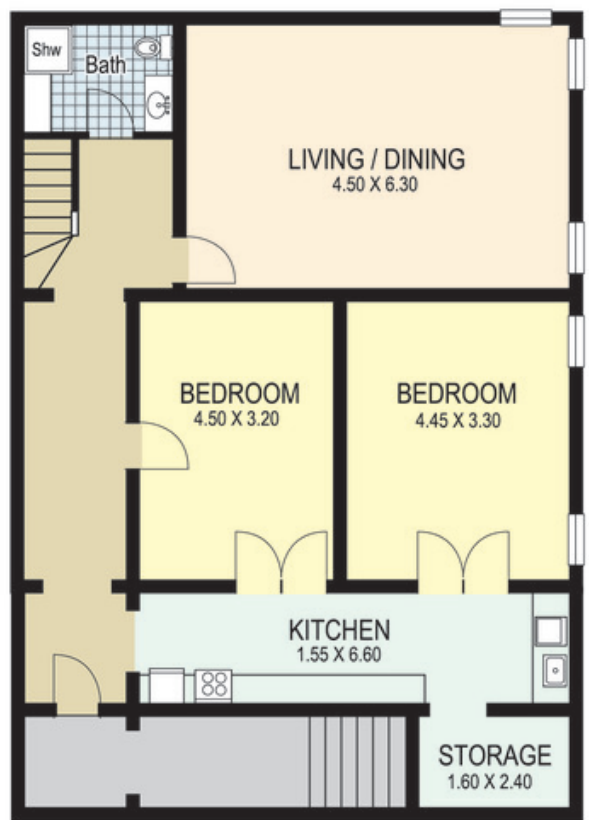
First Floor



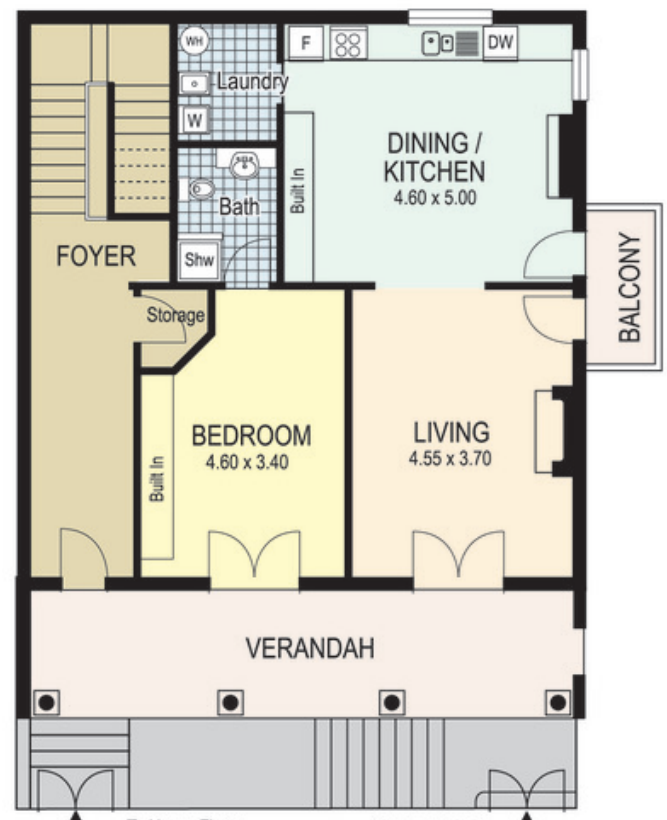
Second Floor

NORTH

Plans shown are for presentation purposes only and are not part of any legal document or title and are subject to errors, omissions, inaccuracies and they should not be used as sole and/or accurate reference for purchasing decision. Interested parties should make their own enquiries using other sources supplied. Dimensions shown on the plans are approximate values in length by width. Illustration by Raoul Isidro 04111 28500.



Lower Level



Ground Floor

55 Victoria Street POTTS POINT

Every precaution has been taken to establish accuracy of the information in this brochure but does not constitute any representation by the vendor or agent.