



80 Brougham Street POTTS POINT, NSW

3 bed | 2 bath | 2 car

Perfectly positioned and cleverly re-designed, this 3-bedroom Potts Point terrace is a real city-side gem. With views to the CBD skyline, it is a pleasing combination of heritage touches with a modern architectural update. Set over two levels ? with the key inclusion of parking for 2 cars ? its high ceilings and sunny courtyard give it a bright, airy atmosphere, making it an ideal space for family living. Two bathrooms add great convenience, a 2nd-storey balcony with wrought iron railings offers a pleasing hint of history and a cute front garden creates a cosy entry. With fine schools, transport and dining all nearby, it stands as a delightful family abode in a highly sought-after locale.

...

R&W

rwebay.com.au/3171137

R&W Leasing 02 8356 2700

Joss Reid 0414 662 391

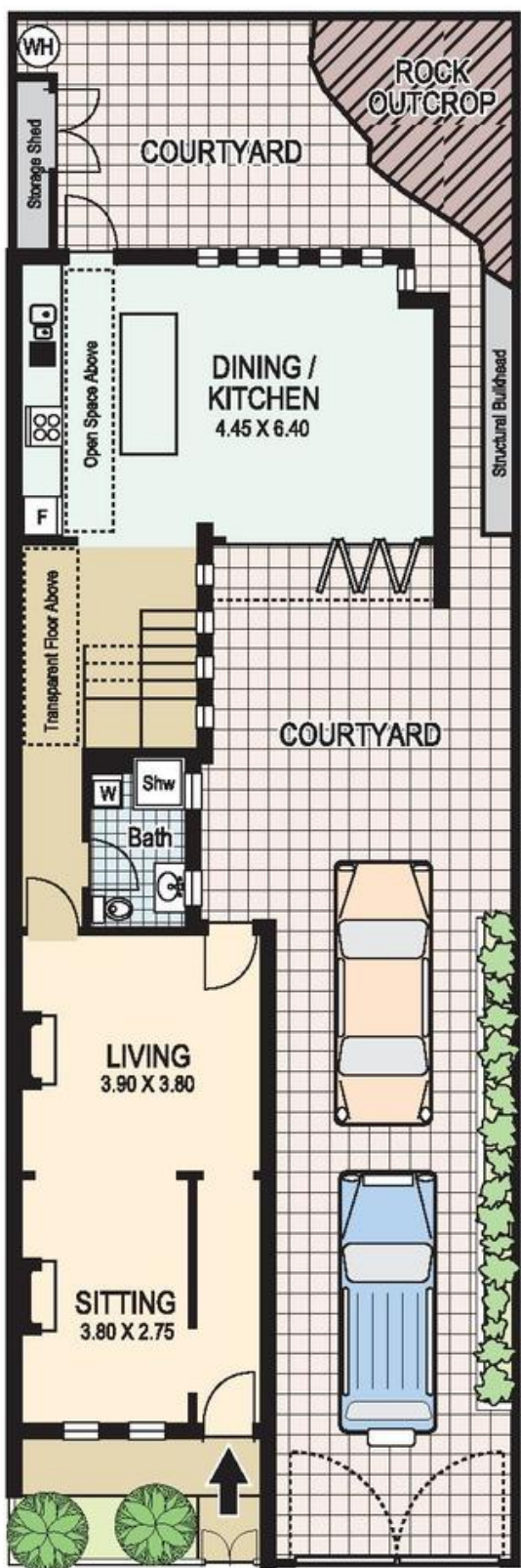
Proudly Richardson&Wrench

Richardson & Wrench Elizabeth Bay / Potts Point
02 8356 2700

R&W The best reputation in real estate
Elizabeth Bay/Potts Point

Contact:
Jason Boon
 0418 671 494

Contact:
Geoff Cox
 0418 231 004



Ground Floor



First Floor

Plans shown are for presentation purposes only and are not part of any legal document or title and are subject to errors, omissions, inaccuracies and they should not be used as sole and/or accurate reference for purchasing decision. Interested parties should make their own enquiries using other sources supplied. Dimensions shown on the plans are approximate values in length by width. Illustration by Raouf Isidro 04111 28600.

80 Brougham Street POTTS POINT

Every precaution has been taken to establish accuracy of the information in this brochure but does not constitute any representation by the vendor or agent.

R&W