



## 3/7 Clement Street RUSHCUTTERS BAY, NSW

3 bed | 2 bath | 2 car

**R&W**

- 3 bedrooms + study
- 2 bathrooms, parking for 2 cars
- Exceptional attention to detail and bespoke finishes
- Approx 220sqm, house-like proportions
- Wonderful enclosed balcony providing an exceptional space
- Heritage touches and high ceilings
- Massive renovated kitchen/dining area
- European kitchen appliances, incl. steam oven and Teppanyaki grill

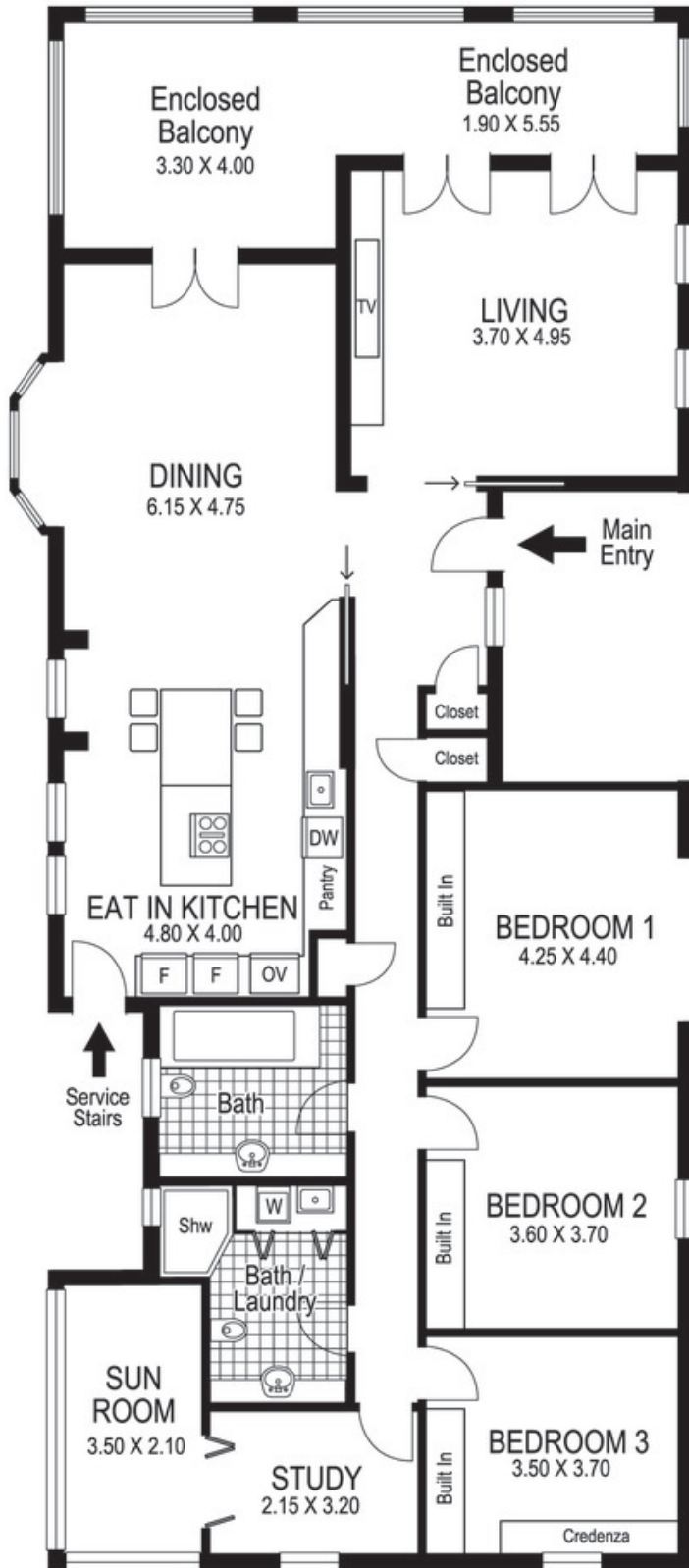
[rwebay.com.au/3173612](http://rwebay.com.au/3173612)

Jason Boon 0418 671 494

Geoff Cox 0418 231 004

**Proudly Richardson&Wrench**

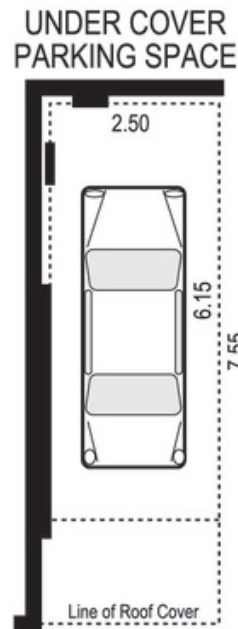
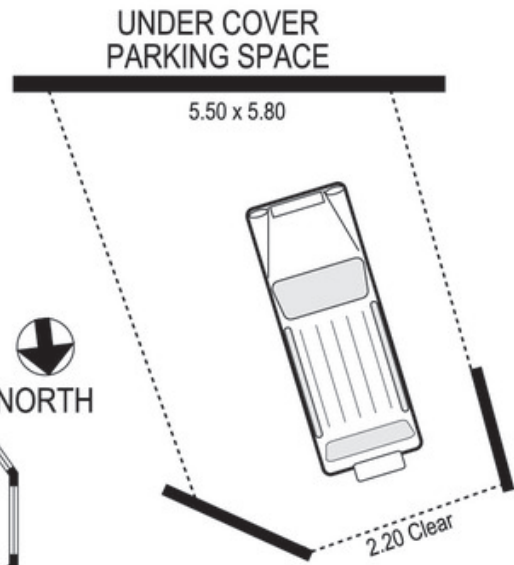
Richardson & Wrench Elizabeth Bay / Potts Point  
02 8356 2700



Elizabeth Bay / Potts Point  
8356 2700

Contact:  
Jason Boon  
0418 671 494

Contact:  
Geoff Cox  
0418 231 004



## 3 / 7 Clement Street RUSHCUTTERS BAY "AVARA HALL"

Plans shown are for presentation purposes only and are not part of any legal document or title and are subject to errors, omissions inaccuracies and they should not be used as the sole and/or accurate reference for purchasing decision. Interested parties should make their own inquiries using other sources supplied. Dimensions in length and width are approximate. Illustration by Raoul Isidro 0411128500

Every precaution has been taken to establish accuracy of the information in this brochure but does not constitute any representation by the vendor or agent.

