



13/10 Wylde Street POTTS POINT, NSW

3 bed | 2 bath | 2 car

- 3 bedrooms, 2 finely-appointed bathrooms
- Secure parking for 2 cars
- Sun-drenched north facing apartment
- Terrific views all the way to South Head
- Award-winning residential building
- Massive balcony/outdoor entertaining space
- Large lounge/dining/living area
- Kitchen with Miele appliances and stone benches
- Herringbone parquet floors in living areas, carpeted bedrooms

R&W

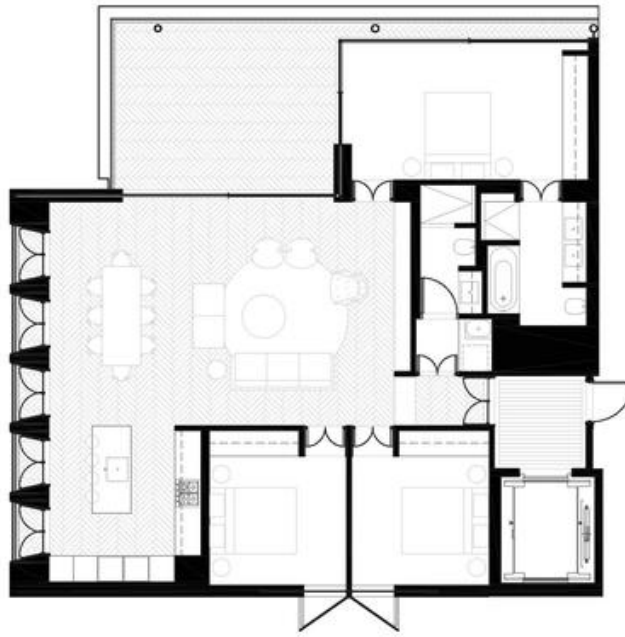
rwebay.com.au/3177429

Jason Boon 0418 671 494

Geoff Cox 0418 231 004

Proudly Richardson&Wrench

Richardson & Wrench Elizabeth Bay / Potts Point
02 8356 2700



LEVEL 4

Internal: 123m²
External: 27m²
Parking: 30m²
Storage: 11m²
Total: 191m²



All dimensions on this floor plan are subject to confirmation by survey on completion of construction. Refer to the specifications for details of fittings, fixtures and specifications.
The furnishings shown on this floor plan are not included in the sale. Approximate furniture and other items are shown for illustrative purposes only and are not included in the dimensions.

APARTMENT 13