



## 1803/73 Victoria Street POTTS POINT, NSW

2 bed | 1 bath | 1 car

**R&W**

- \* Perfect city home or easy investment
- \* Secure building with on site manager and pool
- \* Located high on the ridge of Potts Point
- \* East-facing with great district views & harbor cameos
- \* Close to St Vincents College, transport, shopping and all amenities

Outgoings:

[rwebay.com.au/3193011](http://rwebay.com.au/3193011)

Greg McKinley 0412 044 822

Penny Timothy 0418 546 500

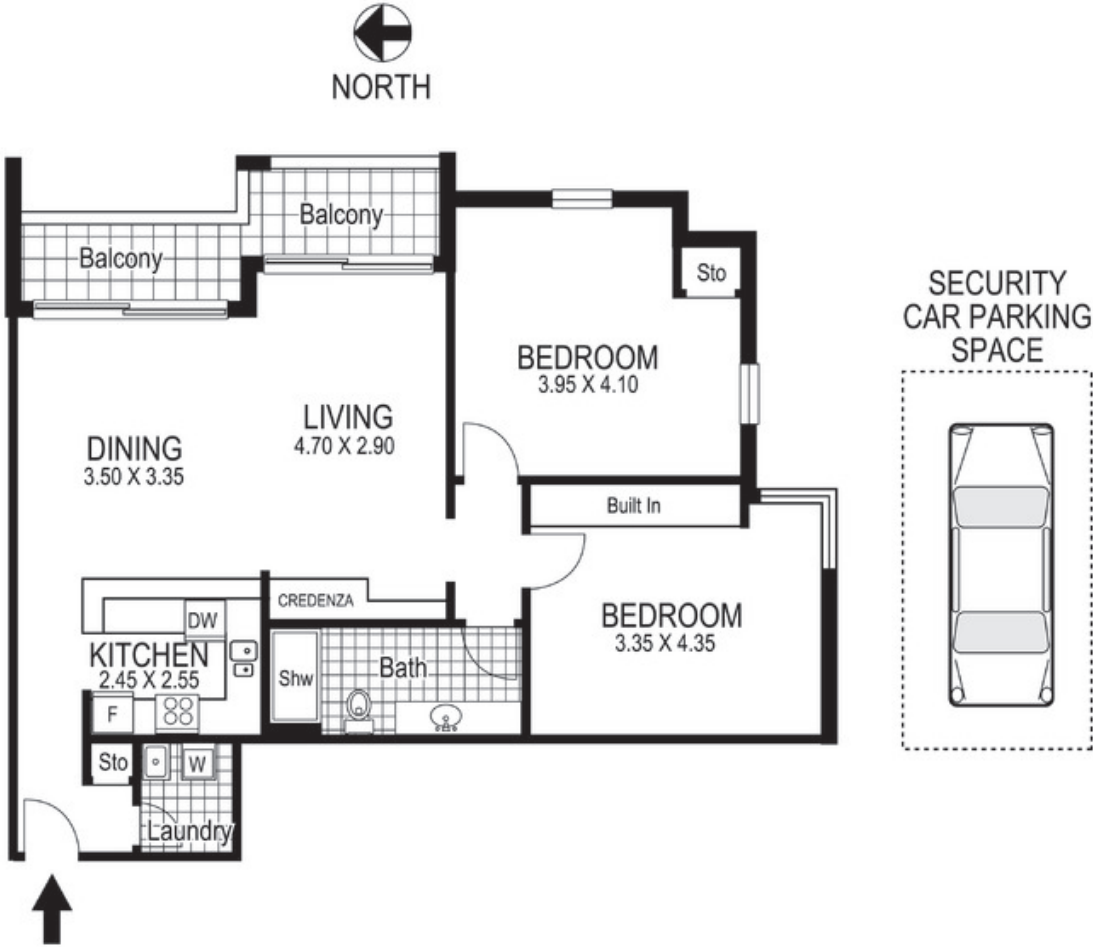
Andrew Hoggett 0412 208 614

**Proudly Richardson&Wrench**

Richardson & Wrench Elizabeth Bay / Potts Point  
02 8356 2700



Elizabeth Bay / Potts Point  
8356 2700



# 1803 / 73 Victoria Street POTTS POINT "HORDERN PLACE"

Plans shown are for presentation purposes only and are not part of any legal document or title and are subject to errors, omissions inaccuracies and they should not be used as the sole and/or accurate reference for purchasing decision. Interested parties should make their own inquiries using other sources supplied. Dimensions in length and width are approximate. Illustration by Raoul Isidro 0411128500

Every precaution has been taken to establish accuracy of the information in this brochure but does not constitute any representation by the vendor or agent.

