



702/437 Bourke Street SURRY HILLS, NSW

3 bed | 2 bath | 2 car

R&W

Prestigiously set within the renowned St Margaret's development and flowing over two levels at the top of the ultra exclusive 'Alba', this breathtaking residence is a home of timeless refinement and undeniable sophistication. Opening to the light of a due northern perspective and soothed by cooling cross breezes, panoramic views stretch across the city skyline, Harbour Bridge and Opera House to Botany Bay and the top of the Wollongong Escarpment.

Water: \$174.21pq

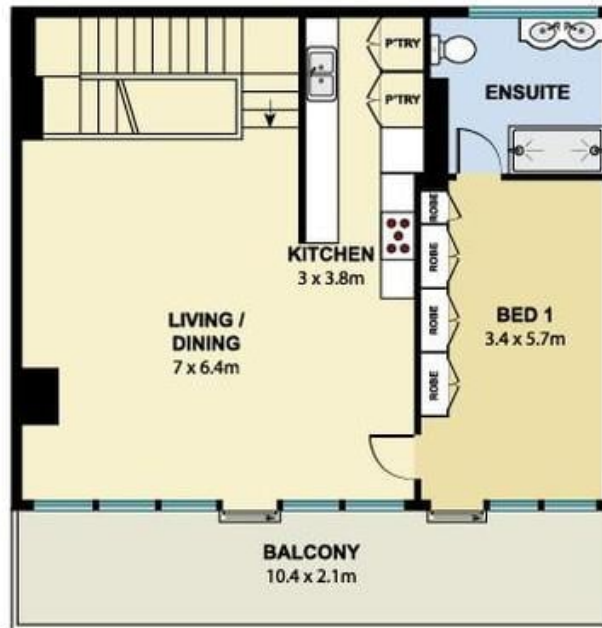
rwebay.com.au/3293900

Jason Boon 0418 671 494

Geoff Cox 0418 231 004

Proudly Richardson&Wrench

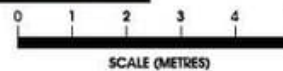
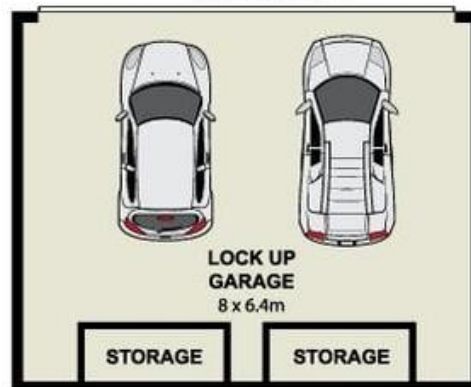
Richardson & Wrench Elizabeth Bay / Potts Point
02 8356 2700



Upper Floor



Seventh Floor



702/437 Bourke Street, Surry Hills

Scale in metres. Indicative only. Dimensions are approximate. All information contained here in is gathered from sources we believe to be reliable. However we cannot guarantee its accuracy and interested persons should rely on their own enquiries.