



## 15A Greenknowe Avenue ELIZABETH BAY, NSW

3 bed | 3 bath | 2 car

**R&W**

- \* Peaceful abode with sunny north-facing aspect
- \* Secure underground lock-up garage with storage and internal entry
- \* Full internal laundry
- \* Linen closet, pantry and storage space
- \* Versatile floorplan
- \* Privacy and convenience
- \* High ceilings, downlights and fully carpeted throughout
- \* Security alarm and air-conditioning

[rwebay.com.au/3294090](http://rwebay.com.au/3294090)

Jason Boon 0418 671 494

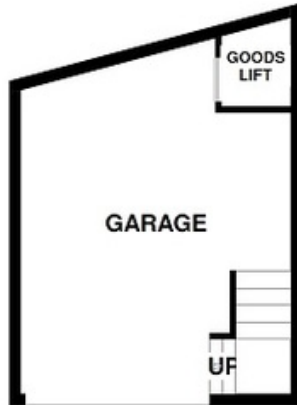
Geoff Cox 0418 231 004

**Proudly Richardson&Wrench**

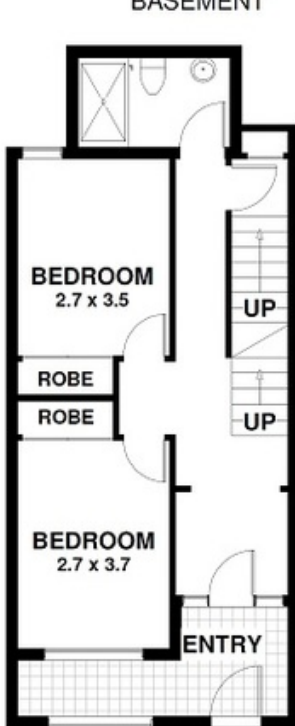
Richardson & Wrench Elizabeth Bay / Potts Point  
02 8356 2700

# R&W

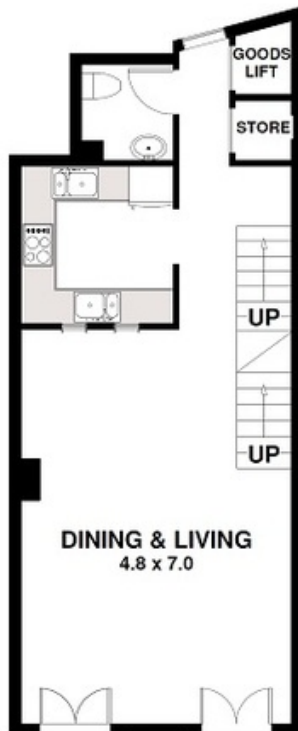
Elizabeth Bay / Potts Point  
8356 2700



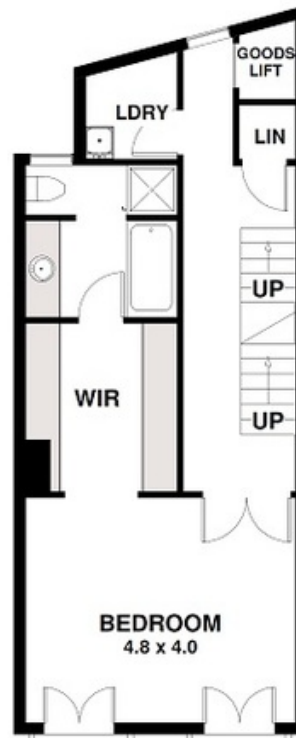
BASEMENT



GROUND FLOOR



FIRST FLOOR



SECOND FLOOR



THIRD FLOOR

## 15A Greenknowe Avenue ELIZABETH BAY

Plans shown are for presentation purposes only and are not part of any legal document or title and are subject to errors, omissions, inaccuracies and they should not be used as sole and/or accurate reference for purchasing decision. Interested parties should make their own enquiries using other sources supplied. Dimensions shown on the plans are approximate values in length by width.

# R&W