



## 2/2 Elizabeth Bay Crescent ELIZABETH BAY, NSW

3 bed | 2 bath

**R&W**

- Generous 181sqm floorspace
- Tranquil views across Rushcutters Bay
- Superb terrace with grand archways
- Light filled. Soaring high ceilings. Plenty of storage
- Bathroom with separate shower + full bath, 2nd bathroom with shower
- Gas fireplace and artisan wooden floors
- Potential for a smart contemporary redesign
- Communal pool and lawn area, with jetty for easy harbour taxi access
- Extremely quiet building, immaculately maintained ...

[rwebay.com.au/3452164](http://rwebay.com.au/3452164)

Greg McKinley 0412 044 822

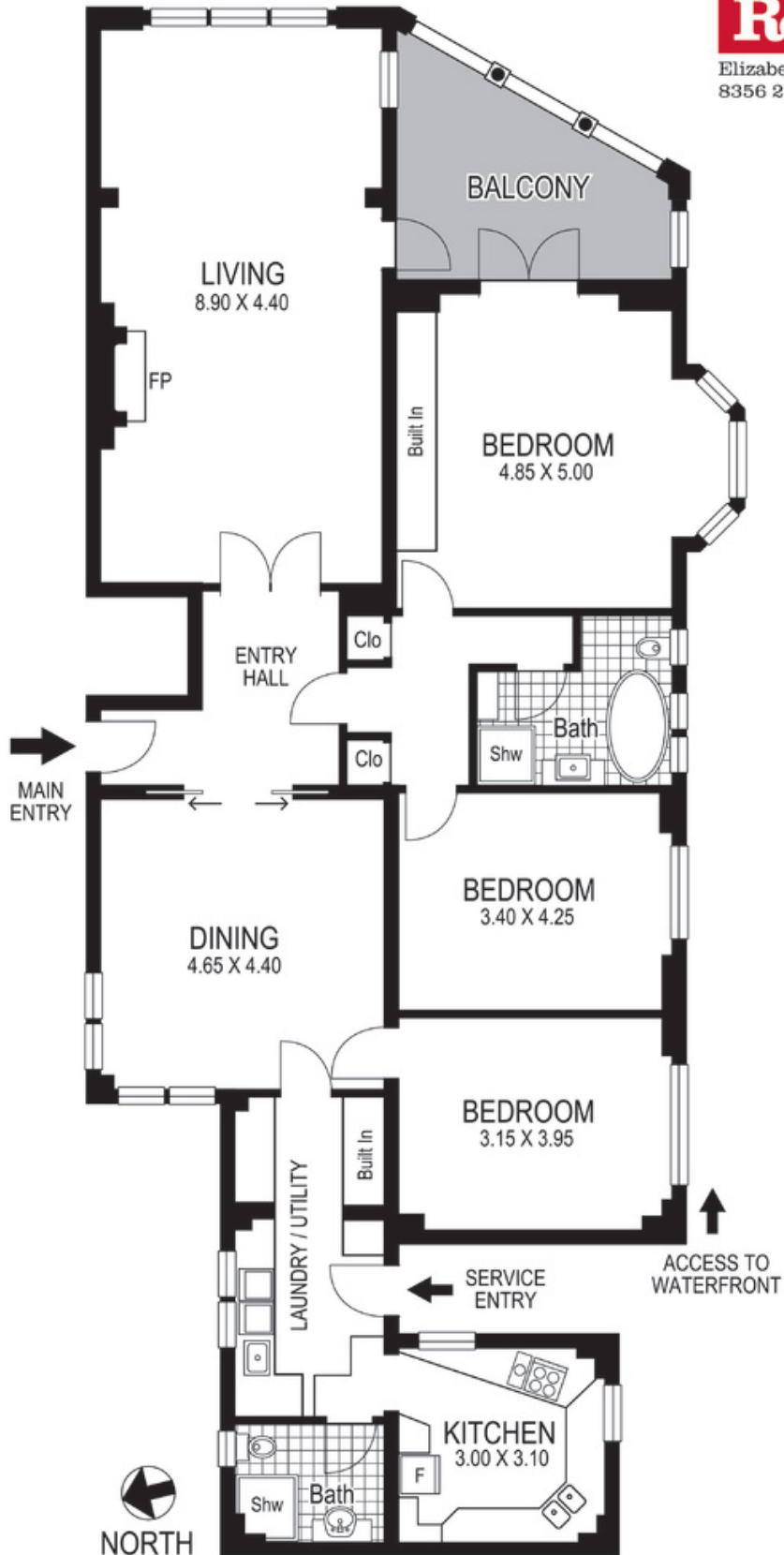
Jason Boon 0418 671 494

**Proudly Richardson&Wrench**

Richardson & Wrench Elizabeth Bay / Potts Point  
02 8356 2700

**R&W**

Elizabeth Bay / Potts Point  
8356 2700



## 2 / 2 Elizabeth Bay Crescent ELIZABETH BAY "BEVERLEY HALL"

Plans shown are for presentation purposes only and are not part of any legal document or title and are subject to errors, omissions inaccuracies and they should not be used as the sole and/or accurate reference for purchasing decision. Interested parties should make their own inquiries using other sources supplied. Dimensions in length and width are approximate. Illustration by Raoul Isidro 0411128500

Every precaution has been taken to establish accuracy of the information in this brochure but does not constitute any representation by the vendor or agent.

**R&W**