



32/101 Macleay Street POTTS POINT, NSW

1 bed | 1 bath

Light-filled and unexpectedly spacious with a separate bed alcove, this city pad is quietly set well back and hidden from the cosmopolitan streetscape, enjoying elevated glimpses of some of Sydney's landmarks. The airy and open plan layout is ideal for the 1st home buyer, astute investor or someone looking for a lock up and go apartment near the city.

- * Quiet location at the rear of the building
- * Airy apartment with great cross flow
- * Separate kitchen with scope to add value

R&W

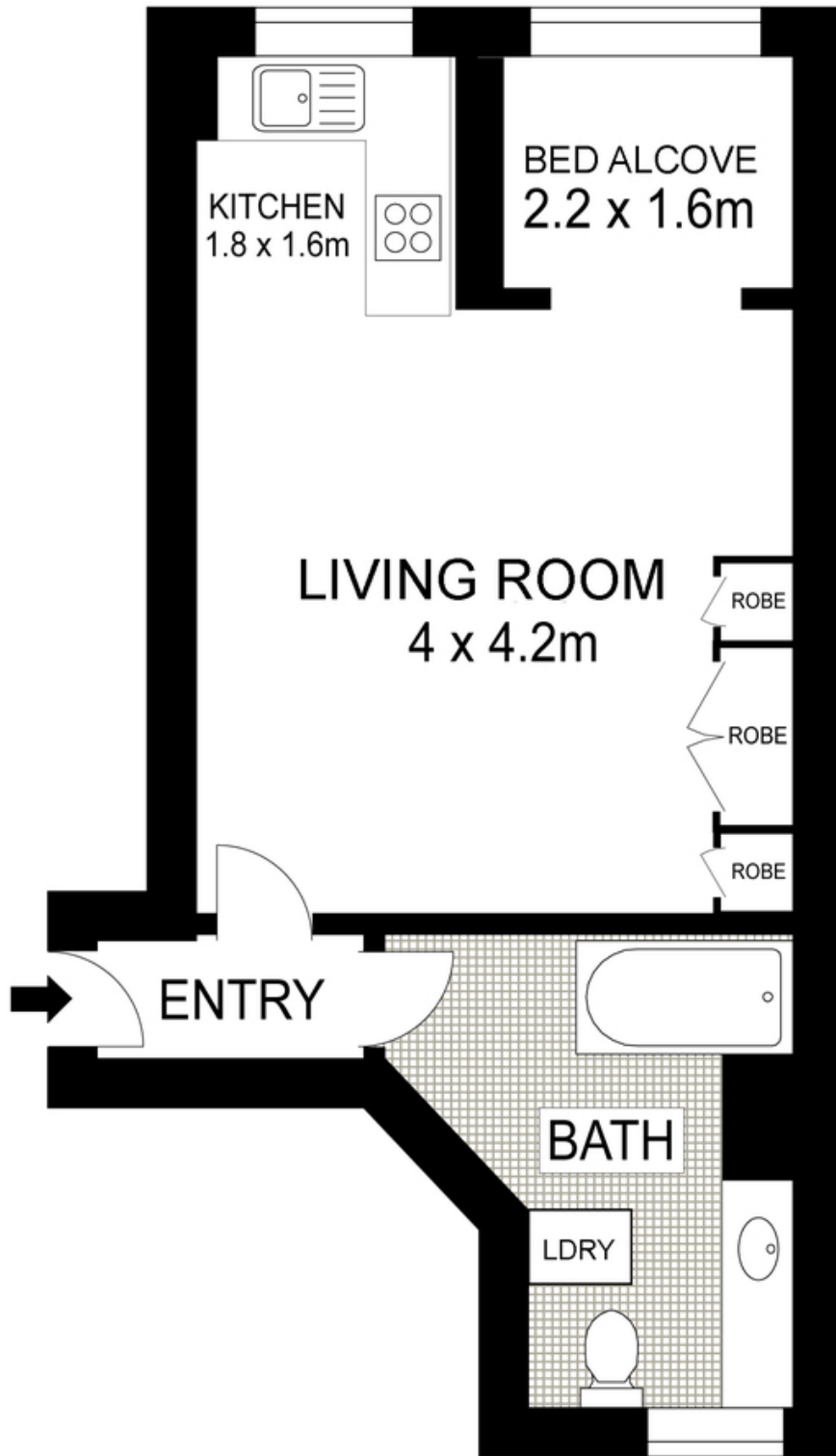
rwebay.com.au/3452283

Angelo Bouras 0401 658 653

Penny Timothy 0418 546 500

Proudly Richardson&Wrench

Richardson & Wrench Elizabeth Bay / Potts Point
02 8356 2700



LEVEL THREE



Plans shown are for presentation purposes only and are not part of any legal document or title. They are subject to errors, omissions, inaccuracies and should not be used as a sole and accurate reference. Interested parties should make their own inquiries using independent sources.

32/101 Macleay Street, Potts Point



Every precaution has been taken to establish accuracy of the information in this brochure but does not constitute any representation by the vendor or agent.

