

805/2-6 Birtley Place ELIZABETH BAY, NSW

1 bed | 1 bath | 1 car

R&W

- * Spacious living/dining room flows out to balcony
- * Granite kitchen with stainless steel appliances
- * Kitchen enjoys large servery to living/dining room
- * Double bedroom with built-in and balcony access
- * Fully tiled bathroom, bathtub and fine finishes
- * Reverse-cycle air conditioning, crisp white walls
- * Secure underground car space with lift access

Outgoings:

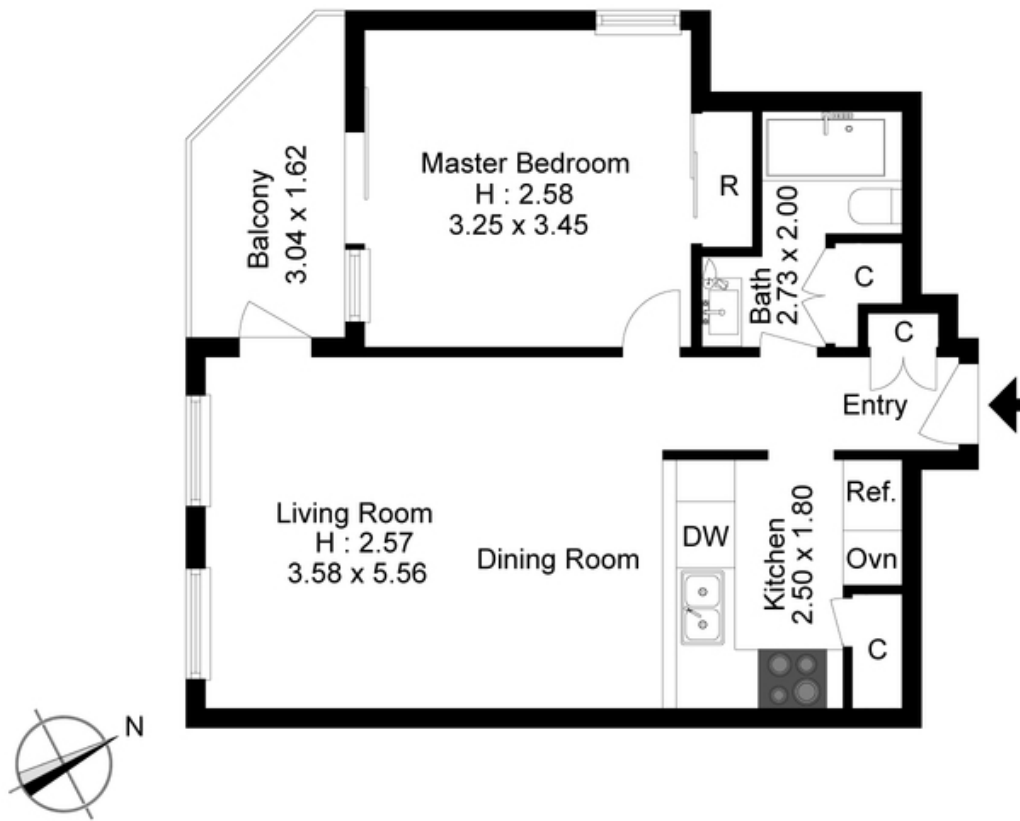
rwebay.com.au/3453338

Luke McDonnell 0418 844 110

Penny Timothy 0418 546 500

Proudly Richardson&Wrench

Richardson & Wrench Elizabeth Bay / Potts Point
02 8356 2700



This floorplan is indicative and the scale is an approximate. Scale in metres.

Produced by DIAKRIT