



## 602/12 Macleay Street POTTS POINT, NSW

1 bed | 1 bath

# R&W

- \* Designed exclusively by the architectural practice of E.C.Pitt & C.C.Phillips
- \* Constructed in 1939 by Harold Percival Christmas, founder of Woolworths
- \* Vast formal lounge room with gas fireplace and separate dining space
- \* Lovely balcony with leafy outlooks as well as views to the city skyline
- \* Classic separate galley kitchen with gas stainless steel appliances
- \* Generous light-filled bedroom with walk-in robe and c...

[rwebay.com.au/3464109](http://rwebay.com.au/3464109)

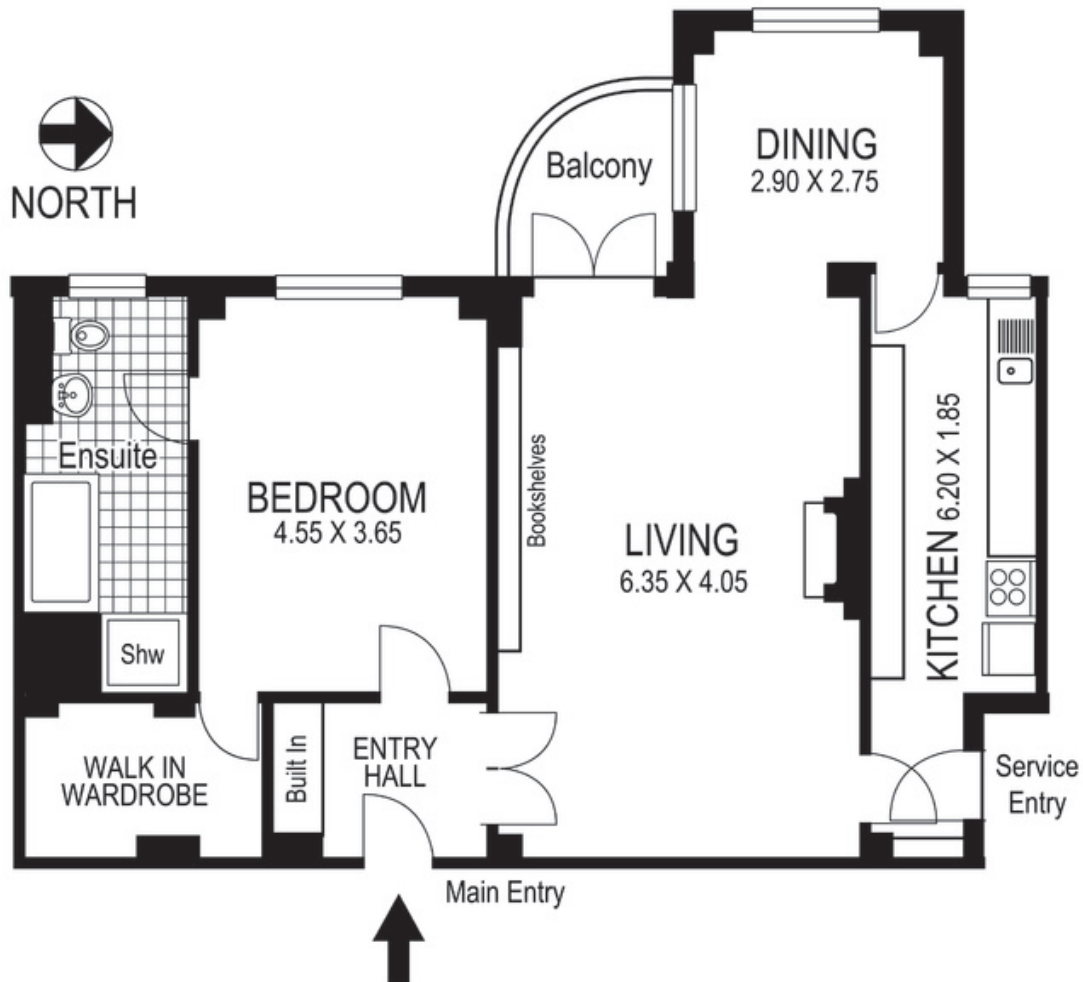
Greg McKinley 0412 044 822

Penny Timothy 0418 546 500

Andrew Hoggett 0412 208 614

**Proudly Richardson&Wrench**

Richardson & Wrench Elizabeth Bay / Potts Point  
02 8356 2700



602 / 12 Macleay Street  
POTTS POINT  
*"MACLEAY - REGIS"*

Plans shown are for presentation purposes only and are not part of any legal document or title and are subject to errors, omissions inaccuracies and they should not be used as the sole and/or accurate reference for purchasing decision. Interested parties should make their own inquiries using other sources supplied. Dimensions in length and width are approximate. Illustration by Raoul Isidro 0411128500