



**1501/3 Kings Cross Road RUSHCUTTERS BAY, NSW**  
**2 bed | 2 bath | 2 car**



- \* Spacious open plan living/dining room with generous built-in study area
- \* Wide alfresco entertaining terrace soaking up spectacular Sydney vistas
- \* Open plan gas kitchen with stainless steel bench tops and Smeg appliances
- \* Generous bedrooms with built-in/walk-in robes and access to rear terrace
- \* Stylish fully tiled bathrooms, ensuite with bathtub, separate internal laundry
- \* Heated pool & gymnasium, 24 hour concierge...

[rwebay.com.au/3467758](http://rwebay.com.au/3467758)

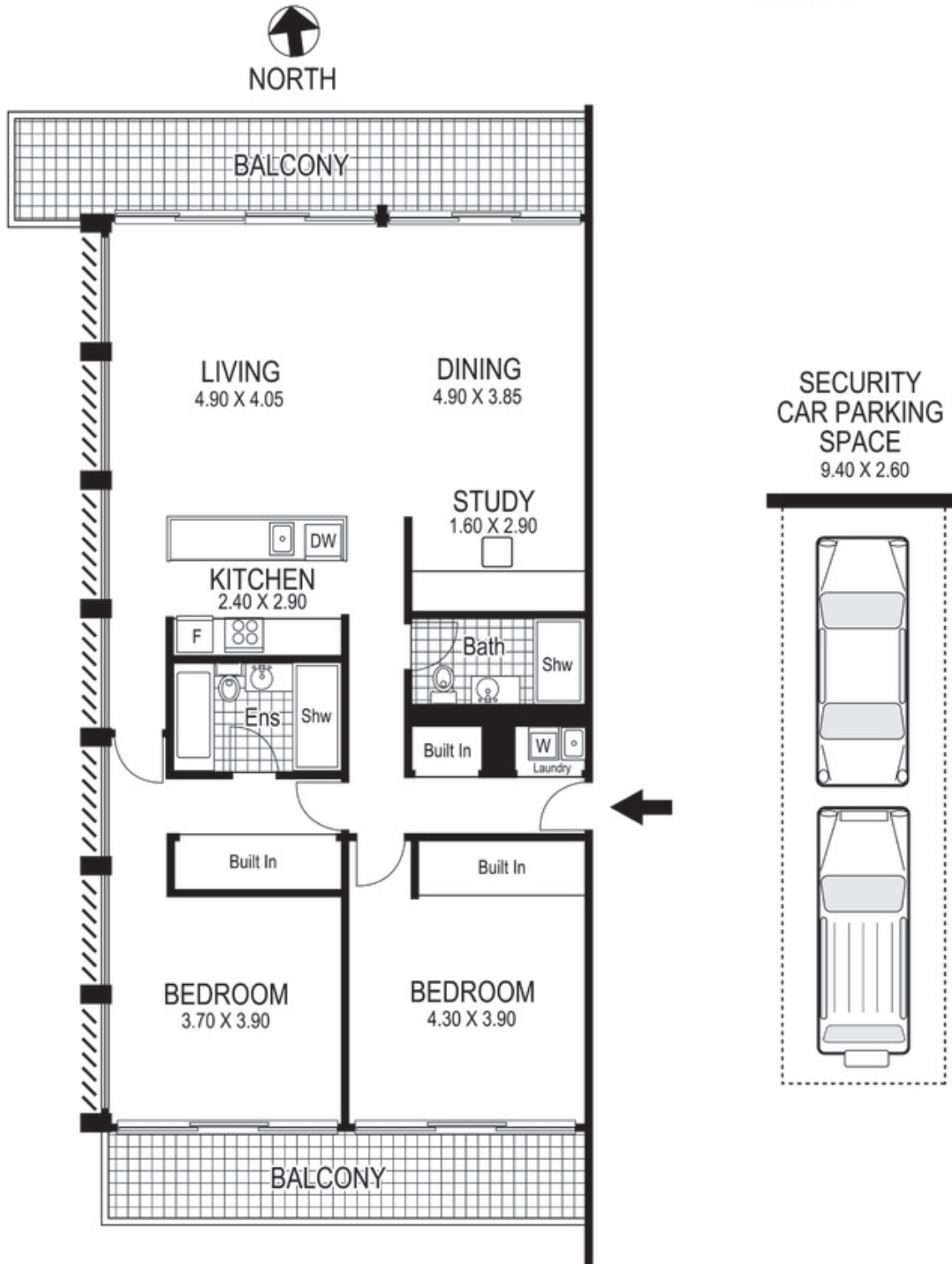
Greg McKinley 0412 044 822

Andrew Hoggett 0412 208 614

Luke McDonnell 0418 844 110

**Proudly Richardson&Wrench**

Richardson & Wrench Elizabeth Bay / Potts Point  
02 8356 2700



1501 / 3 Kings Cross Road  
RUSHCUTTERS BAY  
"ALTAIR"

Plans shown are for presentation purposes only and are not part of any legal document or title and are subject to errors, omissions inaccuracies and they should not be used as the sole and/or accurate reference for purchasing decision. Interested parties should make their own inquiries using other sources supplied. Dimensions in length and width are approximate. Illustration by Raoul Isidro 0411128500

Every precaution has been taken to establish accuracy of the information in this brochure but does not constitute any representation by the vendor or agent.