



## 519/357 Glenmore Road PADDINGTON, NSW

2 bed | 2 bath | 1 car

**R&W**

Offering a prized alternative to a Paddington terrace house, this spacious 2 storey apartment occupies a premium top floor position in Whites, one of the Easts most successful warehouse conversions. Opening to 2 large private balconies with a sunny aspect and treetop views, this boutique designer apartment offers exclusivity, security & generous townhouse style open plan living.

- \* Large open plan living/dining areas feature soaring ceilings
- \* Granite, Smeg gas oversized kitchen with breakfast bar
- \* Superbly maintained pet friendly block with indoor po...

[rwebay.com.au/3475105](https://rwebay.com.au/3475105)

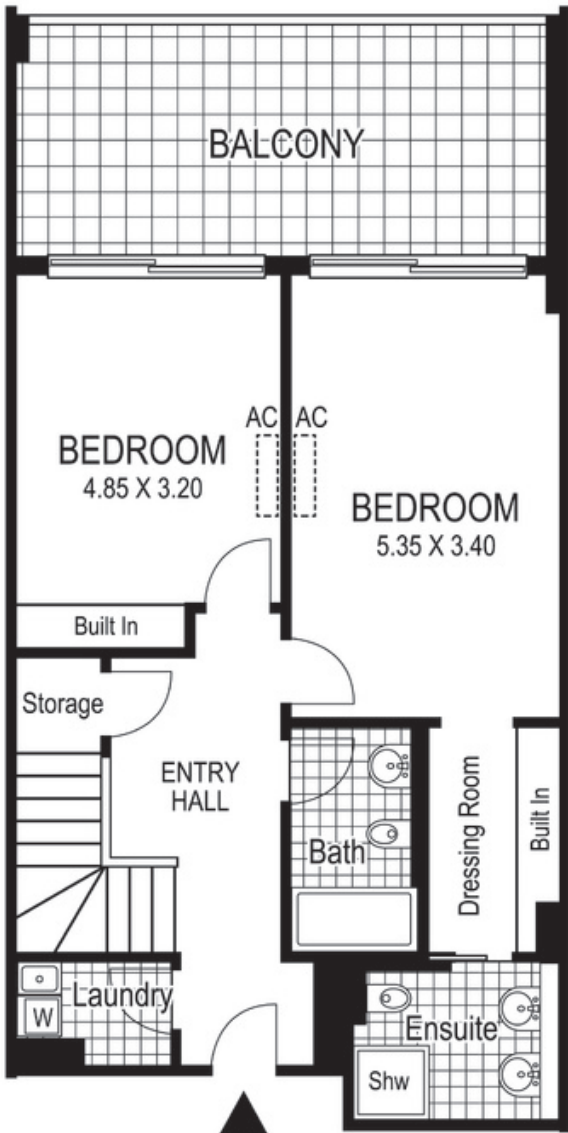
Andrew Hoggett 0412 208 614

Jason Boon 0418 671 494

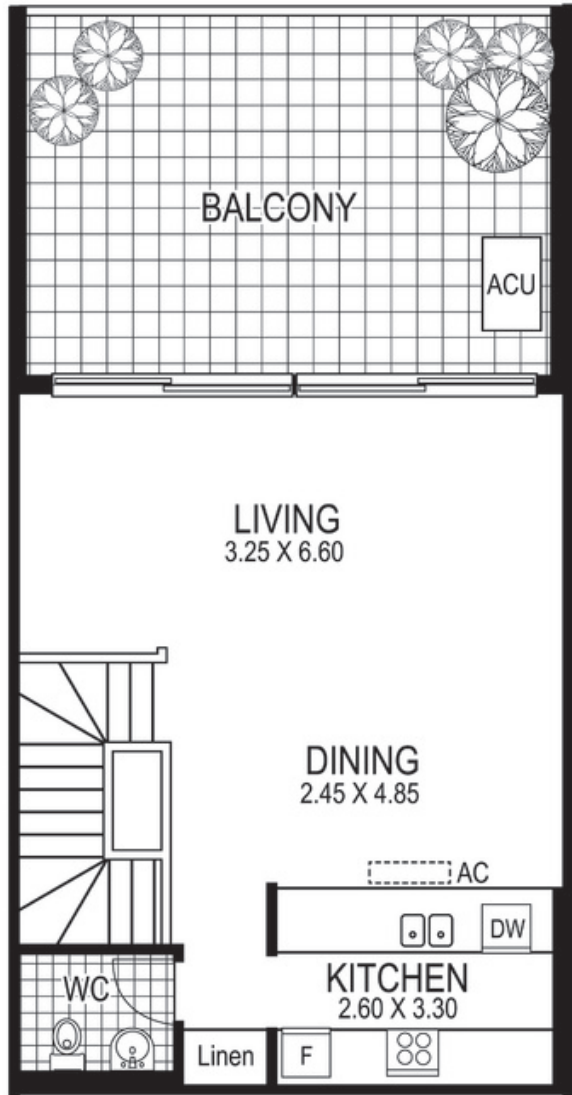
Geoff Cox 0418 231 004

**Proudly Richardson&Wrench**

Richardson & Wrench Elizabeth Bay / Potts Point  
02 8356 2700



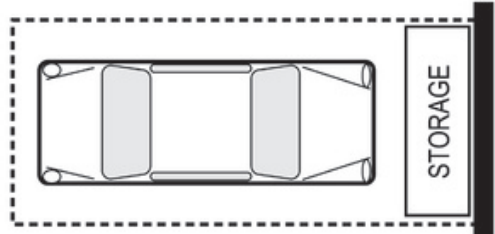
Entry Level



Upper Level



SECURITY  
CAR PARKING  
SPACE  
5.45 X 2.30



# 519 / 357 Glenmore Road PADDINGTON "WHITES"

Plans shown are for presentation purposes only and are not part of any legal document or title and are subject to errors, omissions inaccuracies and they should not be used as the sole and/or accurate reference for purchasing decision. Interested parties should make their own inquiries using other sources supplied. Dimensions in length and width are approximate. Illustration by Raoul Isidro 0411128500

Every precaution has been taken to establish accuracy of the information in this brochure but does not constitute any representation by the vendor or agent.