



12/7 Ithaca Road ELIZABETH BAY, NSW

2 bed | 2 bath

R&W

rwebay.com.au/3502851

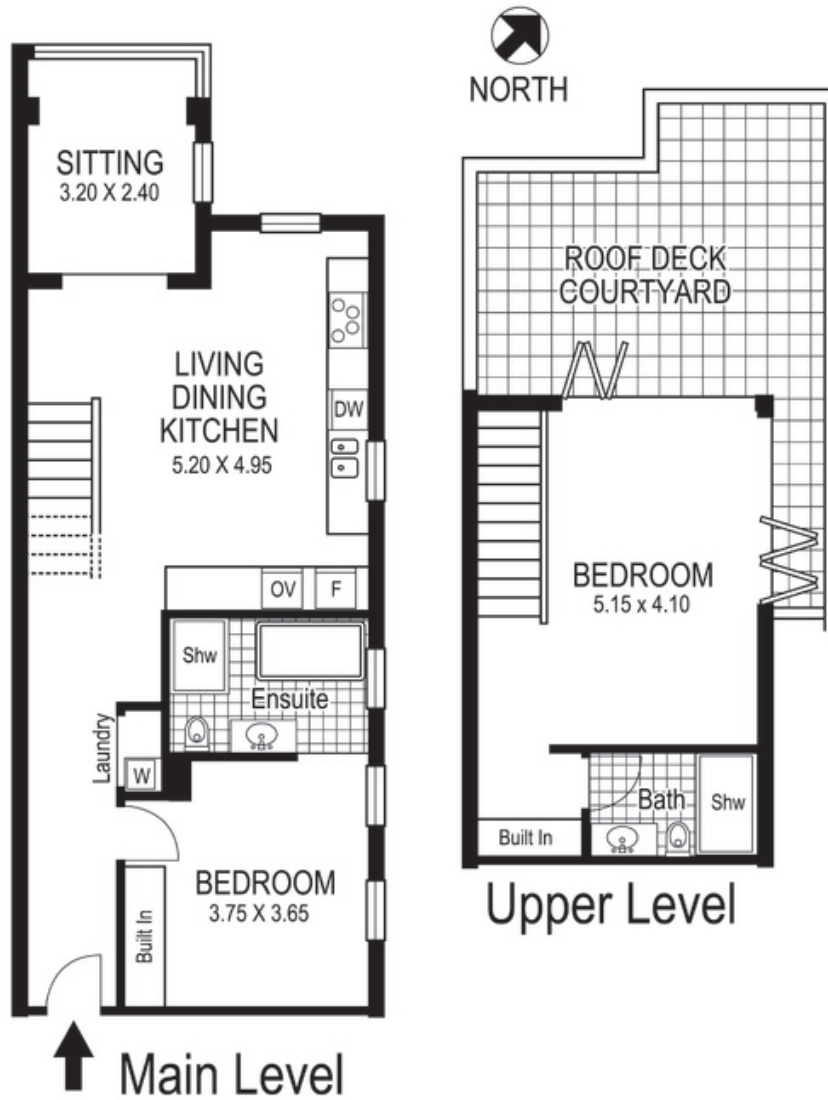
Jason Boon 0418 671 494

Geoff Cox 0418 231 004

Proudly Richardson&Wrench

Richardson & Wrench Elizabeth Bay / Potts Point
02 8356 2700

- * No expense spared on a boutique renovation
- * Set just one building back from harbour
- * Overlooking the famed "Boomerang" estate
- * Superb views to the NW from living area and upstairs terrace
- * Kitchen with highest quality Miele appliances + gas connections
- * Steam + convection ovens, integrated dishwasher + fridge
- * Discreet internal laundry on lower level



12 / 7 Ithaca Road
ELIZABETH BAY
"ALABAMA"

Plans shown are for presentation purposes only and are not part of any legal document or title and are subject to errors, omissions inaccuracies and they should not be used as the sole and/or accurate reference for purchasing decision. Interested parties should make their own inquiries using other sources supplied. Dimensions in length and width are approximate. Illustration by Raoul Isidro 0411128500