



## 2/1 Henderson Road ALEXANDRIA, NSW

1 bed | 1 bath

**R&W**

- \* Split-level design with Spotted Gum floorboards
- \* Built-in cushioned seating and fold-down table
- \* Stylish cooking appliances with fridge included
- \* Slide-out queen bed for when it's time to sleep
- \* Fully tiled bathroom, internal laundry facilities
- \* Wall-mounted TV, built-in robe, further storage
- \* Stroll to Alexandria Park and cosmopolitan cafes
- \* Walk to Redfern train station and express city bus
- \* Central to Inner West, Eastern Suburbs and CBD

[rwebay.com.au/3509300](https://rwebay.com.au/3509300)

Luke McDonnell 0418 844 110

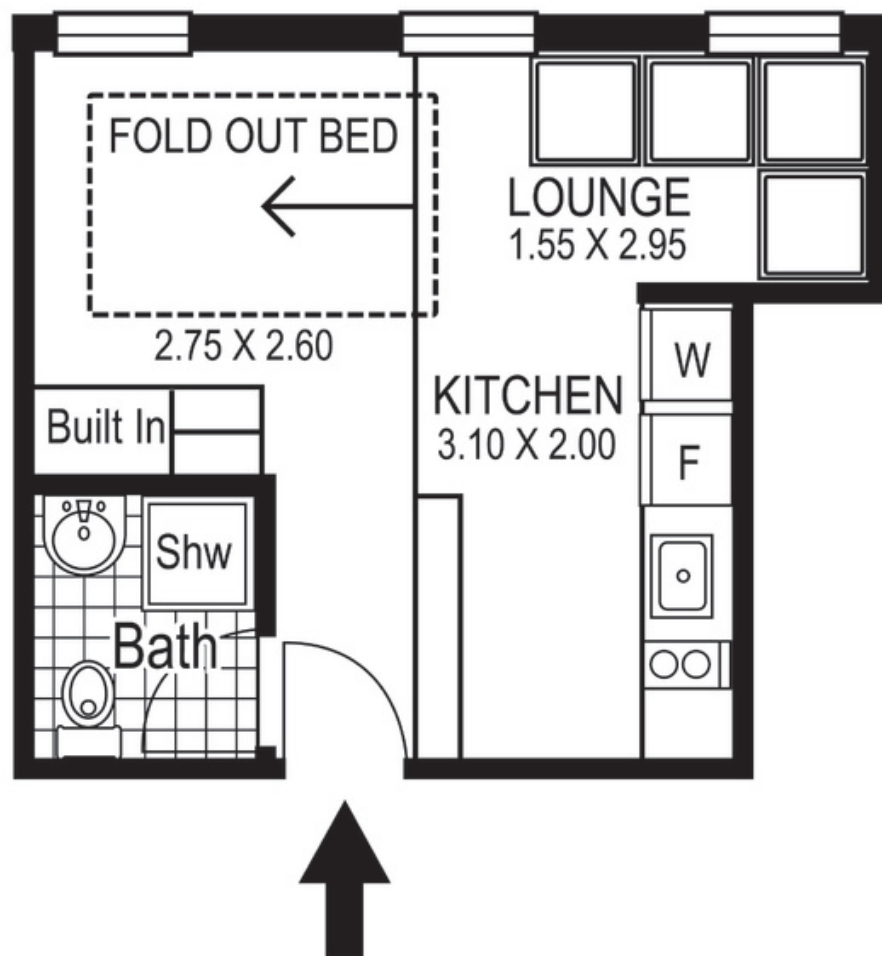
**Proudly Richardson&Wrench**

Richardson & Wrench Elizabeth Bay / Potts Point  
02 8356 2700

Contact:  
Luke McDonnell  
0418 844 110

**R&W**

Elizabeth Bay / Potts Point  
8356 2700



2 / 1 Henderson Road  
ALEXANDRIA

Plans shown are for presentation purposes only and are not part of any legal document or title and are subject to errors, omissions inaccuracies and they should not be used as the sole and/or accurate reference for purchasing decision. Interested parties should make their own inquiries using other sources supplied. Dimensions in length and width are approximate. Illustration by Raoul Isidro 0411128500

Every precaution has been taken to establish accuracy of the information in this brochure but does not constitute any representation by the vendor or agent.

**R&W**