



3/6 Evans Road ELIZABETH BAY, NSW

2 bed | 1 bath

R&W

- * Large flowing layout offering great flexibility
- * Pet friendly
- * Darlinghurst Public School catchment area
- * Ground floor apartment with house-like feel
- * Sunny paved courtyard plus private side passage access
- * Expansive main living space, French doors to courtyard
- * Bright master bedroom with charming leafy outlook, fan
- * Carpeted second bedroom, handy extra TV room space
- * Polished floorboards in living room, kitchen, master bedroom

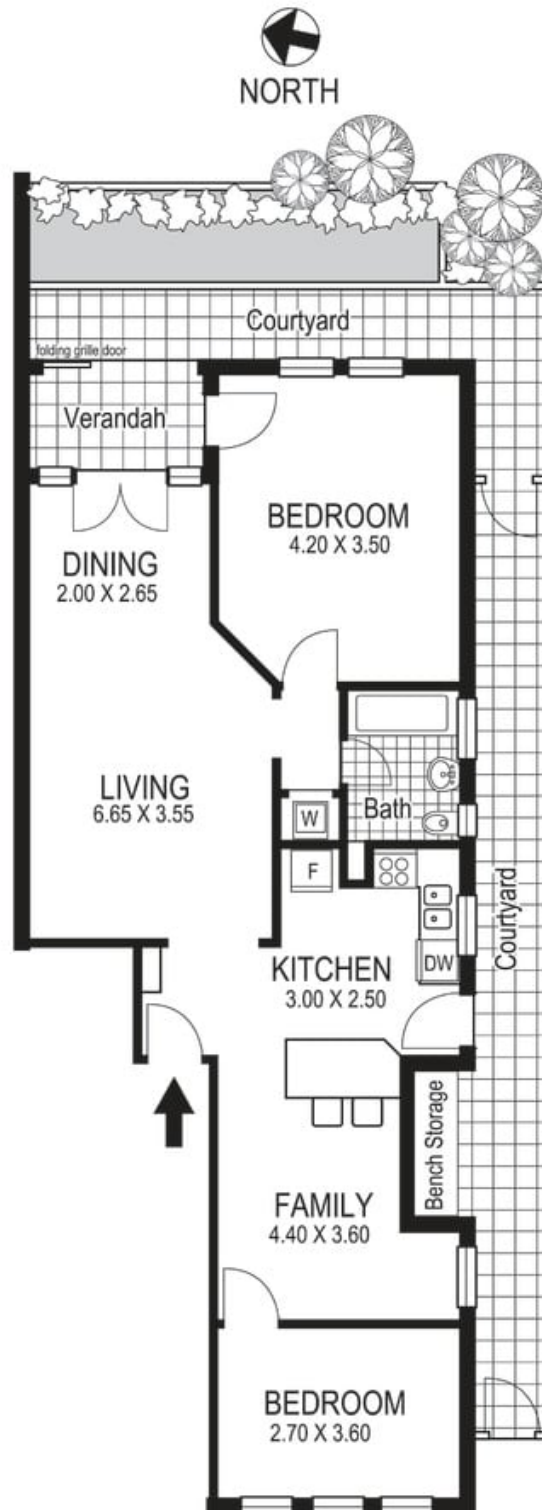
rwebay.com.au/3580098

Geoff Cox 0418 231 004

Jason Boon 0418 671 494

Proudly Richardson&Wrench

Richardson & Wrench Elizabeth Bay / Potts Point
02 8356 2700



3 / 6 Evans Road ELIZABETH BAY "KYOTO"

Plans shown are for presentation purposes only and are not part of any legal document or title and are subject to errors, omissions inaccuracies and they should not be used as the sole and/or accurate reference for purchasing decision. Interested parties should make their own inquiries using other sources supplied. Dimensions in length and width are approximate. Illustration by Raoul Isidro 0411128500

Every precaution has been taken to establish accuracy of the information in this brochure but does not constitute any representation by the vendor or agent.