



32/4 Macleay Street POTTS POINT, NSW

2 bed | 1 bath

This apartment's spacious layout is set well above the sought-after Paris end of Macleay Street with a scenic village-green aspect from all living areas. Quiet and private on the 3rd floor of the tightly held FOUR Macleay Street, a landmark classic c.1938 security block with grand Art Deco influences.

- * Leafy aspect from all windows and water glimpses
- * Direct lift access from grand entry hall
- * Traditional entrance hall with built-in cupboards & bookshelves
- * Separate kitchen with gas and heaps of storage/bench ...

R&W

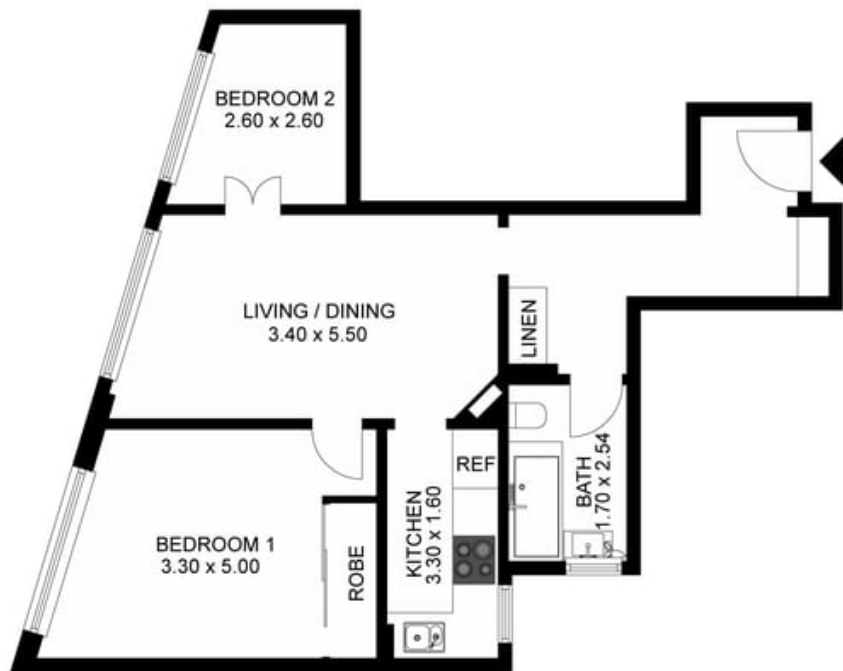
rwebay.com.au/3622775

Angelo Bouras 0401 658 653

Penny Timothy 0418 546 500

Proudly Richardson&Wrench

Richardson & Wrench Elizabeth Bay / Potts Point
02 8356 2700



32/4 MACLEAY ST, POTTS POINT, SYDNEY

Plans shown are for presentation purposes only and are not part of any legal document or title and are subject to errors, omissions, inaccuracies and they should not be used as the sole and/or accurate reference for purchasing decision. Interested parties should make their own inquiries using other sources supplied. Dimensions in length and width are approximate.

Every precaution has been taken to establish accuracy of the information in this brochure but does not constitute any representation by the vendor or agent.

