



15/4 Ithaca Road ELIZABETH BAY, NSW

2 bed | 1 bath

R&W

rwebay.com.au/3645669

Jason Boon 0418 671 494

Geoff Cox 0418 231 004

Proudly Richardson&Wrench

Richardson & Wrench Elizabeth Bay / Potts Point
02 8356 2700

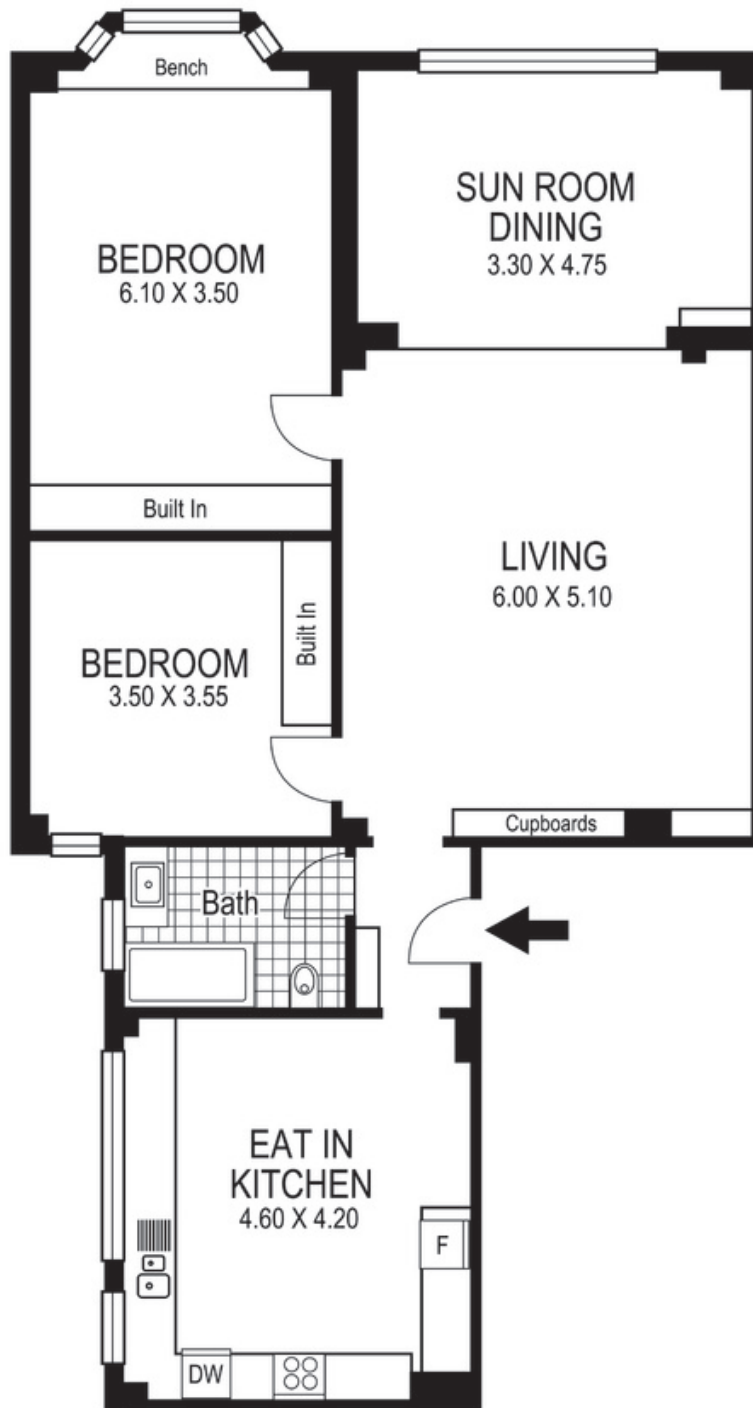
- * Grand 1930s Art Deco building with wood-panelled foyer
- * Immaculately presented home, quiet and expansive
- * Carpeted living area, oversized and spacious
- * Extensive b/ins in living room
- * Main bedroom with b/ins, bay window alcove, sitting area
- * Kitchen with Smeg, Bosch appliances, parquet floors
- * Pantry space with auto internal light
- * Bright track lighting in several rooms



NORTH

R&W

Elizabeth Bay / Potts Point
8356 2700



15 / 4 Ithaca Road
 ELIZABETH BAY
 "ITHACA"

Plans shown are for presentation purposes only and are not part of any legal document or title and are subject to errors, omissions inaccuracies and they should not be used as the sole and/or accurate reference for purchasing decision. Interested parties should make their own inquiries using other sources supplied. Dimensions in length and width are approximate. Illustration by Raoul Isidro 0411128500

Every precaution has been taken to establish accuracy of the information in this brochure but does not constitute any representation by the vendor or agent.

R&W