



## 21/108 Elizabeth Bay Road ELIZABETH BAY, NSW

1 bed | 1 bath | 1 car

**R&W**

- ? Well maintained building with impeccable grounds
- ? Exclusive harbourside enclave, idyllic water's edge lifestyle
- ? Uninterrupted, never-to-be-built out 270 deg. harbour views
- ? Main balcony with electronic sun & wind control awning
- ? 2nd balcony off bedroom with electronic awning
- ? Entry via private use 3rd balcony
- ? Sliding door partition to bedroom allowing great versatility
- ? Bedroom with b/ins + walk-through robe to bathroom
- ? Modern bathroom with shower, dual entry

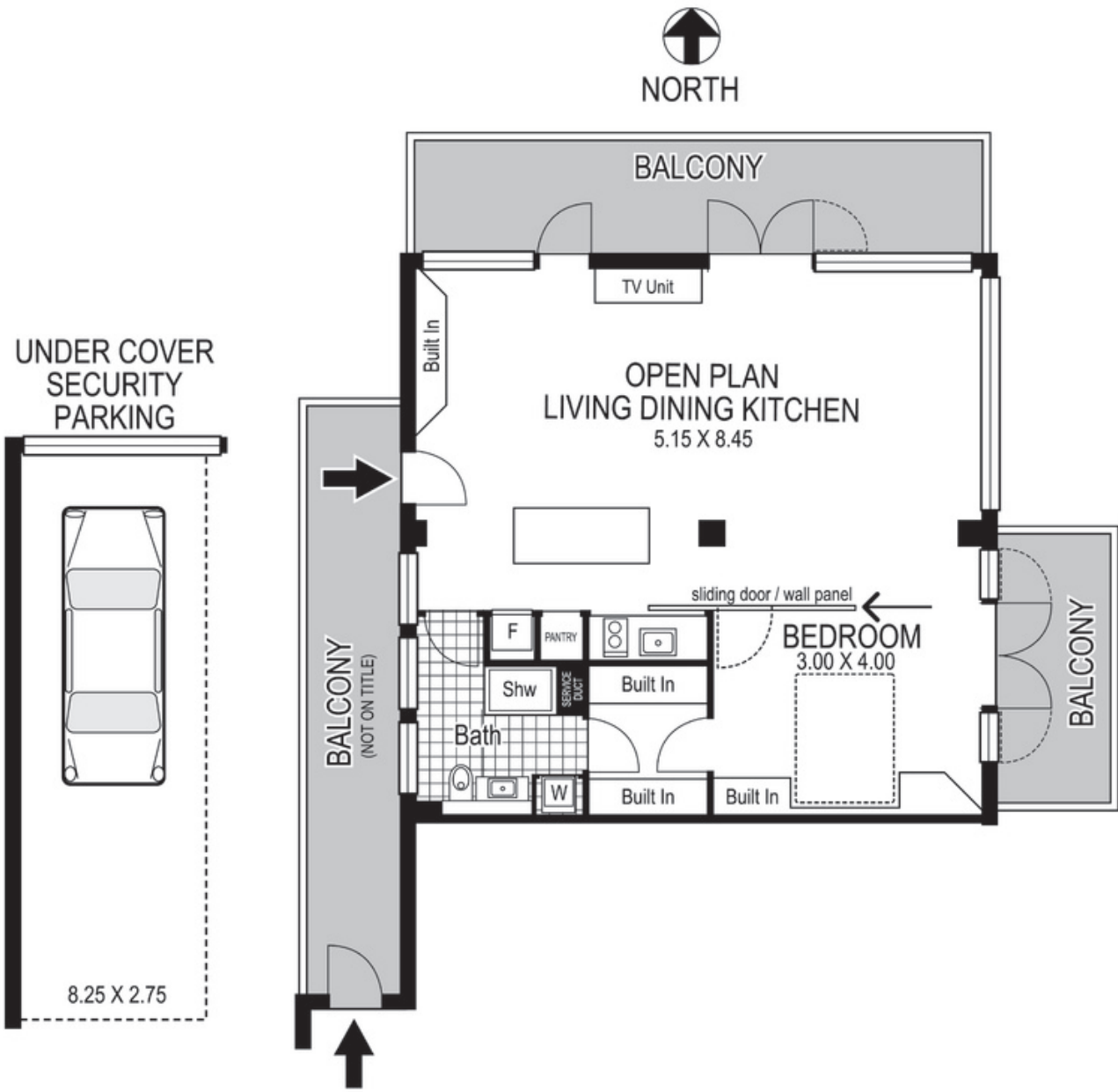
[rwebay.com.au/3650901](http://rwebay.com.au/3650901)

Jason Boon 0418 671 494

Geoff Cox 0418 231 004

**Proudly Richardson&Wrench**

Richardson & Wrench Elizabeth Bay / Potts Point  
02 8356 2700



# 21 / 108 Elizabeth Bay Road ELIZABETH BAY

Plans shown are for presentation purposes only and are not part of any legal document or title and are subject to errors, omissions inaccuracies and they should not be used as the sole and/or accurate reference for purchasing decision. Interested parties should make their own inquiries using other sources supplied. Dimensions in length and width are approximate. Illustration by Raoul Isidro 0411128500

Every precaution has been taken to establish accuracy of the information in this brochure but does not constitute any representation by the vendor or agent.